

Locate well correctly

IDAHO BUREAU OF MINES & GEOLOGY
University of Idaho
Moscow, Idaho

WELL LOG

STATE NO. Kootenai - 2

Company Coeur d'Alene Oil & Dev. Co. Address _____

Lessor or Tract _____ Field Rathdrum State Idaho

Well No. _____ Sec. 31 T. 52N R. 4W Meridian Boise County Kootenai

Location NW 1/4 sec 31

Give description from known permanent object or monument

Elevation _____ Date started _____ Date completed _____

Purpose of well _____

Oil or Gas Sands or Zones

Give rate of flow, pressure, type of oil or gas.

Water Sands or Zones

Give rate of flow, pressure, type of water, etc.

Casing Record

Casing used (sizes, type, depth landed.) Casing left in hole (size, position, etc.)

Cementing Record

Shooting Record

Amount of cement used, position, etc. Position, cleaned to depth, reason

Plugging Record

Driller or contractor Name and Address: _____

Type of Drill _____

Date _____ Signed _____

No other information from W.W. Staley Title _____
Compilation

1928-06

Oil Drilling
in
North Idaho

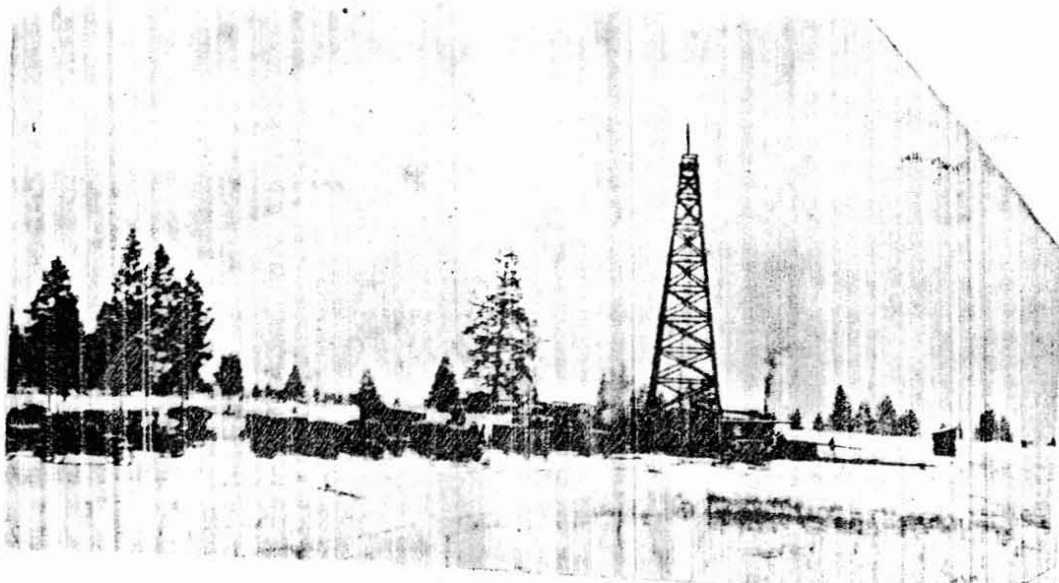
Art Randall
July 28, 2006

1928-06

Coeur d'Alene Oil and Dev. Co.
No. 1 Rathdrum

Spad-1926
P. S. A. - 1926
elev. 2,200'

Drilled near Bull park
in Rathdrum



MUSEUM NI



MUSEUM NI

1974-0
1928-0
1928-0
1923-0

Oil Drilling
in
North Idaho

Art Randall
July 28, 2006

Oil Wells

Year	Company	Lease	Loc.	Spad	Abd.	Prod.
1923-02	Lapwai	Geo King Farm	35-36N-4W	1923	?	1040
1974-03	Craigmont	Gasco No. 1	12-33N-1W	1924	?	150
1925-06	Cda Oil/Dev. Co.	1	31-52N-4W		?	?
1925-05	Cda Oil/Dev. Co.	1 L.C. Worst	12-51N-4W	2/28/1928	?	1950
	Peoples Gas/Oil Co.	1 Ramsey	50902-52N-4W		?	1700-1800
1925-06	Cda Oil/Dev. Co.	1 Rathdrum	near Rathdrum	1926	1946	?