



Standard Cement Bond Log
V.D.L.

FILE NO. CBL/NPL-2
COMPANY AMERICAN QUASAR
WELL COOK 26-1
FIELD WILD CAT

COUNTY TETON STATE IDAHO
LOCATION

SEC 26 TWP 5N RGE 4WE
Permanent Datum G.L.
Log Measured from KB
Drilling Measured from KB
Date 2-28-78
Run No. THREE
Depth-Driller J.S.D.
Depth-Logger J.S.D.
Bottom Logged Int. 8' 00"
Type of Log SURFACE

Emulsion 6.112
CF 6.091
Casing Record Surface Protection
Size 3 1/2
Type of Cement
Type of Cement
Type of Cement

Fluid Level
Max. Temp. Day F. 14.0SH
Tool Screen No. 1
Standard Size 3.5
Logging Speed 3.0 FPM
RVA Log Type
T.C.
Spem. String
Trace of Log
Type of Cement
Density of Fluid
Type of Cement
Type of Cement

Volume of Additive
Retarder
Slurry Wt.
Preceding Fluid
Vol. Preceding Fluid
Breakdown Pressure
Max. Pres. - Stage 1
Final Max. Pressure
Time Brkdn. (hr.-date)
Pumping Stopped
Pres. Released
Started Bond Log
Finished Bond Log

Witnessed by M.H.T.E.

REMARKS

SQUEEZE JOB DETAIL

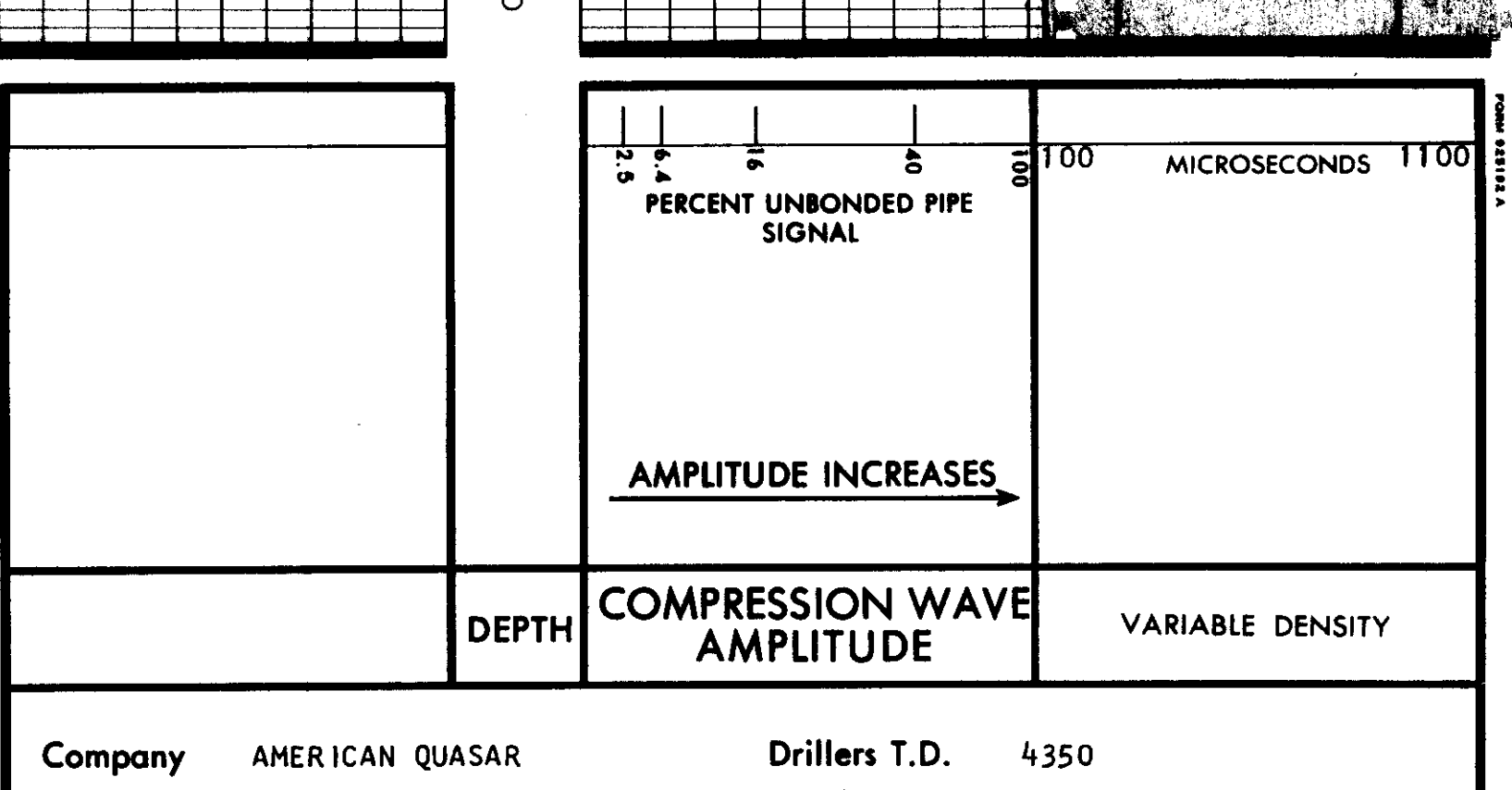
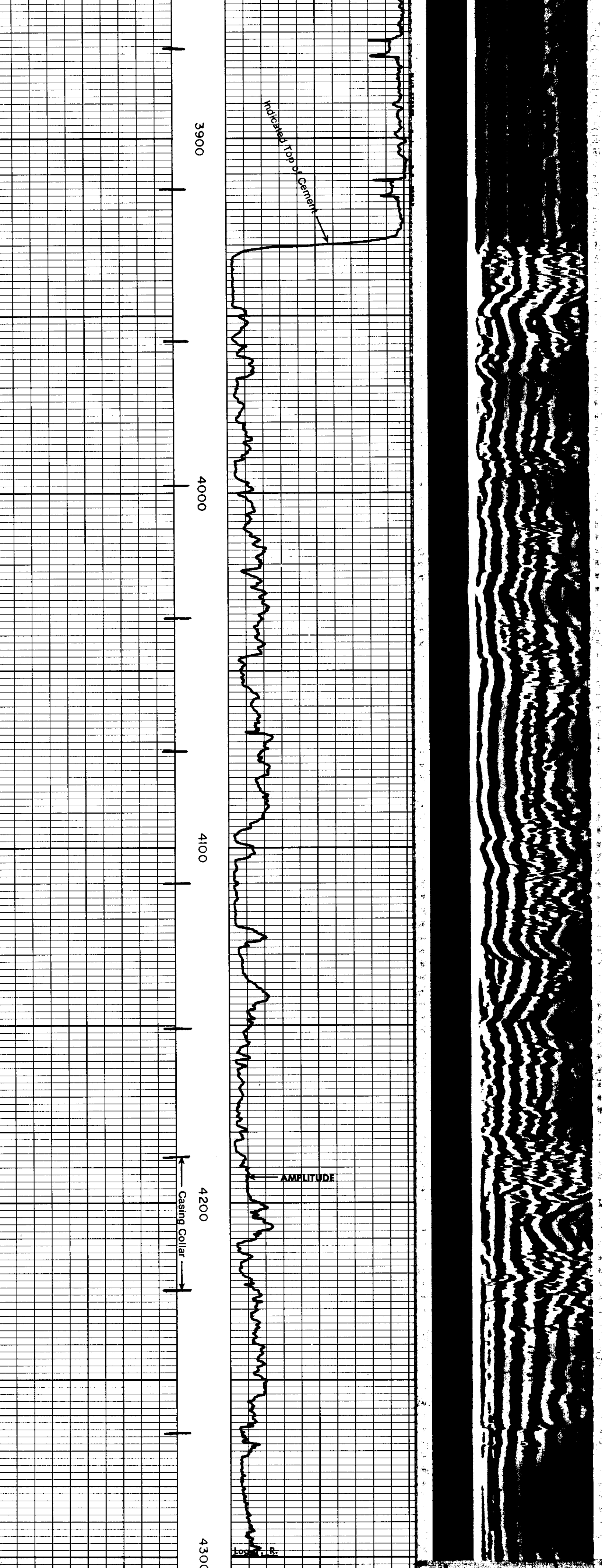
Squeeze No.	1	2	3	4
Date				
Depth Interval				
Type Cement				
Vol. of Cement				
Additive				
% Additive				
Retarder				
% Retarder				
Slurry Wt.				
Preceding Fluid				
Vol. Preceding Fluid				
Breakdown Pressure				
Max. Pres. - Stage 1				
Final Max. Pressure				
Time Brkdn. (hr.-date)				
Pumping Stopped				
Pres. Released				
Started Bond Log				
Finished Bond Log				

SEQUENCE OF CEMENT BOND LOGS

Log run following:	CBL Run	Squeeze No.
Surface Casing Cement		1
Protection Casing Cement		2
Production Casing Cement		3
Liner Cement		4

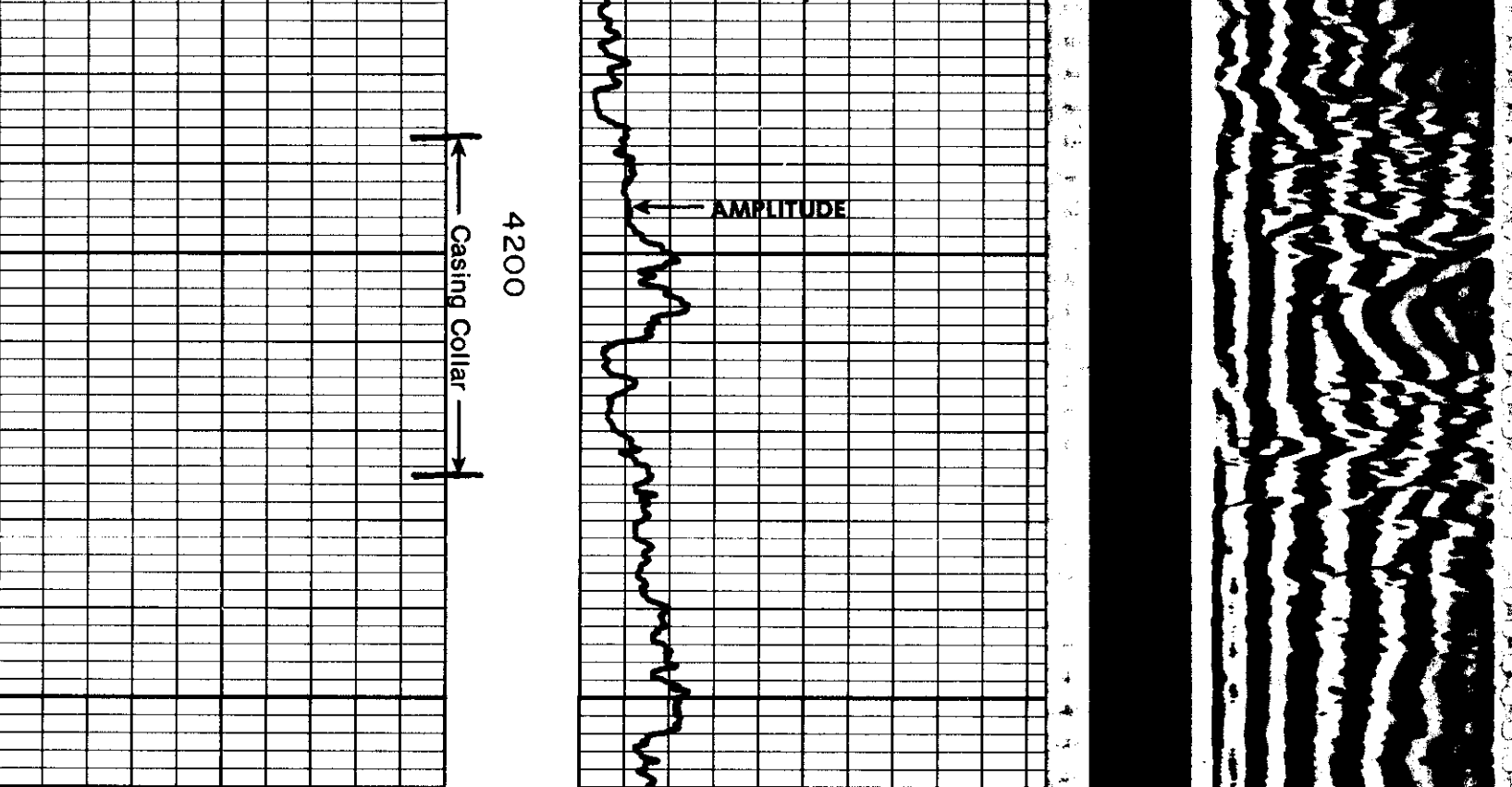
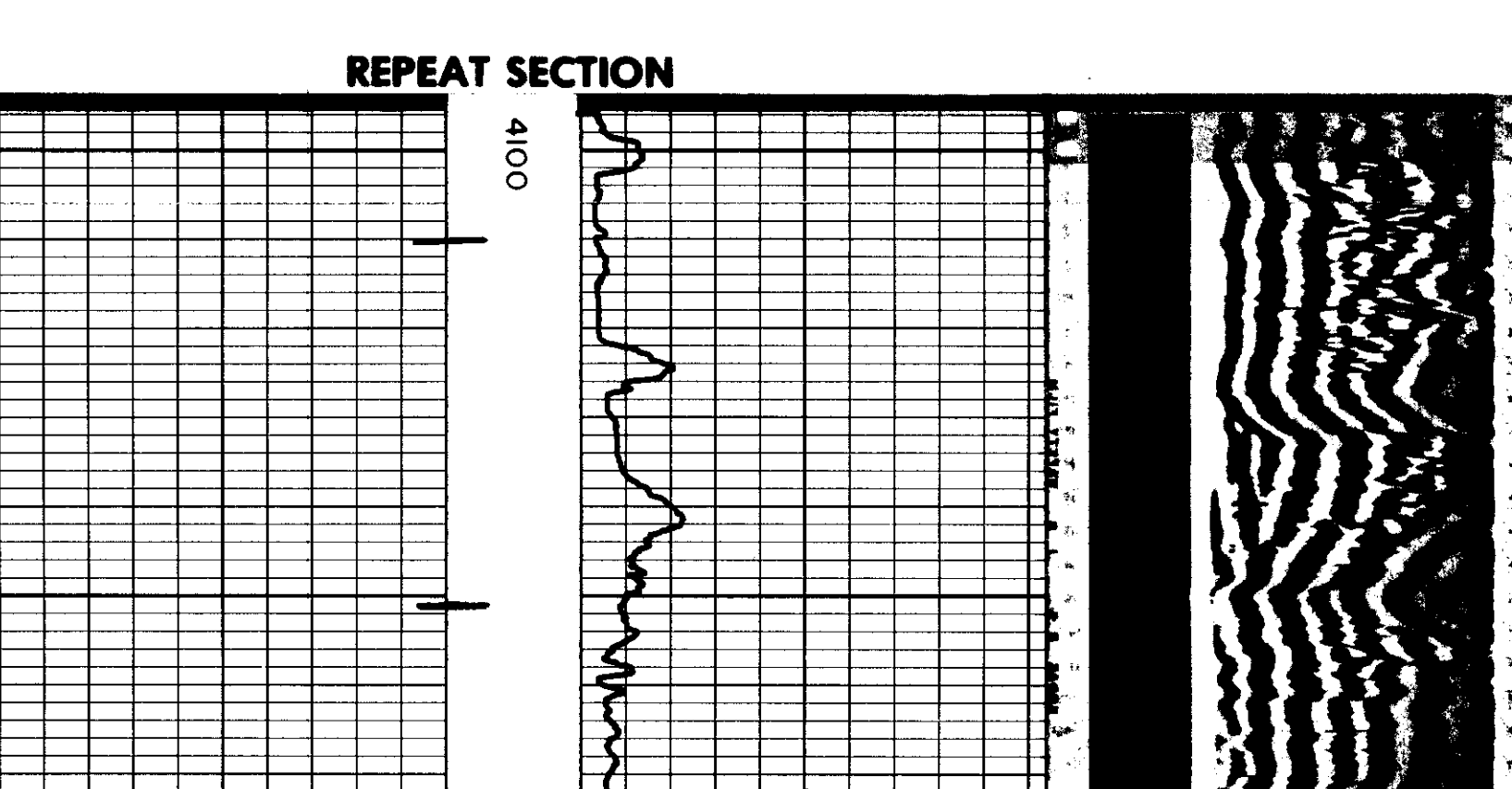
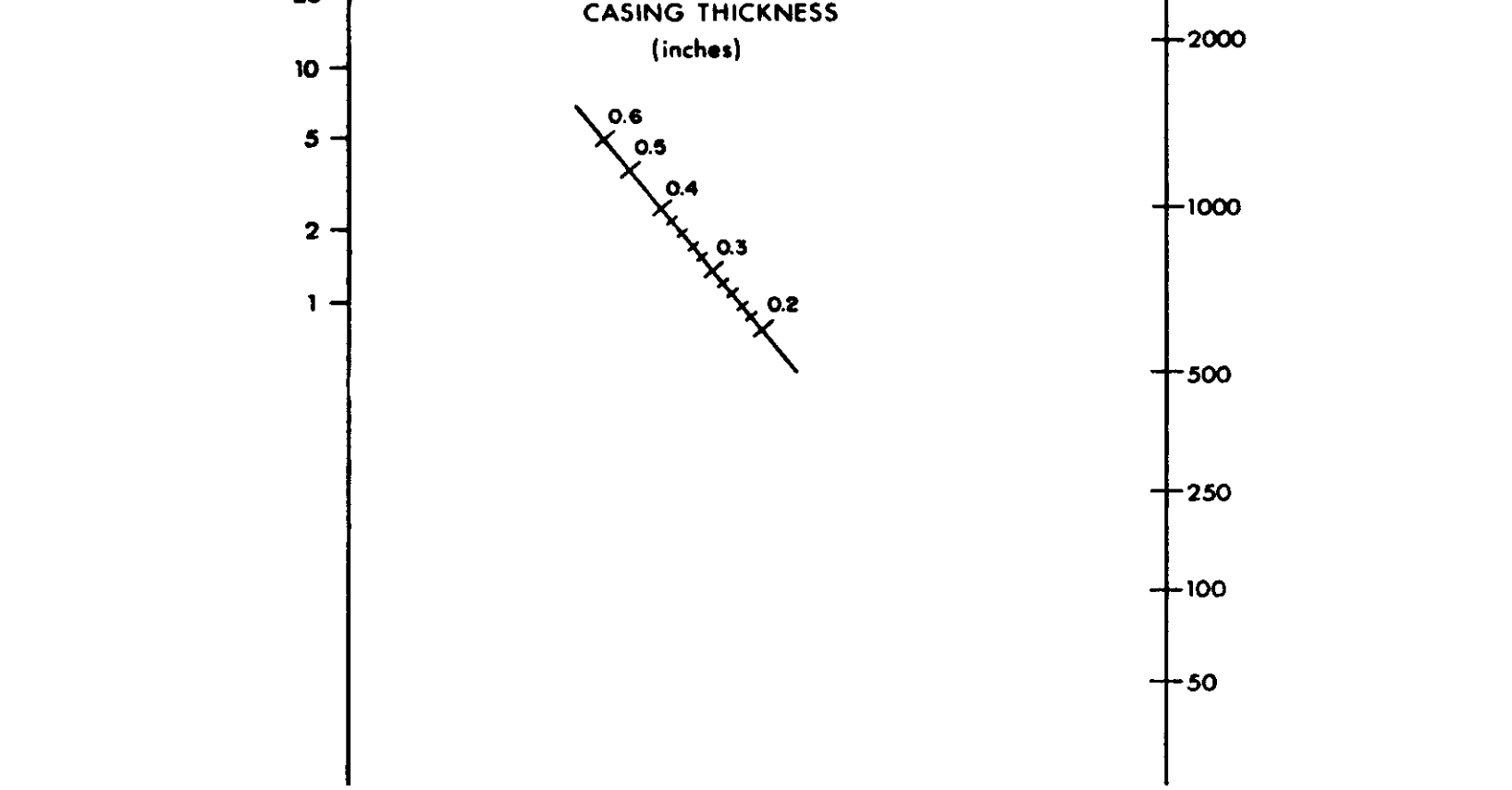
AVERAGE WELL DRIFT

Direction	From	To
North		
South		
East		
West		



Company AMERICAN QUASAR
Well COOK 26-1
Field WILD CAT
County TETON
State IDAHO

Drillers T.D. 4350
Log F.R. 4300
Log T.D. ---
Elevations:
K.B. 6112 D.F. --- G.L. 6091



Division of Dresser Industries, Inc.