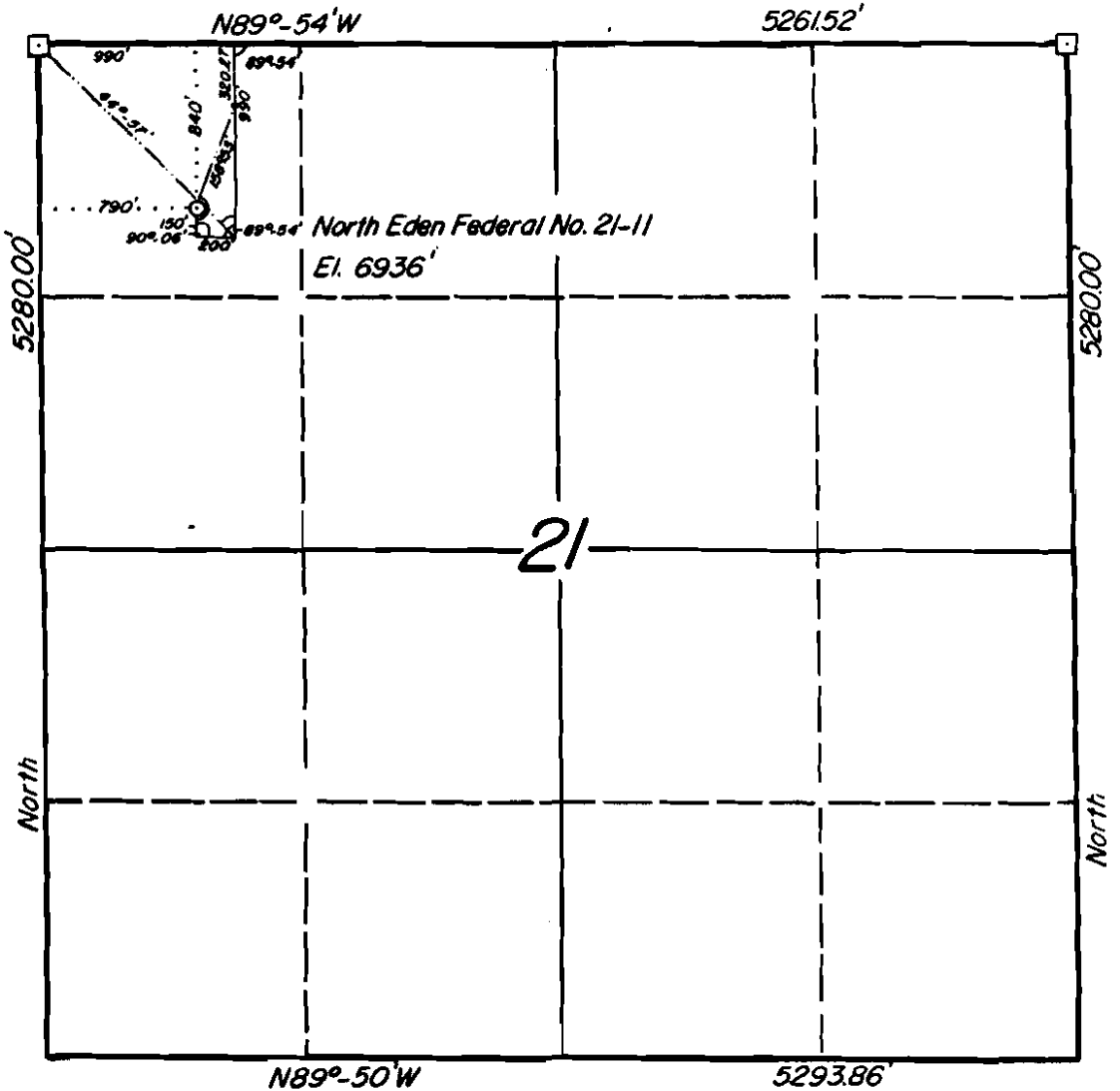


— T16S R45E —



□ indicates a Certified Land Corner Recordation Certificate filed.

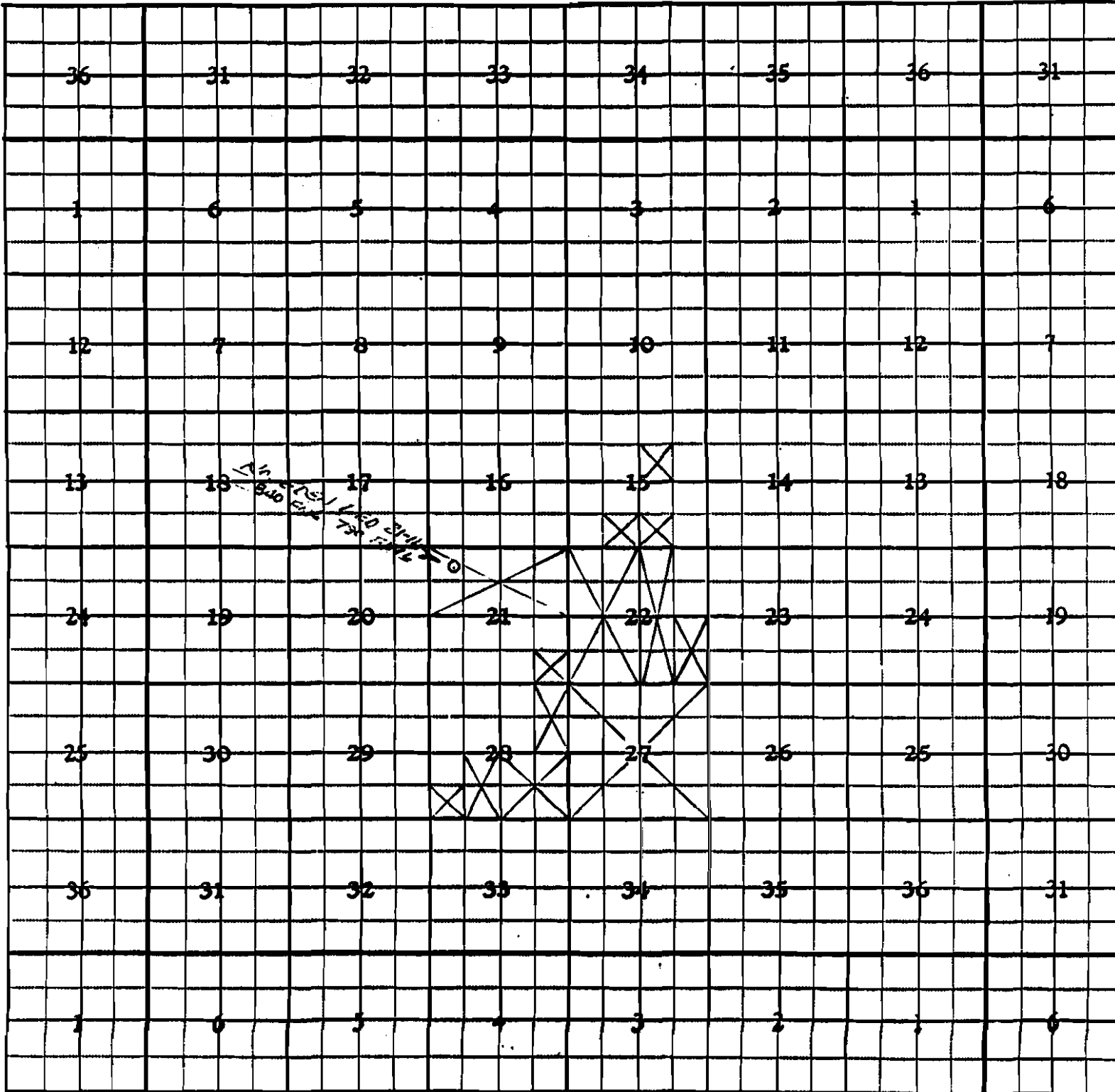
Elevation is based upon top of knoll in the NE1/4NW1/4 of Section 21,
 T16S, R45E = 6899' from the USGS PEGRAM CREEK, IDAHO-UTAH
 Quadrangle Map.

FEDERAL LEASE I-7039

FORM NO. 121-A
FRAMING PUBLISHING CO.

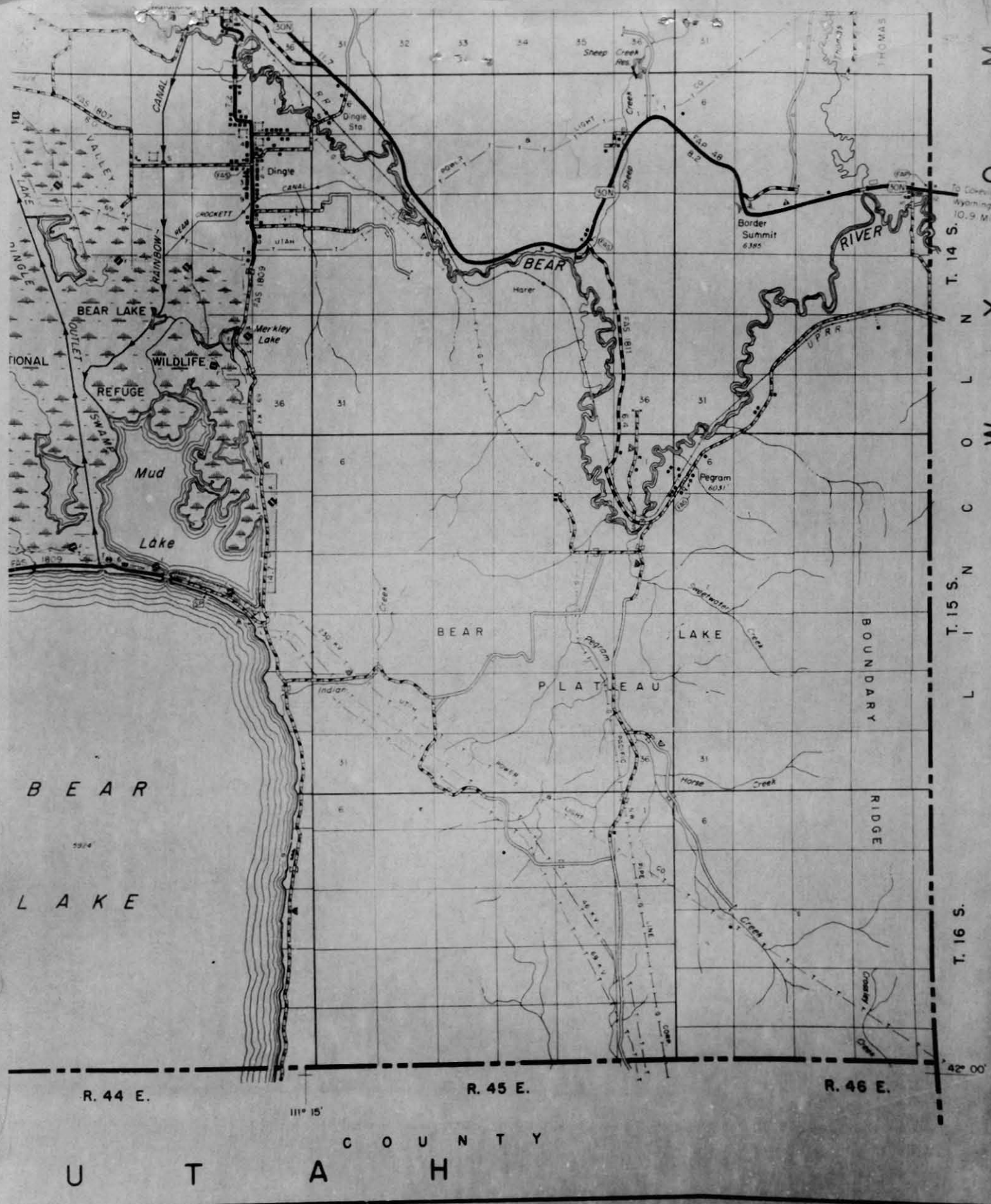
2040 AC.

Township 16 SOUTH North Range 4.5 EAST West BEAR LAKE CO. Principal-Meridian



LOC. 840' ENL 790' ENL

SCALE 1" = 1 MILE



T. 14 S.
T. 15 S.
T. 16 S.

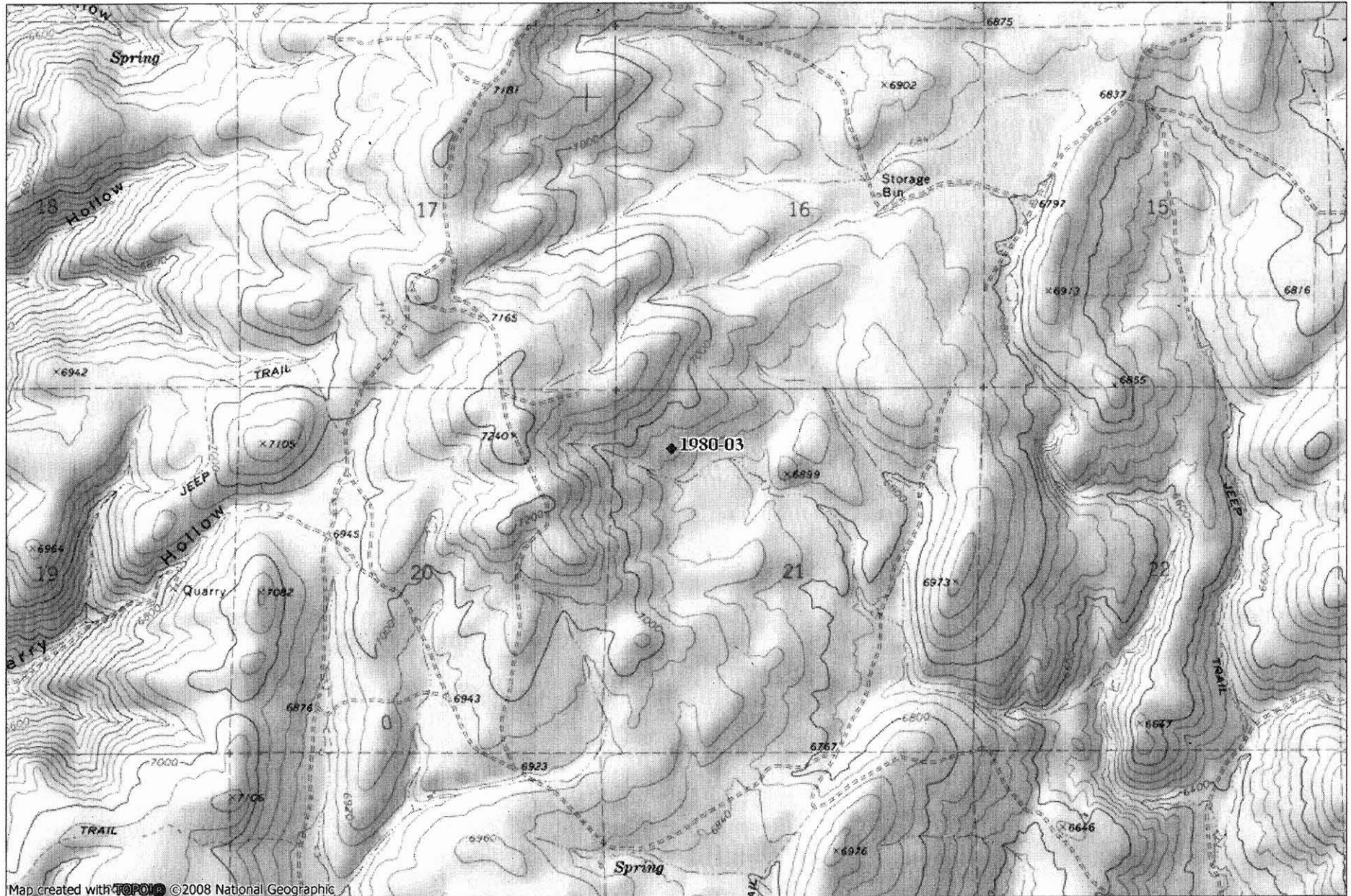
R. 44 E. R. 45 E. R. 46 E.

U T A H
C O U N T Y

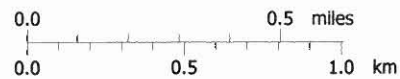
42° 00'

1980-03 North Eden - Federal No. 21-11

TOPO! map printed on 05/20/10 from "Oil_and_Gas_Locations.tpo"



Map created with TOPO! ©2008 National Geographic



TN* MN
12°
05/20/10