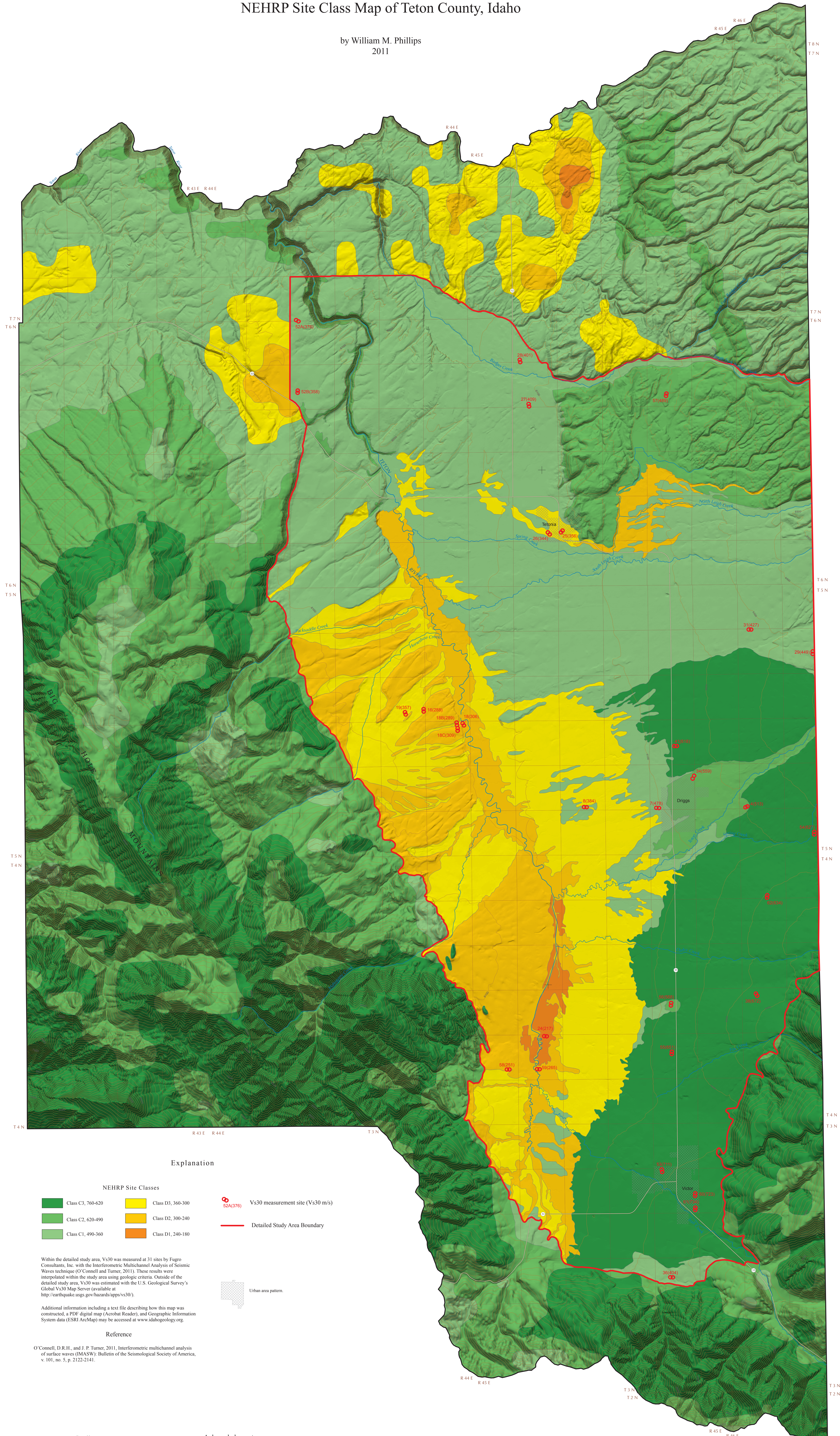


NEHRP Site Class Map of Teton County, Idaho

by William M. Phillips  
2011



Explanation

NEHRP Site Classes

	Class C3, 760-620		Class D3, 360-300		Vs30 measurement site (Vs30 m/s)
	Class C2, 620-490		Class D2, 300-240		Detailed Study Area Boundary
	Class C1, 490-360		Class D1, 240-180		Urban area pattern

Within the detailed study area, Vs30 was measured at 31 sites by Fugro Consultants, Inc. with the Interferometric Multichannel Analysis of Seismic Waves technique (O'Connell and Turner, 2011). These results were interpolated within the study area using geologic criteria. Outside of the detailed study area, Vs30 was estimated with the U.S. Geological Survey's Global Vs30 Map Server (available at <http://earthquake.usgs.gov/hazards/apps/vs30/>).

Additional information including a text file describing how this map was constructed, a PDF digital map (Acrobat Reader), and Geographic Information System data (ESRI ArcMap) may be accessed at [www.idahogeology.org](http://www.idahogeology.org).

Reference

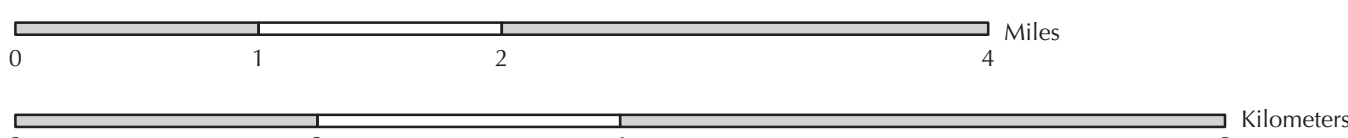
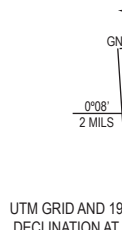
O'Connell, D.R.H., and J. P. Turner, 2011. Interferometric multichannel analysis of surface waves (IMASW). Bulletin of the Seismological Society of America, v. 101, no. 5, p. 2122-2141.

Credits

Shaded elevation from 10 m DEM.  
Projection: Idaho coordinate system, east zone (Transverse Mercator, 1827 North American Datum).  
Public Land Survey System (PLSS) Sections in Idaho: U.S. Bureau of Land Management, Idaho State Office, Geographic Services.  
Highways: Idaho Transportation Department.  
Hydrography: Idaho Department of Water Resources.  
Urban Areas: U.S. Department of Commerce, Bureau of the Census, Geography Division.  
Digital cartography by Collette Gantenbein, Idaho Geological Survey.  
Reviewed by John D. Kauffman.  
Version 12.2011.13

Acknowledgments

Funded under Task Order No. 001-FY-2011 from the Idaho Bureau of Homeland Security and by the Idaho Geological Survey. Vs30 measurements were conducted by Jamey Turner and Dan O'Connell (Fugro Consultants, Inc.) with assistance in the field by Jacob Willis and Scott Wood. Greg Adams (Teton County) assisted with access to private property. We thank the following land managers and property owners for permission to measure Vs30: Idaho Fish and Game, Teton County, City of Driggs, City of Victor, City of Teton, Teton County School District, Teton Regional Land Trust, Todd Carter and Teri Hill (University of Idaho Teton Experiment Station), Sean Czarcraft (Headwaters Club), Anthony Sney (Huntsman Springs), Charlie Woodward, NOIS Teton Valley, and the Church of Latter Day Saints.



1: 50,000  
Contour Interval 100 feet

