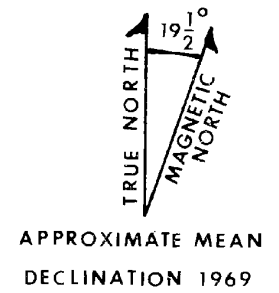
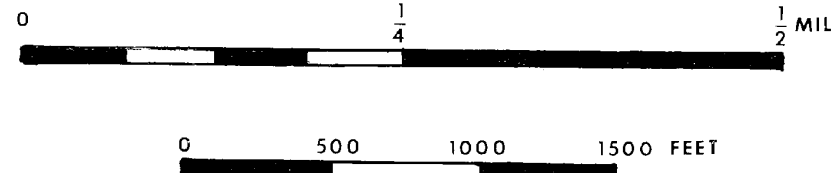


Base taken from a 7 1/2 minute USGS quadrangle enlarged three times.
 Control by USGS, USC&GS and USFS.
 Topography by photographic methods from aerial photographs taken 1964. Field checked by USGS in 1967.
 Geology by Glen Kirkpatrick, 1973.

PLATE 1

GEOLOGIC MAP OF THE BIG CREEK AREA, VALLEY AND IDAHO COUNTIES, IDAHO

SCALE 1:8,000

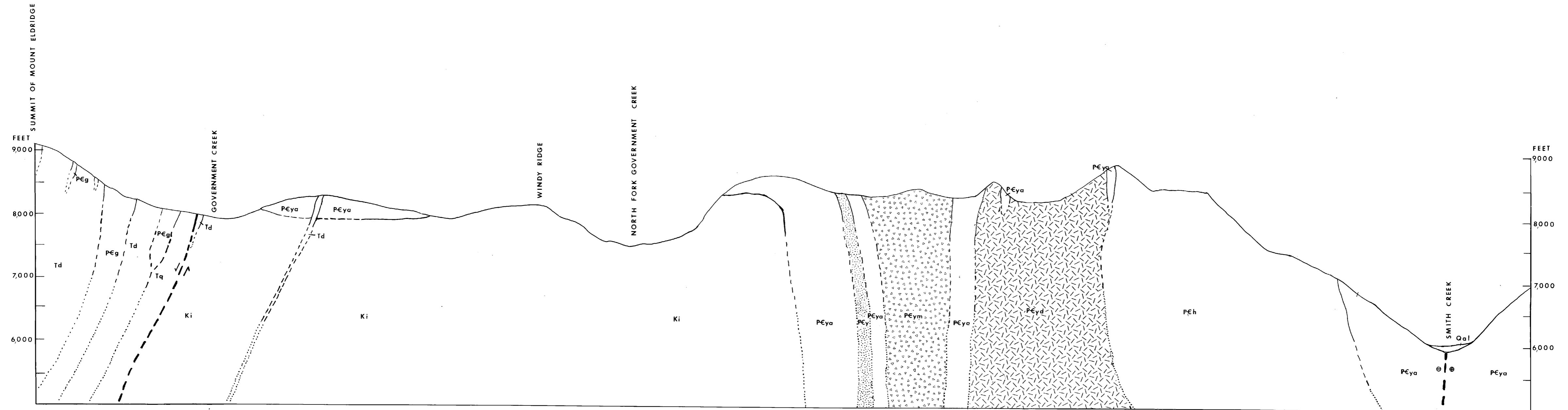


EXPLANATION

<p>UPPER OLIGOCENE OR LOWER MIOCENE</p> <p>EOCENE</p> <p>CRETACEOUS</p>	<p>QUATERNARY</p> <p>SMITH CREEK-PROFILE GAP DIKE SWARM</p> <p>CHALLIS VOLCANICS</p> <p>GRANODIORITE</p>	<p>COVERED AREAS</p> <p>Qal, alluvium.</p> <p>Ogl, glacial drift.</p> <p>Ql, talus and other covered areas.</p> <p>Td</p> <p>Tq</p> <p>Tv</p> <p>Ki</p>	<p>QUARTZITE, GNEISS, AND SCHIST</p> <p>PEG, mica schist and quartz-feldspathic rocks.</p> <p>PEg, quartzite and quartz-feldspathic rocks.</p> <p>PCh</p> <p>HOODOO QUARTZITE</p> <p>PEh, massive, white quartzite.</p> <p>PEym, PEyv, PEy, yellowjacket formation.</p> <p>PEy, crystallized limestone.</p> <p>PEym, hornblende schist (metavolcanic) and volcanic breccia.</p> <p>PEyo, argillite, siltite, impure fine-grained quartzite, and biotite-staurolite phyllonites and schists.</p> <p>PEyd, dolomites and diopside, tremolite, scapolite schists.</p>	<p>CONTACT</p> <p>Dashed where approximately located, dotted where concealed.</p> <p>FAULT</p> <p>Dashed where approximately located.</p> <p>INCLINED VERTICAL OVERTURNED</p> <p>Strike dip of beds.</p> <p>ANTICLINE SYNCLINE</p> <p>Trend of major fold axes.</p> <p>INCLINED VERTICAL</p> <p>Strike and dip of foliation.</p> <p>MEASURED SECTION</p>
---	--	---	--	--

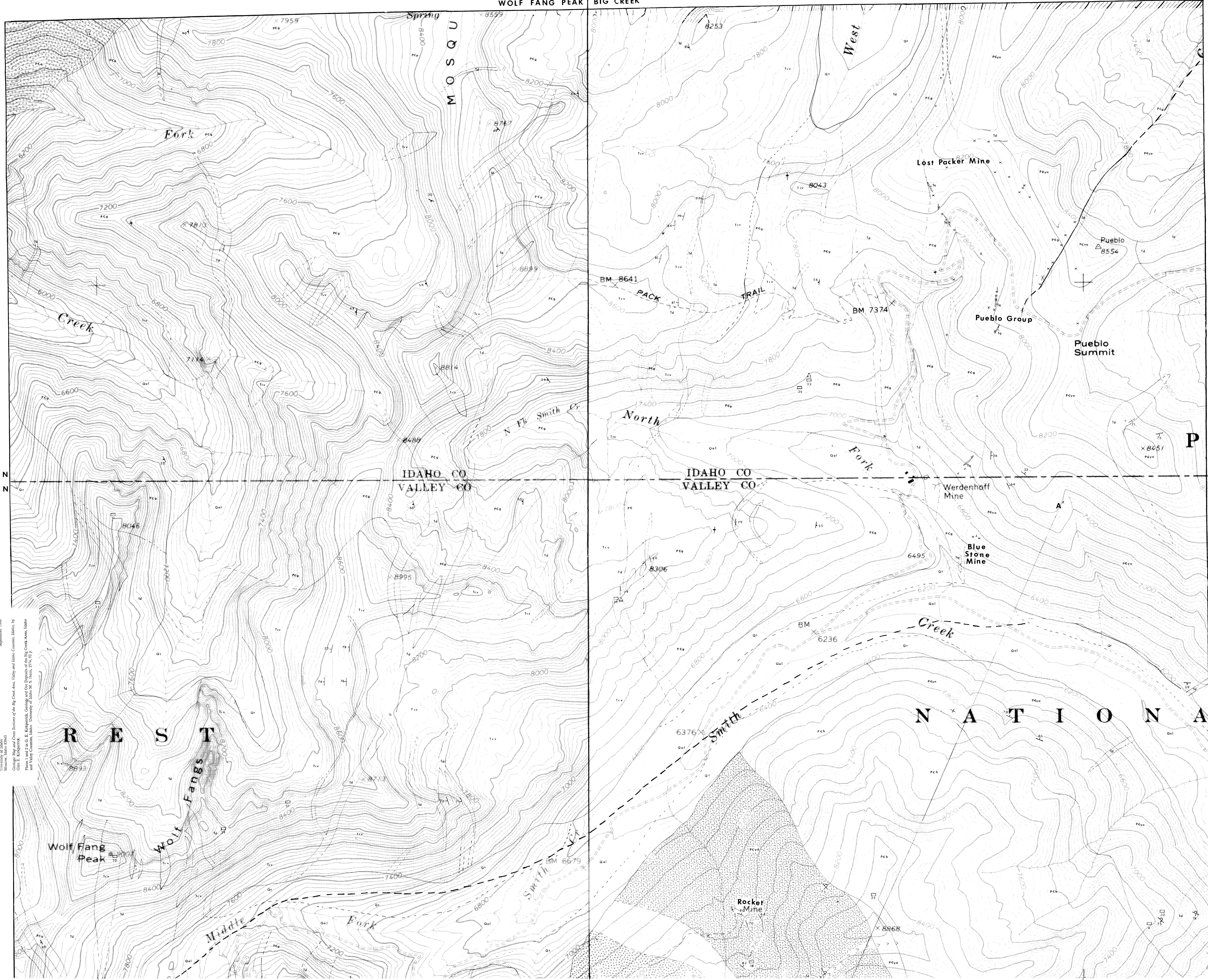
PLATE 2

GEOLOGIC CROSS SECTION OF THE BIG CREEK AREA



A SCALE 1:1,600
FOR EXPLANATION OF UNITS AND LOCATION OF SECTION SEE PLATE 1

A'



Topographic Survey
University of Idaho
Moscow, Idaho 83843

Geologic Map and Cross Sections of the Big Creek Area, Early and Middle Counties, Idaho, by
Glen E. Kerpner
and
John C. E. Johnson
University of Idaho, Moscow, Idaho, 1974, 92 p.

T 22 N
T 21 N

N A T I O N A L