

**PRELIMINARY RECONNAISSANCE REPORT**  
(Use a continuation sheet for additional information, if necessary)

1. SAMPLE INFORMATION IN THE FIELD

Sample	TYPE		SENSITIVITY
	(No., channel, grade, etc.)	(Strong, moderate, weak)	
Flh33	jig concentrate	moderate	
Flh34	" "	"	
Flh35	" "	weak	
Flh36	" "	weak	
Flh37	" "	moderate	

2. State Idaho  
 County Idaho County  
 District Elk City  
 Claim/Mine ---  
 Nearest Town Elk City and Fall City  
 Sec. \_\_\_\_\_ Twp. \_\_\_\_\_ Range \_\_\_\_\_

3. Owner of claim, mine or land Type Mining Company, Mullin Mines, Incorporated  
 Address Golden, Idaho

4. Previous Work (Maps, Reports, History of prospect, etc.)  
Geology and Ore Deposits of Elk City, Orogrande, Buffalo Hump, and Tensile Districts, Idaho County, U. S. G. S. Circular 9, 1934,  
Reconnaissance of Placer Mining District in Idaho County, U. S. Bureau of Mines Information Circular 7023.  
Geology and Gold Resources of North Central Idaho, Idaho Bureau of Mines and Geology Bulletin 7, 1924.

5. Type Geiger counter Kl Tronics Model SM 3  
 Background on .02 Scale C/M or dial reading of 2 divisions

6. Description of Examination:

	TYPE OF MINERAL	
	Surface	Underground
Overall		
Stream		X
Surface		X
Underground		

Results: The highest reading indicated was from a picked sample which read about 4.0 mr/hr. From the jig concentrates the average reading was 1.5 mr/hr. The fine concentrates gave a reading of about 0.5 mr/hr.

7. Mineralogical Association:

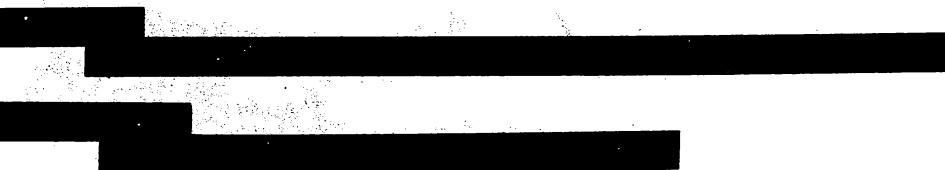
Ilmenite, magnetite, rutile, limonite, pink garnet, brannerite, betafite, davidite, and euxenite. Quartz, gold, and silver.

8. Geologic Environment:

Placer deposits which are rich in heavy minerals. These heavy minerals consist mostly of ilmenite, magnetite, rutile and radioactive uranium minerals. These uranium minerals supposedly come from pegmatites which are abundant in that area.

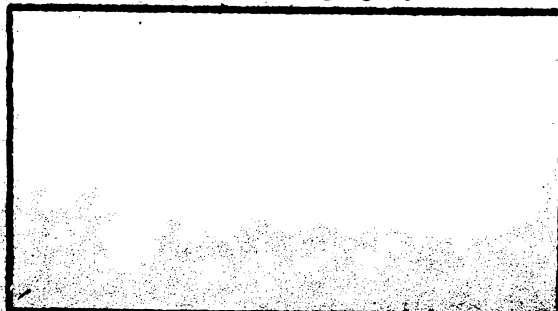
9. Type of Deposits:

Placer deposits.



12. Geologic Sketch Map showing sample location:

not warranted  included in final geologic report



13. Examined by: Donald G. Barrett and  
Donald L. Hatfield

14. Date of examination: July 17 & 18, 1952

15. Has a proof of certificate fees been distributed? No

16. Supplementary Report:  not necessary

