

71ST ANNUAL REPORT  
OF THE  
MINING INDUSTRY  
OF IDAHO  
FOR  
1973 - 1974  
(JAN. 1, 1973 - JULY 30, 1974)



W. CARL GRINER . . . . .	INSPECTOR OF MINES
WILLIAM R. BONDURANT . . . . .	TECHNICAL AIDE
MILTON D. FIFE . . . . .	DEPUTY
WILLIAM H. SPEAR . . . . .	DEPUTY
C. L. CARD, JR. . . . .	DEPUTY
VERNILE BREAZEAL . . . . .	DEPUTY
MARLENE YORK . . . . .	SECRETARY



71ST ANNUAL REPORT  
OF THE  
MINING INDUSTRY  
OF IDAHO  
FOR  
1973 - 1974  
(JAN. 1, 1973 - JULY 30, 1974)



W. CARL GRINER . . . . . INSPECTOR OF MINES  
WILLIAM R. BONDURANT . . . . . TECHNICAL AIDE  
MILTON D. FIFE . . . . . DEPUTY  
WILLIAM H. SPEAR . . . . . DEPUTY  
C. L. CARD, JR. . . . . DEPUTY  
VERNILE BREAZEAL . . . . . DEPUTY  
MARLENE YORK . . . . . SECRETARY



TO HIS EXCELLENCY,  
THE HONORABLE CECIL D. ANDRUS  
Governor of Idaho

SIR:

With the permission of the Director of Administration under Section 59-601 and Section 47-111, Idaho Code, I have the honor to transmit herewith the annual report of the Inspector of Mines for the period January 1, 1973 through June 30, 1974.

Respectfully submitted,

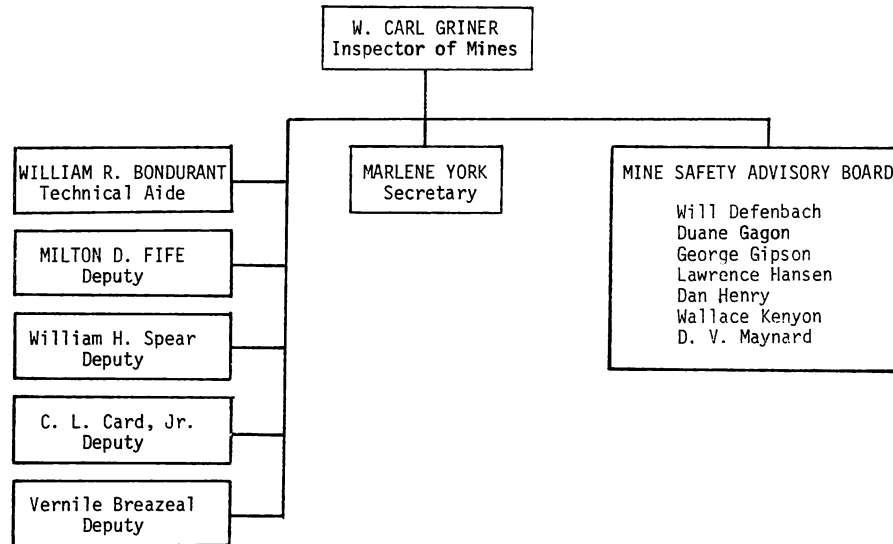
W. CARL GRINER  
Inspector of Mines



T A B L E O F C O N T E N T S

	Page
Letter of Transmittal . . . . .	ii
Organizational Chart	iv
Introduction	v
The Mineral Industry of Idaho in 1973	1
Plotting With Images From Space . . . . .	4
Fatalities	6
Sand and Gravel-Commercial . . . . .	14
Sand and Gravel-Non Commercial . . . . .	25
Stone-Commercial . . . . .	36
Stone-Non Commercial . . . . .	38
Gold, Silver, Copper, Lead and Zinc . . . . .	39
Placers . . . . .	79
Barite, Cement, Clay . . . . .	81
Fluorspar, Garnet, Gemstones	82
Graphite, Gypsum, Kyanite, Lime . . .	83
Mica, Peat, Perlite, Phosphate .	84
Pumice . . . . .	85
Antimony, Cobalt . . . . .	87
Iron Ore, Mercury, Molybdenum . . . . .	88
Thorium . . . . .	89
Tungsten . . . . .	90
Uranium, Vanadium . . . . .	91
Smelters, Reduction Works and Processing Plants . . . . .	92
INDEX . . . . .	93

ORGANIZATIONAL CHART  
FOR THE OFFICE OF  
INSPECTOR OF MINES  
(Fiscal Year 1973-74)



## I N T R O D U C T I O N

The overall picture of mining in Idaho has been favorable this past 18 months. The majority of metal mining producers are enjoying profits exceeding those of 1972 due primarily to the continuous price increase of spot metals. The mining companies producing non-metallic commodities (phosphate) are also realizing the fruits of their investments in view of the world wide demand for fertilizer.

Idaho's mining prospectus looks exceptionally good with the potential of new industry in various parts of the State. In support of this outlook, we find Ethyl Corporation of Baton Rouge, Louisiana doing extensive exploratory work in the Kooskia area. The exploration could well prove out the belief that Idaho possesses one of the largest deposits of kyanite in the world.

In Custer County, Cyprus Mining Corporation has contracted out exploration work to Centennial Development and Longyear Drilling companies. The mining has prompted Cyprus to announce their future plans to erect a \$70,000,000 processing plant in the vicinity of Thompson Creek near Clayton, Idaho. The estimated reserves are in the neighborhood of 100,000,000 tons of molybdenum ore.

Other operations that have been activated or are in the process are as follows by counties:

### BEAR LAKE

Earth Sciences at Bloomington. Underground vanadium and phosphate operation.

### BLAINE

Hawaii National Corporation at Bellevue.

### BOISE

Missouri Mine at Pioneerville. An underground and open pit gold-silver mine now installing a 150 ton per day mill.

AMAX is core drilling at the Golden Age mine near Pioneerville.

Wolverine Development Company is exploring the Crown Point and Banner group, 14 miles northeast of Idaho City.

Comeback Mine has been reactivated. The mine is located near Pioneerville. Products sought are gold, silver, lead and zinc.

### CLARK

Rainbow Hill Mine north of Mud Lake.

CUSTER

MYKO, Inc. has reactivated the old Horseshoe Mine at Mackay.  
This is an underground silver and copper operation.

IDAHO

Wiseboy Mine in the Buffalo Hump area is being explored by a  
Canadian firm who is doing some core drilling.

LEMHI

Ramshorn Mine, an underground silver-lead mine and mill on  
Little Eight Mile Creek is being worked jointly by Monida  
Nuclear Fuel and Silver Mines, Inc.

Grandview Metals on Warm Springs Creek near Ketchum is milling  
copper ore from the Pope Shenon Mine (underground).

OWYHEE

Earth Resources of Golden, Colorado is doing exploration and  
development work in the Silver City-Delamar area.

Bluebird Mine near Oreana is being worked by Glen Pegram of  
Homedale. This is an underground silver operation.

SHOSHONE

Earth Resources is doing work on the Niagara Mining Claims.  
Diamond drilling is also being done on the Copper Hill  
claims.

Day Mines, Inc. is working toward the reopening of the  
Tamarack Mine near Gem. Primary products are lead, zinc  
and silver.

Alice-Con Project is being worked by J. Striker and P. Caron.  
Located near Mullan.

VALLEY

Jack Walker property on Big Creek, 25 miles north of Yellow Pine,  
is being explored by R. J. Black of Dallas, Texas.

Homestake Mining Company has been doing some exploration near  
the old Sunnyside-Dewey properties.

WASHINGTON

Inspiration Development Company is doing some exploration work  
on the Thorn Springs Mine, copper property near Weiser.

From January 1, 1973 through July 30, 1974, the Inspector of Mines' office made 415 inspections, issuing 1,305 notices of unsafe conditions and/or practices and 8 orders consisting of imminent nature.

The Inspector of Mines' office contributed 250 hours of teaching employees of mining companies the U.S. Bureau of Mines courses on the basic fundamentals of first aid, and accident prevention.

The office has put together a course to train persons in the use, storage, and transportation of explosives. This course is unique as one day is spent in the field instructing the class on wiring, timing and detonating charges. Five separate classes were given by the office through calendar year 1973, with 53 people participating.

The Governor's Mine Safety Advisory Board is continuing its work toward the development of a mine safety code consisting of all mandatory rules and regulations. It is believed that the revisions will be finalized sometime in 1975 at which time interpretations will then be drafted explaining the nature in which each standard, rule and regulation is to be applied; thus preventing any misunderstanding of any ambiguity of language.



## THE MINERAL INDUSTRY OF IDAHO IN 1973

Idaho mineral production in 1973 was valued at \$136 million, 28 percent higher than in 1972, according to the Bureau of Mines, U.S. Department of the Interior. Twenty mineral commodities were produced, nine of which were metallic and eleven nonmetallic minerals. Metals accounted for 63 percent of the total value. Silver was the most valuable commodity, yielding 26 percent of the State's mineral revenues. Lead, zinc, sand and gravel, and stone accounted for another 42 percent, and of the commodities whose values cannot be disclosed, phosphate rock and vanadium were most important.

Much of the increased value resulted from higher prices received in 1973. The production of silver fell 4 percent but its value rose 45 percent, and while the production of stone decreased 4 percent, its value increased 15 percent. The quantities of lead, zinc, and copper mined increased 1 percent, 19 percent, and 23 percent, respectively, but their values increased 9 percent, 39 percent, and 43 percent. On the other hand, the production of sand and gravel increased 9 percent, but its value remained about the same as in 1972. Shoshone and Caribou Counties led in mineral output, with Shoshone County accounting for 56 percent of the State's mineral value, and Caribou County 19 percent.

No mineral fuels were produced in Idaho during the year; however, six wildcat wells were drilled in search of oil or gas. Two were deep tests in Payette and Elmore Counties; all were dry holes. Interest in geothermal energy mounted in Idaho in 1973. About 30 percent of the State appeared to have geothermal resource potential, and 25 favorable sites were identified in a report released by the Idaho Department of Water Administration. Regulations governing the leasing of State-owned lands for geothermal exploration and development were expected to be ready in early 1974. At least two companies filed for or acquired leases for geothermal drilling.

Environmental concerns continued to receive attention in 1973. Construction of the Bureau of Mines pilot plant at Bunker Hill's Kellogg lead smelter, using the citrate process for the removal of SO<sub>2</sub> stack gases, began in the second quarter of the year. The U.S. Geological Survey and Federal Bureau of Mines began a 3-year study of mineral resources in a portion of the Boulder-Pioneer Mountains, which was under consideration for classification as a wilderness area.

---

This material prepared September 18, 1974, in the Division of Nonferrous Metals--Mineral Supply, of the United States Bureau of Mines, Washington D.C.

Mineral	Quantity		Value	
		(thousands)		(thousands)
Antimony ore and concentrate				
short tons, antimony content--	345	\$303	322	\$406
Clays-----thousand short tons--	57	415	42	227
Copper (recoverable content of ores, etc.)				
short tons--	2,942	3,013	3,625	4,314
Gem stones-----	NA	105	NA	110
Gold (recoverable content of ores, etc.)				
troy ounces--	2,884	169	2,696	264
Gypsum-----thousand short tons--	---	---	W	W
Lead (recoverable content of ores, etc.)				
short tons--	61,407	18,459	61,744	20,116
Mercury-----76-pound flasks--	161	35	---	---
Pumice-----thousand short tons--	W	W	80	110
Sand and gravel-----do-----	7,696	10,294	8,393	10,246
Silver (recoverable content of ores, etc.)				
thousand troy ounces--	14,251	24,012	13,620	34,840
Stone-----thousand short tons--	3,094	7,042	2,972	8,096
Zinc (recoverable content of ores, etc.)				
short tons--	38,647	13,720	46,107	19,052
Value of items that cannot be disclosed:				
Cement, garnet, iron ore, lime, perlite,				
phosphate rock, tungsten, vanadium, and				
values indicated by symbol W-----	XX	28,639	XX	38,300
Total-----	XX	106,206	XX	136,081
Total 1967 constant dollars-----	XX	NA	XX	p/NA

ANNUAL AVERAGE METAL PRICES—1910 TO 1974

Year	COPPER		LEAD Common N.Y. ¢/lb	ZINC P.W. E. St. Louis ¢/lb	TIN (a) N.Y. ¢/lb	SILVER (c) N.Y. ¢/oz	MERCURY (d) N.Y. \$/Flask	ALUMI- NUM Ingot ¢/lb
	Domestic Refinery ¢/lb	Foreign Refinery ¢/lb						
1910.....	12.738		4.446	5.370	34.123	53.486	47.06	22.25
1911.....	12.376		4.429	5.608	42.281	53.304	46.54	30.07
1912.....	16.341		4.471	6.799	46.096	60.835	42.46	22.01
1913.....	15.269		4.370	5.504	44.252	59.791	39.54	23.64
1914.....	13.602		3.862	5.061	34.301(b)	54.811	48.31	18.63
1915.....	17.275		4.673	13.054	38.590	49.684	87.01	33.98
1916.....	27.202		6.858	12.634	43.480	65.661	125.49	60.71
1917.....	27.180		8.787	8.813	61.802	81.417	106.30	51.59
1918.....	24.628		7.413	7.890	88.750	96.772	123.47	33.53
1919.....	18.691		5.579	6.988	63.328	111.122	92.15	32.14
1920.....	17.456		7.957	7.671	48.273	100.900	81.12	32.72
1921.....	12.502		4.545	4.655	29.916	62.654	45.46	21.11
1922.....	13.382		5.734	5.716	32.554	67.528	58.95	18.68
1923.....	14.421		7.267	6.607	42.664	64.873	66.50	25.41
1924.....	13.024		8.097	6.344	50.176	66.781	69.76	27.03
1925.....	14.042		9.020	7.622	57.893	69.065	83.13	27.19
1926.....	13.795		8.417	7.3337	65.285	62.107	91.90	26.99
1927.....	12.920		6.755	6.242	64.353	56.370	118.16	35.40
1928.....	14.570		6.305	6.027	50.427	58.176	123.51	24.300
1929.....	18.107		6.833	6.512	45.155	52.993	122.15	24.300
1930.....	12.982		5.511	4.556	31.694	38.154	115.01	23.787
1931.....	8.116		4.573	3.640	24.467	28.700	87.35	23.300
1932.....	5.555		3.111	2.876	22.017	27.892	57.93	23.300
1933.....	7.025	6.713	3.869	4.029	39.110	34.727	59.23	23.300
1934.....	8.428	7.271	3.866	4.158	52.191	47.973	73.87	23.300
1935.....	8.649	7.538	4.065	4.328	50.420	64.273	71.99	20.000
1936.....	9.474	9.230	4.710	4.901	46.441	45.087	79.92	20.000
1937.....	13.167	13.018	6.009	6.519	54.337	44.883	90.18	19.917
1938.....	10.000	9.695	4.739	4.610	42.301	43.225	75.47	20.000
1939.....	10.965	10.727	5.053	5.110	50.323	39.082	103.94	20.000
1940.....	11.296	10.770	5.179	6.335	49.827	34.773	176.86	18.691
1941.....	11.797	10.901	5.793	7.474	52.018	34.783	185.02	16.500
1942.....	11.775	11.684	6.481	8.250	52.000	38.333	196.35	15.000
1943.....	11.775	11.700	6.500	8.250	52.000	44.750	195.21	15.000
1944.....	11.775	11.700	6.500	8.250	52.000	44.750	118.36	15.000
1945.....	11.775	11.700	6.500	8.250	52.000	51.928	134.89	15.000
1946.....	13.820	14.791	8.109	8.726	54.544	80.151	98.24	15.000
1947.....	20.958	21.624	14.613	10.500	77.949	71.820	83.74	15.000
1948.....	22.038	22.348	18.043	13.589	99.250	74.361	76.49	15.733
1949.....	19.202	19.421	15.364	12.144	99.336	71.930	79.46	17.000
1950.....	21.325	21.549	13.296	13.866	95.539	74.169	81.26	17.713
1951.....	24.200	26.258	17.500	18.000	127.077	89.368	210.13	19.000
1952.....	24.200	31.746	16.467	16.215	120.473	84.941	199.097	19.410
1953.....	28.798	30.845	13.489	10.855	95.845	85.188	193.032	20.931
1954.....	29.694	29.899	14.054	10.681	91.838	85.250	264.386	21.784
1955.....	37.491	39.115	15.138	12.299	94.735	89.099	290.348	23.668
1956.....	41.818	40.434	16.013	13.494	101.409	90.826	259.923	24.032(e)
1957.....	29.576	27.157	14.658	11.399	96.261	90.820	246.978	25.416
1958.....	25.764	24.123	12.109	10.309	95.127	89.044	229.057	24.790
1959.....	31.182	28.892	12.211	11.448	102.053	91.202	227.484	24.738
1960.....	32.053	29.894	11.948	12.946	101.438	91.375	210.760	26.000
1961.....	29.921	27.919	10.871	11.342	113.311	92.449	197.605	25.458
1962.....	30.600	28.514	9.831	11.625	114.652	108.521	191.208	23.875
1963.....	30.600	28.413	11.137	11.997	116.652	127.912	189.451	22.623
1964.....	31.960	30.985	13.596	13.568	157.595	129.300	314.787	23.741
1965.....	35.017	35.604	16.000	14.500	178.202	129.300	570.747	24.507
1966.....	36.170	39.512	15.115	14.500	164.070	129.300	441.719	24.500
1967.....	38.226(f)	47.192	14.000	13.843	153.434	154.968	489.355	24.978
1968.....	41.847(g)	50.294	13.212	13.500	148.151	214.460	535.555	25.583
1969.....	47.534	61.969	14.895	14.600	164.498	179.067	505.043	27.176
1970.....	57.7(h)	62.747(h)	15.619	15.319	174.205	177.082	407.769	28.716
1971.....	51.433	47.870	13.800(i)	16.128(j)	167.348	154.564	392.413	29.000
1972.....	50.617	46.518	15.029	17.753	177.474	168.455	218.279	26.409
1973.....	58.852	78.758	16.285	20.658	227.558	255.756	286.227	25.000
1974.....	76.649	90.409	22.533	35.945	396.266	470.798	281.688	34.133

(a) 99% in 1897 to 1920 inclusive. Straits' quality thereafter. (b) Average for 11 months. (c) New York market...All quotations in cents per lb. except for silver, which is in cents per troy oz, and (d) mercury, which is in dollars per flask of 76 lb. (e) Unalloyed ingot beginning in 1956. (f) Based on the first eight months of 1967. Average was suspended from September through December. (g) Based on the last nine months of 1968. Average suspended Jan.-March. (h) Beginning in 1970 domestic prices are based on known production and selling rates; foreign prices are LME cash asked. (i) Effective Dec. 31, 1971, one delivered price-nationwide-replaced delivered New York basis quotation. (j) Delivered price, effective January 1971; E. St. Louis quote dropped. (ARTICLE FROM E/MJ MARCH 1975)

## PLOTTING WITH IMAGES FROM SPACE \*

By Priscilla Woll

Our concern about population growth recognizes not only that our resources are finite, but that known reserves of some essential mineral and fuel resources are fast disappearing. If we need a spur to step up exploration, the knowledge that our reserves are dwindling should provide it.

Our knowledge of deposit locations is limited by our understanding of how deposits were formed, what processes caused their concentration, and what we can use as indicators of a deposit's existence. The relationship between mineral deposits and geologic lineaments as one such indicator is substantiated by plots of mines, pits, and fields on maps showing geologic structures. Examination of space imagery has revealed many previously unknown structural features and corroborates the old saying, "You can't see the forest for the trees."

The perspective offered by an image taken from an altitude of over 500 miles of an area more than 100 miles on a side has opened a whole new world to mineral exploration geologists. Interpretation of satellite images has produced amazing results. Geologists have used mosaics of these images to enlarge their vision to a continental scale. At a scale of one to a million (one inch equals 16 miles), smaller features are enhanced and large ones are obscured. If the same mosaic is reduced in size, the larger features can be interpreted more easily as the smaller ones are obscured.

By interpreting these space images the scientists have been able to extend previously known lineaments, recognize new ones, and more importantly to reassess theories of tectonics which explain the whys and wherefores of mineral deposits. New mineral and mineral fuel exploration target areas have been identified, using the structural information gained from space imagery, in areas of Alaska, the western conterminous U.S., and in the Gulf Coast States.

Nevada is the testing ground of U.S. Geological Survey geologists for developing other techniques to indicate potential mineral deposits. It involves using the visible and near infrared parts of the spectrum to discriminate rocks rich in iron on their exposed surfaces. Space imagery from the Earth Resources Technology Satellite (ERTS-1) is acquired as four simultaneous black and white pictures in two separate visible wavelengths and two nonvisible (infrared) wavelengths. The multispectral characteristics of the imagery makes this technique work. Black and white images are produced from pairs of the original black and white images in which the gray tones of the new image are ratios of the gray tones of the originals. Then "false-color" composite pictures are produced from the new images. The color contrast of potentially mineralized

---

This article from "Our Natural Resources" The Choices Ahead", United States Department of the Interior Conservation Yearbook Series No. 10, 1974.

areas resulting from this manipulation is significantly greater than on conventional color photographs. It has made it possible to correlate particular colors with particular rock types, known mines, and prospects. Extension from the known to the unknown identifies possible mineral target areas.

Whether we choose to explore these targeted areas in detail, and whether we choose to develop those that prove to be actual reserves of commercial quality, are decisions that will be better reached if there is indeed better knowledge. Space technology is offering opportunities to expand the knowledge we require.

## REPORT OF FATAL ACCIDENT

J. R. Simplot Company  
Mineral and Chemical Division  
Pocatello Plant  
Pocatello, Idaho

March 9, 1973

Thomas Francis Maher  
Age: 25  
Type of Accident: Suffocation

### FOREWORD

The J. R. Simplot fertilizer plant is located 2 miles west of Pocatello in Power county. This is a processing plant for phosphate ore.

### NOTIFICATION OF ACCIDENT

This office was notified at 9:00 p.m. March 9, 1973, by Mr. Tom Brownlee, Plant Safety Engineer for J. R. Simplot Company, that there had been an accident at the No. 3 calciner feed bin. I, Milton D. Fife, Deputy Inspector of Mines, arrived at the plant at 11:30 p.m. March 9, 1973 and immediately began my investigation of this accident.

### INVESTIGATION OF ACCIDENT

11:30 p.m. on March 9, 1973 a formal investigation of the accident area was conducted. Accompanying on the investigation was Mr. Tom Brownlee; Mr. Kay Campbell, Area Superintendent; Mr. Michael B. Beitz, Power County Deputy Sheriff; Mr. Bud Kelly, Power County Coroner; and myself, Milton D. Fife, Deputy Inspector of Mines, State of Idaho.

Information relative to the location and areas of the accident is as follows. All equipment in the No. 3 calciner system was operating when the swing shift crew came to work at 4:00 p.m. and continued to do so without interruption until the discovery of Thomas Maher in the 48 inch feed belt. Due to maintenance crew working on an elevator in the old rock system there was no ore being fed into No. 3 bin even though all conveyors were running. At about 5:00 p.m. the calciner operator (Al Rhoades) went to the rock system elevator area and discussed the situation with the foreman (LeLan McLean) of that area. McLean told Rhoades that he thought it would be ready in an hour to two. Rhoades told McLean that he thought he had enough ore in No. 3 bin to last and if not he would feed some in

from the new rock crushing side. At this time it was agreed that when the elevator was repaired to go ahead and send ore through as the conveyors were running.

At about 6:00 p.m. or shortly thereafter Rhoades explained the rock system condition to Maher and the plans he had discussed with McLean.

The last time the victim was seen was about 6:45 p.m. He came into the back room of the control room and left again. Almost an hour later Rhoades (the operator) noticed from his instruments that the No. 3 calciner was running out of ore. He signaled for the laborer (Maher) several times on the siren. When he did not show up, Rhoades went out to check the 48 inch feed belt from the No. 3 ore bin and discovered the victims feet protruding from under the feed control gate.

At this time all systems were shut down and the victim removed from under the feed control gate.

Investigation from this point on revealed a broken shovel laying at the end of the 48 inch belt. An inspection at the top of the No. 3 storage bin at the hatch entrance it was noticed that the dust was off of the steps as if someone had entered the bin. At the bottom of the bin there were foot tracks which led under a pile of newly dumped ore. On the 18th step from the top a rope was fastened to the ladder extending under the pile of newly dumped ore. When personnel involved were asked about the rope they told us it was not there earlier and no one seemed to know where it came from.

#### GENERAL JOB DESCRIPTION OF CALCINE LABORER

One laborer is scheduled each shift to the calciners. Their duties are to check the levels in the mill bins and the levels in the calciner feed bins. They also have designated area to keep clean. Tom Mahers area was No. 2 calciner and area under No. 2 and No. 3 calciner feed belts that extended through No. 2 calciner. If the operator needs help to unplug chutes or check equipment outside of the control room he blows the siren. The laborer then goes to the control room and the operator instructs him on what to check.

#### SUMMARY AND CONCLUSIONS

At approximately 7:00 p.m. Friday March 9, 1973, Thomas Maher, Calciner Laborer, entered the No. 3 calciner feed bin. Approximately 7:40 p.m. the calciner operator discovered his feet and legs protruding from the bottom of the bin on the 48 inch feed belt.

Death was confirmed by autopsy to be from suffocation.

There is no explanation why Maher entered the bin. He was familiar with the operation and had been cautioned several times not to go in any of the storage bins. He was also familiar with the plant lock-out and tank entry procedures. He was reported to be intelligent, a good worker and in good spirits when last talked to by the operator.

It is speculated that he either dropped something in the bin and went to retrieve it or thought he could do a better job by breaking loose from the inside some ore that was hanging up on the cone bottom of the bin. Again, it is speculation whether he stepped on some material which caved away and dropped him or if he let himself down on the rope to the bottom and was trapped with ore sliding from the side of the cone.

#### RECOMMENDATIONS

1. That all bins with hatch covers be locked or secured against entry.
2. That more information and caution be projected to the employees at safety meetings.

#### ACKNOWLEDGMENTS

Cooperation of the J. R. Simplot Company management and safety personnel is deeply appreciated in making this investigation. This report is respectfully submitted to Mr. W. Carl Griner, State Inspector of Mines, State of Idaho, this 4th day of April 1973.

Milton D. Fife  
Deputy Inspector of Mines  
State of Idaho

REPORT OF FATAL ACCIDENT

Silver King Mines, Inc.  
Copper Cliff Mill  
Cuprum, Idaho

February 12, 1974

Lester Ratcliff

Age: 19

Type of Accident: Crushed by falling machinery

FOREWORD

The decedent, Lester Ratcliff, was a ball mill operator at the Copper Cliff Mill. He was 19 years of age and is survived by his wife Kathryn and one child, and his parents Mr. & Mrs. Eugene Ratcliff of Payette, Idaho.

This was the victims third term of employment with the company, the last two being in the mill; his first term in the mill being from January to March of 1973, and his last term began September 25, 1973.

At the time of the accident he was helping move a broken "Bull Gear" from a ball mill in the Copper Cliff mill.

The mine and mill are located about 42 miles in a northwesterly direction from Council, the county seat of Adams county. The property is near the village of Cuprum, Idaho, about 4 miles due east of the Hells Canyon rim of the Snake River. The roads are improved country roads, access is rarely a problem.

It is operated by Silver King Mines, Inc., of Salt Lake City, Utah.

The operating officials are Wiley Brooks, Manager of Mines (address at time of accident - Council, Idaho); Ray Lomas of Council, Assistant to Mr. Brooks; and Manager of the Copper Cliff operation; Dean Eskeridge, Mill Superintendent; and Bill O'Neil, Mine Superintendent.

The mine has been mined for the past two and one half years by the caving system, but will very shortly become an open pit operation.

The mill is a modernized standard mill, employing three stages of crushing, standard grinding and regrinding done by use of ball mills and classifiers. Concentration is done by standard flotation and filtration, the concentrate being hauled by truck to Council where it then is shipped by rail to smelters. The principal product is copper.

#### NOTIFICATION

On the morning of February 12, 1974, at about 9:00 a.m., this office was notified by Mr. Wiley Brooks of the accident by phone. As part of the telephone circuit is by radio, the transmission was very poor and we were only able to ascertain that a fatality had occurred. After relaying this meager information to the Mining Enforcement and Safety Administration of the U.S. Department of the Interior, we (W. Carl Griner, Inspector of Mines and I) immediately proceeded to the scene of the accident (some 165 miles from Boise) by car. We arrived at about 1:30 p.m.

#### INVESTIGATION

On arriving we found that the immediate cause of the fatality was that a one-half segment of the "Bull Gear" had toppled over on the victim causing almost instant death. The segment was 10 feet 4 inches in diameter and had an estimated weight in excess of one ton.

We then proceeded to question extensively all personnel involved. They were: Messrs. Wiley Brooks, Manager of Mines; Dean Eskeridge, Mill Superintendent; Jim Zanelli, Harold Young, Gary Warner, and Jim Sanders, all employees of the company. As there were no major discrepancies in the accounts and nothing heard to cast doubt, I will reconstruct the accident or series of events leading to the fatality from notes taken at the scene.

The "Bull Gear" had failed on the previous day having broken some teeth. The night shift removed the first segment and moved it by manually controlled electric hoist, on trolley and had placed it where it was at the time of the accident and had secured it by chain to one of the I-beams supporting the building.

The day shift, under the leadership of Mr. Eskeridge, prepared to move the segment to the outside of the building. A sling or choker was placed at the balance point on the segment (apex).

No one actually saw the segment tip over, this was very rationally explained. Part of the crew was engaged in readying the other half of the gear for removal, another part was engaged in pushing the hoist on its trolley into position to make the lift. Mr. Eskeridge had just released the securing chain on the segment, and turned his back to the segment to await the hand controls of the hoist, when it (the segment) toppled over. (His leg was brushed by the gear in falling.)

The victim was struck from the front in an area a few inches below the chin; he was laying in a spread-eagled position on his back. He made no outcry. The time was between 8:30 and 9:00 a.m. The body had been removed at the time of investigation.

The Adams County Coroner, John Hutchison, reports that death was caused by massive internal injuries to the chest and that death must have been instantaneous.

The segment was removed (by use of the hoist) from the victim. Mr. Zanelli, going for bars and blocks, found the segment removed when he returned. Mr. Zanelli being an advanced trained first-aid man immediately gave artificial respiration (mouth-to-mouth). He said he thought he felt a pulse. Mr. Brooks, who relieved him, said he felt no pulse.

Mr. Eskeridge said he shook the segment to test for stability and that it did not move. I tested this and found his statement to be true; I did, however, request the securing chain and "come-along" be released. I then was able to topple the segment by an effort that I can only describe as more than slight and less than strenuous.

As to the victim, we can only make assumptions. One that he slipped and grabbed the gear for support, this I will have to heavily discount, but not entirely exclude as although wet, the floor was not slick. The other, that he was adjusting the sling or choker, he himself perhaps assuming that the gear was still secured.

#### CONCLUSIONS

While there were no apparent violations of State Safety Code 5, the possibility exists of violation of 3:1, 3:2, and 4:3.

Very frequently in incidences of this kind, injury is the result of a chain of events. In the first place the ball mill "Bull Gear" breaking was an unplanned happening; second, while already suspended the night shift could perhaps have taken the gear outside; third, the gear should have remained secured until tension was applied; and last, both State and Federal agencies have accident prevention programs. Such programs could do much to alleviate any cause assigned to age and/or inexperience. However, lack of agency funding and/or the energy crisis could well be a factor.

#### RECOMMENDATIONS AND/OR ORDERS

Machinery, if of an unbalanced nature, shall remain secured until tension has been applied by the hoisting equipment.

Men shall not work near or under suspended loads. Suspended loads shall be moved or placed by use of taglines.

The company should avail itself to one of the standard accident prevention courses put on by either the State Inspector of Mines' office or the Mining Enforcement and Safety Administration.

W. R. Bondurant  
Deputy Inspector of Mines  
State of Idaho

## REPORT OF FATAL ACCIDENT

Sunshine Mining Company  
Sunshine Mine  
Kellogg, Idaho

March 30, 1974

Allie E. Sanders  
Age: 38  
Type of Accident: Fall in shaft

### FOREWORD

The Sunshine Mine is located 2 miles up Big Creek near Kellogg, Idaho and is one of Idaho's largest silver and lead producing mines.

### NOTIFICATION OF INSPECTOR

The Deputy Inspector of Mines field office at Pinehurst was notified of a serious accident at the Sunshine Mine by telephone at 1:20 p.m., March 30, 1974. The deputy was advised that a man had fallen into the Jewel shaft and was fatally injured at approximately 12:15 p.m. Arrangements were made to get statements and start an investigation at 3:00 p.m. that afternoon.

### INVESTIGATION OF ACCIDENT

A meeting at 3:00 p.m. the day of the accident was held at the mine to obtain testimony from two employees, Mr. Clifford Peterson and Mr. Robert Morris, who were working with Mr. Sanders and had witnessed the accident.

All three men were working in the shaft on shaft repair. The preceding shift had prepared the area to be repaired, close to the 2000 level in the Jewel shaft. Two sets of timber were to be replaced, the 309 and 310 sets. The 309 set was to be replaced first, which is standard procedure. A bulkhead was placed in the shaft on the 310 set to work from. This set was headedover solid through both the Jewel and Chippy sides. The 309 set was then removed and the men went to the surface for lunch. Returning from lunch, Mr. Peterson and Mr. Sanders went out on the bulkhead on the 310 set to put new timber in for the 309 set. Mr. Morris was on the set above on the Chippy side giving the hoist signals.

As the first timber arrived, Mr. Sanders took the end and moved to the north end of the shaft to put it in place. Mr. Peterson, who was helping, was standing close to a shaft guide. About that time, the wall-plate in the 310 set broke in two at the northeast corner, just in front of the post. The bulkhead fell out from under Mr. Sanders and he fell into the shaft. Mr. Peterson was able to grab the shaft guide, which prevented him from going into the shaft also.

The hoisting compartments were cleared as quickly as possible and the shaft was run to recover Mr. Sanders' body. It was then discovered that he had fallen the entire remaining distance of the shaft and his body was later recovered from the spill pocket (about 1900 feet below).

#### INSPECTION OF BROKEN TIMBERS

A visual inspection of the timbers of the 310 set revealed that the wall plate, which broke out was dryrotted completely through. This timber is 11-3/4" x 11-3/4" thick. Approximately 3-1/2 inches on the top had been worn away from muck material falling in the shaft.

#### NOTICES ISSUED

Safety belts cannot be worn at all times in this particular type of work for the simple reason that at times the lifeline itself would be a greater hazard than those normally encountered. However, safety belts should be worn at the discretion of the employee and especially during the placing of the bulkheads. The belt in conjunction with a second bulkhead placed in the next set below would be in order. The timbers that support the bulkheads or stagings should receive a good inspection and test for strength before the bulkhead is installed.

Notice number:

- 74B-3-43 Safety belts shall be worn and used by employees while working over the open shaft.
- 74B-3-44 A second staging shall be installed below the working deck to insure that persons cannot fall into the shaft, should the work-deck fail.

Respectfully submitted by:

W. H. Spear  
Deputy Inspector of Mines  
State of Idaho

---

#### L E G E N D

S & G	Sand and Gravel
GSCLZ	Gold, Silver, Copper, Lead, Zinc
INSP.	Inspected by the Inspector of Mines
O.P.	Open Pit
U.G.	Underground

COMMODITY	STATUS	NAME	MINE	INSP.	COUNTY	MEN	LOCATION	TYPE
S & G	Active	"A" Black Cat S & G, Inc. Box 434 Meridian, Idaho 83642		X	Ada	7	On Black Cat Road, near Meridian, Idaho	O.P.
S & G	Active	"A" Busy Bee S & G, Inc. 5033 State Boise, Idaho 83702	Black Cat Pit	X	Ada	2	1/2 mile S. of I-80 on Black Cat Road	O.P.
S & G	Active	Ada Sand and Gravel, Inc. Route 2 Meridian, Idaho 83642	Ada Pit	X	Ada	6	Located on S. Kun8 Road and Hwy. 69	O.P.
S & G	Active	Asphalt Paving & Const. Co. 3206 Pleasanton Avenue Boise, Idaho 83702	Pleasanton Highway 20 Cole Pit	X X	Ada	6 6 0	3206 Pleasanton,Boise Garden City, Idaho Boise, Idaho	O.P.
14 S & G	Active	Boise Paving & Asphalt 2190 S. Cole Road Boise, Idaho 83705		X	Ada	25	2190 S. Cole, Boise	O.P.
S & G	Active	Boise Sand and Gravel 3206 Pleasanton Ave. Boise, Idaho 83702	Slate Pit	X	Ada	13	W. of Garden City	O.P.
S & G	Active	Boise Valley Sand & Gravel Box 386 Meridian, Idaho 83642	Dalrymple Pit ,	X	Ada	2	2 mi. NW of Garden City	O.P.
S & G	Active	Clements Ready Mix 507 East 41st Boise, Idaho 83704		X	Ada		507 E. 41st,Boise	O.P.
S & G	Active	Consolidated Concrete Co. 625 N. 31st St. Boise, Idaho 83702		X	Ada	6	625 N. 31st, Boise	O.P.
S & G	Active	MCH, Inc. 5033 W. State Boise, Idaho 83702		X	Ada	3	5033 W. State, Boise	O.P.

COMMODITY	STATUS	NAME	MINE	INSP.	COUNTY	MEN	LOCATION	TYPE
S & G	Active	Monroc, Inc. Highway 44 Boise, Idaho 83702		X	Ada	10	Hwy. 44, Boise	O.P.
S & G	Active	Morrison-Knudsen Co., Inc. 400 Broadway Ave. Boise, Idaho 83706	Beacon Street	X	Ada	14	Division & Beacon, Boise	O.P.
S & G	Active	Nelson Sand & Gravel Co. P. O. Box 8007 Boise, Idaho 83705	State Lease 2110-R	X	Ada	6	4301 Federal Way, Boise	O.P. Plant
S & G	Active	Quinn Robbins Co., Inc. 703 Americana Blvd. Boise, Idaho 83702	Madison Pit Weidt Pit	X	Ada	8 0	31st & Madison W. of Gowen Field, Boise	Plant O.P.
15 S & G	Active	L. W. Vail Company Box 847 Pasco, Washington 99301	Indian Valley	X	Adams	13	State Pit near Cambridge	O.P.
S & G	Active	Hunziker Sand & Gravel Co. Box 2045 - Alameda Branch Pocatello, Idaho 83201	Baldwin Pit	X	Bannock	14	Hwy. 30 W, & Philbin Road	O.P.
S & G	Active	Kennaday Paving Co. P. O. Box 657 Idaho Falls, Idaho 83401	Bengal Pit		Bannock	6	End of Kraft Rd., near W. edge of Pocatello	O.P.
S & G	Active	Monroc, Inc. 2300 North Main Pocatello, Idaho 83201		X	Bannock	3	8 mi. W. of Pocatello on Syphon Road	O.P.
S & G	Inactive	Bear Lake Concrete Co. 615 Grant St. Montpelier, Idaho 83254		X	Bear Lake	0	4 mi. E. of Montpelier at Dingle	O.P.
S & G	Active	Circle B Crushing Fernwood, Idaho	Milwaukee Pit		Benewah	3	1 mi. S. of Fernwood on Hwy. 3	O.P.

---

COMMODITY	STATUS	NAME	MINE	INSP.	COUNTY	MEN	LOCATION	TYPE
S & G	Active	L. W. Vail Company Box 847 Pasco, Washington 99301	Headquarters Pit	X	Benewah	5	Headquarters, Idaho	O.P.
S & G	Active	Yardley Drilling Co., Inc. Box 338 - Parkwater Stn. Spokane, Washington 99206	State Pit BW-84S		Benewah	8	Near Plummer	O.P.
S & G	Active	Hampton Redi Mix Route 2 Shelley, Idaho 83274			Bingham		E. of Shelley	O.P.
S & G	Active	Monroc, Inc. Route 2 - Box 3 Blackfoot, Idaho 83221	Blackfoot Pit	X	Bingham	10	W. of Snake River Bridge on Hwy. 39 at Blackfoot	O.P.
91 S & G	Active	Holmes Construction Co. P. O. Box 27 Heyburn, Idaho 83336	State Pit BE-100S	X	Blaine	9	1 mi. N. of Hailey	O.P.
S & G	Active	S & V Construction Co. Box 848 Hailey, Idaho 83333		X	Blaine	5	10 mi. S. of Hailey	O.P.
S & G	Active	Bargain Supply Co. 231 N. 3rd Sandpoint, Idaho 83864	Schell Pit	X	Bonner	3	6 mi. S. of Sandpoint	O.P.
S & G	Active	DeAtley Corporation c/o Box 8979 Portland, Oregon 97208	Clagstone Pit	X	Bonner	11	1/2 mi. SW of Clagstone along R.R. tracks	O.P.
S & G	Active	Frank Linscott Route 1 Segle, Idaho 83860	Linscott Pit #1		Bonner	2	4 mi. S. of Sandpoint	O.P.
S & G	Active	Newport Concrete Co. P. O. Box 708 Newport, Washington 99156	Newport Pit & Plant		Bonner	4	Oldtown	O.P.

COMMODITY	STATUS	NAME	MINE	INSP.	COUNTY	MEN	LOCATION	TYPE
S & G	Active	J. P. Schell Gravel Co. Star Route Sandpoint, Idaho 83864	Schell Pit		Bonner	1-3	6 mi. S. of Sandpoint	O.P.
S & G	Active	Arlee Stewart 814 Lincoln Avenue Priest River, Idaho 83856		X	Bonner	4	814 Lincoln, Priest River	O.P.
S & G	Active	Amcors, Inc. P. O. Box 1141 Idaho Falls, Idaho 83401	Albino Pit	X X	Bonneville	4 2	S. of Idaho Falls Menan, Idaho	O.P. O.P.
S & G	Active	Burns Bros. Concrete Products P. O. Box 1813 Idaho Falls, Idaho 83401		X	Bonneville	7	S. of Idaho Falls	O.P.
S & G	Active	Kennaday Paving Co. P. O. Box 657 Idaho Falls, Idaho 83401	Hatch Pit	X	Bonneville	7	Idaho Falls	O.P.
			St. Clair Pit	X		7	Idaho Falls	O.P.
			Wheeler	X		7	Ririe	O.P.
S & G	Active	Monroc, Inc. P. O. Box 1221 Idaho Falls, Idaho 83401		X	Bonneville	4	Outskirts of Idaho Falls on Milligan Rd.	O.P.
S & G	Active	Bonnors Ferry Redi Mix Box H Bonnors Ferry, Idaho 83805	District 2	X	Boundary	2	Bonnors Ferry	O.P.
S & G	Active	A. A. Redimix Route 7 - Box 7386 Nampa, Idaho 83651		X	Canyon	10	S. Midland Blvd., Nampa	Plant
S & G	Active	Boise Paving & Asphalt 2190 S. Cole Road Boise, Idaho 83705	McDermitt Pit	X	Canyon	35	1 mi. E. of Nampa	O.P.
S & G	Active	Bowman Sand and Gravel Co. Route 4 Nampa, Idaho 83651		X	Canyon	3	S. Midland Blvd., Nampa	O.P.

COMMODITY	STATUS	NAME	MINE	INSP.	COUNTY	MEN	LOCATION	TYPE
S & G	Active	G & B Ready Mix Route 2 - Box 250 Nampa, Idaho 83651		X	Canyon	9	2 mi. E. of Nampa	O.P.
S & G	Active	Idaho Concrete Pipe Co. 222 Caldwell Blvd. Nampa, Idaho 83651	Caldwell Pit Nampa Pit Dell Pit Henry-Francke Pit Karcher Pit Beaumont Pit James Henry Pit	X X	Canyon	11 11 0 0 0 0 0	T4N, R3W T3N, R3W T2N, R2W T3N, R1W T3N, R3E T1N, R2W T3N, R1W	O.P. O.P. O.P. O.P. O.P. O.P. O.P.
S & G	Active	Nelson-Deppe, Inc. Box 768 Nampa, Idaho 83651	Dell Pit Karcher Pit	X X	Canyon	8	Mobile unit--moves from pit to pit	O.P.
S & G	Active	Rambo Crushing Co. Cherry Lane Nampa, Idaho 83651		X	Canyon	5	Mobile Plant	Plant
S & G	Active	Strang Sand and Gravel Route 2 - Box 250 Nampa, Idaho 83651	Strang Pit	X	Canyon	10	1/2 mi. S. of Hwy. 30 on Star Rd.	O.P.
S & G	Active	Wright Construction Co. Route 2 Nampa, Idaho 83651	Blackcat Pit	X	Canyon	3	1-1/2 mi. S. of Hwy. 30 on Black Cat Rd. near Nampa	O.P.
S & G	Active	Gordon Paving Company Route 2 - Box 47 Burley, Idaho 83318		X	Cassia	3	W. of Burley	O.P.
S & G	Active	Hoffbuhr Ready Mix, Inc. Box 276 Burley, Idaho 83318		X	Cassia	1	6-1/2 mi. S. of Burley	O.P.
S & G	Active	Holmes Construction Co., Inc. P. O. Box 27 Heyburn, Idaho 83336		X	Cassia	5	Burley, Idaho	O.P.

COMMODITY	STATUS	NAME	MINE	INSP.	COUNTY	MEN	LOCATION	TYPE
S & G	Active	Industrial Construction Co. Route 1 Declo, Idaho 83323	State Pit CS-162	X	Cassia	10	Near Declo, Idaho	O.P.
S & G	Active	Magic Valley S & G Company 419 W. 2nd Street Burley, Idaho 83318		X	Cassia	4	18-1/2 mi. S. and 1 mi. E. of Burley on Hwy. 27	O.P.
S & G	Active	J. K. Merrill & Sons, Inc. P. O. Box 4065 Pocatello, Idaho 83201	State Pit CL-81	X	Clark	5	N. of Kilgore	O.P.
S & G	Active	C. V. Concrete Products Box 507 Orofino, Idaho 83544		X	Clearwater	7	Orofino, Idaho	O.P.
19 S & G	Active	DeAtley Corp. P. O. Box 648 Lewiston, Idaho 83501	Headquarters Musselshell	X X	Clearwater	13 18	Headquarters, Idaho Near Pierce, Idaho	O.P. O.P.
S & G	Active	Gem State Enterprises Box 191 Orofino, Idaho 83544		X	Clearwater	3	U.S. 12, W. of Orofino	Plant
S & G	Active	L. W. Vail Company, Inc. Box 847 Pasco, Washington 99301	Weippe Pit	X	Clearwater	5	Near Weippe, Idaho	O.P.
S & G	Active	Salmon River Redi Mix P. O. Box 86 Challis, Idaho 83226		X	Custer	2	Challis, Idaho	O.P.
S & G	Inactive	Idaho Concrete Pipe 222 Caldwell Blvd. Nampa, Idaho 83651	Grandview Pit	X	Elmore		T4S, R3E, near Grandview	O.P.
S & G	Active	Garner Concrete Co., Inc. P. O. Box 326 Rexburg, Idaho 83440		X	Fremont	2	4 mi. N. of Sugar City	O.P.

COMMODITY	STATUS	NAME	MINE	INSP.	COUNTY	MEN	LOCATION	TYPE
S & G	Active	City Transfer Ready Mix, Inc. Box 247 Emmett, Idaho 83617		X	Gem	10	120 E. Park, Emmett	O.P.
S & G	Active	Wedron Silica Division Del Monte Properties Co. Box 651 Emmett, Idaho 83617	Barnes Pit	X	Gem	2	3 mi. W of Emmett	O.P. Plant
S & G	Active	Monroc, Inc. Box 274 Twin Falls, Idaho 83301	Buckeye Smith Pit Wilson Pit		Gooding	0 0 0	Hagerman, Idaho Hagerman, Idaho Gooding, Idaho	O.P. O.P. O.P.
S & G	Active	Smith Sand and Gravel Bliss, Idaho 83314			Gooding	0	Bliss, Idaho	O.P.
S & G	Active	Riener Bros. Pre-Mix Box 85 Ferdinand, Idaho 83526	Ferdinand	X	Idaho	3	5 mi. S. of Ferdinand	O.P.
S & G	Active	Salmon River Sand & Gravel P. O. Box 86 Whitebird, Idaho 83554	Salmon River Pit	X	Idaho	2	10 mi. S. of Whitebird	O.P.
S & G	Active	Seubert Excavators Box 47 Cottonwood, Idaho 83522	Fish Creek Pit	X	Idaho	12	2 mi. up Fish Creek Rd. from Grangeville- Salmon Rd.	O.P.
S & G	Active	Tennessee Dray, Inc. 722 North "C" Street Grangeville, Idaho 83530	Carpenter Pit	X	Idaho	3	SW of Grangeville	O.P.
S & G	Active	Twin Falls Construction Co. Box 325 Twin Falls, Idaho 83301	Rim Rock		Jerome	6	Near Twin Falls	O.P.
S & G	Active	B & N Construction P. O. Box 189 Coeur d'Alene, Idaho 83814	Holman Pit	X	Kootenai	3	1 mi. W of Spirit Lake	O.P.

COMMODITY	STATUS	NAME	MINE	INSP.	COUNTY	MEN	LOCATION	TYPE
S & G	Active	Central Pre-Mix Concrete Co. P. O. Box 757 Coeur d'Alene, Idaho 83814		X	Kootenai	8	W. of Coeur d'Alene on Hwy. 10 T50N, R4W, S10	O.P.
S & G	Active	Inland Asphalt Co. Box 265-A Coeur d'Alene, Idaho 83814			Kootenai	0	1 mi. N of Hwy. 90 on Ramsey Rd. in Coeur d'Alene	O.P.
S & G	Active	Moen, Inc. Box 279 Coeur d'Alene, Idaho 83814	Moen Pit	X	Kootenai	2	Coeur d'Alene	O.P.
S & G	Active	N. A. Degerstrom, Inc. P. O. Box 425 Spokane, Washington 99210	Coeur d'Alene Pit	X	Kootenai	14	1/2 mi. N of I-90 on Ramsey Rd.	O.P.
21 S & G	Active	Panhandle Drilling & Blasting Route 2 St. Maries, Idaho 83861	State Pit KT-2S	X	Kootenai	2	8 mi. N of Worley	O.P.
S & G	Active	Carl Carbon, Inc. Box 5153 Spokane, Washington 99205	Potlatch Quarry	X	Latah	12	1/2 mi. S of Potlatch	O.P.
S & G	Active	Lone Pine Equipment P. O. Box 615 Kimberly, Idaho 83341		X	Lemhi	3	3 mi. S of Leadore	O.P.
S & G	Active	Valley Sand and Gravel Box 2966 Missoula, Montana 59801	Iron Creek Pit	X	Lemhi	4	5 mi. up Iron Creek	O.P.
S & G	Active	Ida-Lew Construction Co. Kamiah, Idaho 83536		X	Lewis	3	Kamiah, Idaho	O.P.
S & G	Active	Beymer Paving, Inc. Box 24 Twin Falls, Idaho 83301	State Pit LN 6	X	Lincoln	0	E of Hwy. 93 near Shoshone Ice Caves	O.P.

COMMODITY	STATUS	NAME	MINE	INSP.	COUNTY	MEN	LOCATION	TYPE
S & G	Active	Low's Sand and Gravel Route 1 - Box 3 Shoshone, Idaho 83352		X	Lincoln	4	1/2 mi. E of Shoshone on Hwy. 26	O.P.
S & G	Active	Kennaday Paving Co. P. O. Box 657 Idaho Falls, Idaho 83401	Rexburg Pit and Plant		Madison	0	3 mi. S and 1 mi. W of Rexburg	O.P. Plant
S & G	Active	Walters Ready-Mix Concrete Co. Box 377 Rexburg, Idaho 83440	Walters Pit and Plant	X	Madison	3	342 W. 4th N, Rexburg, Idaho	O.P. Plant
S & G	Active	Kloepfer Sand & Gravel Trans. Co. P. O. Box 81 Paul, Idaho 83347	Burley Plant Paul Plant	X X	Minidoka	2 3	Burley, Idaho Paul, Idaho	O.P. O.P.
22 S & G	Active	Magic Valley Sand & Gravel 419 W. 2nd Burley, Idaho 83318		X	Minidoka	4	N side of the Snake River, W of the bridge in Burley	Plant
S & G	Active	Triple "C" Concrete Box 95 Rupert, Idaho 83350	Waynes Pit Rupert Pit	X X	Minidoka	4 15	E of Rupert, Idaho Reed Ave., Rupert	O.P. O.P.
S & G	Active	Atlas Sand and Gravel Box 591 Lewiston, Idaho 83501			Nez Perce	0	Lewiston, Idaho	O.P.
S & G	Active	Central Pre-Mix Concrete Co. 237 8th Street Moscow, Idaho 83843	Lewiston Plant	X	Nez Perce	3	Lewiston, Idaho	Plant
S & G	Active	Crystal Sand Co. Box 112B Moscow, Idaho 83843		X	Nez Perce	2	Genesee, Idaho	O.P.
S & G	Active	DeAtley Corporation Box 648 Lewiston, Idaho 83501	Duthie Pit	X	Nez Perce	10	Upper Snake River Ave., Lewiston	O.P.

COMMODITY	STATUS	NAME	MINE	INSP.	COUNTY	MEN	LOCATION	TYPE
S & G	Active	Peter Kiewet & Sons Co. Box 172 Lewiston, Idaho 83501	Hell's Gate Pit	X	Nez Perce	25	Snake River Rd., Lewiston	O.P.
S & G	Active	Lewiston Pre-Mix Co. P. O. Box 646 Lewiston, Idaho 83501		X	Nez Perce		Lewiston, Idaho	Plant
S & G	Active	Poe Asphalt 613 Maple Lewiston, Idaho 83501		X	Nez Perce		Snake River Rd., Lewiston	Plant
S & G	Active	E. J. Sands 2918 N. Waterworks Spokane, Washington		X	Nez Perce	6	7 mi. S of Lewiston on Hwy. 12	O.P.
23 S & G	Active	Lone Pine Equipment P. O. Box 615 Kimberly, Idaho 83341		X	Oneida	3	2 mi. N of Malad	O.P.
S & G	Active	Casey Donaho & Sons Hill Road Payette, Idaho 83661		X	Payette	4	Payette, Idaho	O.P.
S & G	Active	Weiser Redy Mix 773 E. Commercial Weiser, Idaho 83672		X	Payette		Weiser, Idaho	O.P.
S & G	Active	Bannock Paving Box 4002 Pocatello, Idaho 83201	FMC Slag Pile	X	Power	5	W of Pocatello	Plant
S & G	Active	J & C Construction Co. Box 474 Spokane, Washington 99206	State Pit SH-30	X	Shoshone	20	E edge of Pinehurst	O.P.
S & G	Active	Zanetti Bros. P. O. Box 500 Osburn, Idaho 83849	Osburn Pit Two-Mile Pit & Plant	X	Shoshone	3	E edge of Osburn	O.P.
				X	Shoshone	5	Osburn, Idaho	O.P.

COMMODITY	STATUS	NAME	MINE	INSP.	COUNTY	MEN	LOCATION	TYPE
S & G	Active	Beymer Paving Inc. Box 34 Twin Falls, Idaho 83301	Champ Grey	X	Twin Falls	5	SE of the Ice Caves	O.P.
S & G	Active	Colonial Concrete, Inc. P. O. Box 1151 Twin Falls, Idaho 83301		X	Twin Falls	1	Addison Ave. W., Twin Falls	O.P.
S & G	Active	Monroc, Inc. Box 274 Twin Falls, Idaho 83301	Twin Falls Plant Wendall Plant Smith Pit	X X X	Twin Falls	2 3	Twin Falls, Idaho Wendall, Idaho W of Hagerman	O.P. O.P. O.P.
S & G	Active	Gold Fork Concrete Products P. O. Box 326 Donnelly, Idaho 83615		X	Valley	2	SE of Donnelly on Gold Fork Creek	O.P.
24 S & G	Active	Rowland Bros. P.O. Box 809 McCall, Idaho 83638	Soulen Pit and Plant	X	Valley	5	5 mi. SW of McCall on Payette River	O.P.
S & G	Active	Bristol N.W. Silica 10818 N.W. St. Helens Road Portland, Oregon 97231	Jerry No. 1  Bristol Mill	X  X	Washington	6 4	Fourth of July Creek off Mann Creek Rd. Weiser, Idaho	O.P.  Mill
S & G	Active	C & W Sand and Gravel c/o John Witte Weiser, Idaho 83672		X	Washington		Weiser, Idaho	O.P.
S & G	Active	Ford Ready Mix c/o Charlie Ford Weiser, Idaho 83672		X	Washington	7	Weiser, Idaho	O.P.

COMMODITY	STATUS	NAME	MINE	COUNTY	MEN	LOCATION	TYPE
S & G	Seasonal	Ada County Road Department 440 N. Cloverdale Road Boise, Idaho 83702		Ada		T3N, R1E, S31	O.P.
				Ada		T4N, R1E, S10	O.P.
S & G	Seasonal	Adams County Hwy. Dept. Council, Idaho 83612		Adams		Taken out of the Weiser River and Hornet Creek	O.P.
S & G	Seasonal	Bannock County Engineer Room 105, County Court House Pocatello, Idaho 83201		Bannock Bannock		T10S, R36E, S11 T6S, R34E, S5	O.P. O.P.
S & G	Seasonal	Bear Lake County Hwy. Dept. Paris, Idaho 83261		Bear Lake		County fairgrounds	O.P.
				Bear Lake		at Montpelier	
				Bear Lake		3 mi. S of Montpelier on Hwy 30	O.P.
				Bear Lake		Bloomington on Warm Creek	O.P.
S & G	Seasonal	Benewah County Hwy. Dept. Saint Maries, Idaho 83861		Benewah		3-1/2 mi. E of Emida	O.P.
				Benewah		1-1/2 mi. s of Santa	O.P.
S & G	Seasonal	Bingham County Commrs. Blackfoot, Idaho 83221		Bingham		T2S, R34E, S23	O.P.
				Bingham		T2S, R34E, S24	O.P.
				Bingham		T4S, R33E, S30	O.P.
				Bingham		T4S, R33E, S31	O.P.
				Bingham		T4S, R33E, S11	O.P.
				Bingham		T1S, R37E, S28	O.P.
				Bingham		T2S, R36E, S5	O.P.
				Bingham Bingham		T1N, R36E, S36 T2S, R35E, S34	O.P. O.P.
S & G	Seasonal	Boise County Hwy. Dept. Idaho City, Idaho 83631		Boise		Buy old tailings	O.P.

25

COMMODITY	STATUS	NAME	MINE	COUNTY	MEN	LOCATION	TYPE
S & G	Seasonal	Bonneville County Engineer Idaho Falls, Idaho 83401		Bonneville		T1N, R38E, S18	O.P.
				Bonneville		T1N, R37E, S4	O.P.
				Bonneville		T1N, R37E, S32	O.P.
				Bonneville		T1N, R37E, S3	O.P.
				Bonneville		T2N, R37E, S35	O.P.
				Bonneville		T1N, R37E, S12	O.P.
				Bonneville		T2N, R37E, S2	O.P.
				Bonneville		T3N, R38E, S16	O.P.
				Bonneville		T3N, R38E, S36	O.P.
				Bonneville		T3N, R41E, S6	O.P.
				Bonneville		T3N, R38E, S11	O.P.
				Bonneville		T3N, R38E, S1	O.P.
				Bonneville		T3N, R38E, S6	O.P.
				Bonneville		T3N, R40E, S6	O.P.
				Bonneville		T3N, R38E, S6	O.P.
				Bonneville		T1N, R44E, S17	O.P.
Bonneville		T2N, R38E, S12	O.P.				
Bonneville		T3N, R37E, S35	O.P.				
Bonneville		T3N, R38E, S30	O.P.				
S & G	Seasonal	Boundary County Road & Bridge Dept. Bonners Ferry, Idaho 83805	Naples Pit	Boundary		Naples, Idaho	O.P.
S & G	Seasonal	Buhl Highway District Buhl, Idaho 83316		Twin Falls		5 mi. W and 1 mi. N and 3/4 mi. W of Buhl	O.P.
S & G	Seasonal	Bureau of Public Roads 412 Mohawk Bldg. 222 S. W. Morrison Portland, Oregon 97204		Boise		T7N, R2E, S23	O.P.
				Bonner		T56N, R2E, S17	O.P.
				Idaho		T30N, R7E, S31	O.P.
				Idaho		T29N, R7E, S5	O.P.
				Idaho		T22N, R4E, S26	O.P.
				Shoshone		T45N, R2E, S3	O.P.
S & G	Seasonal	Burley Highway District Burley, Idaho 83318	Oakley Pit	Cassia	3	6 mi. S on Oakley Rd.	O.P.
				Cassia		1-1/2 mi. E and 8 mi. S on Hwy 150E	O.P.

COMMODITY	STATUS	NAME	MINE	COUNTY	MEN	LOCATION	TYPE
S & G	Seasonal	Butte County Hwy. Dept. Arco, Idaho 83213		Butte		T6N, R26E, S7	O.P.
S & G	Seasonal	Camas County Hwy. Dept. Fairfield, Idaho 83327		Camas		Obtained from private sources	
S & G	Seasonal	Canyon County Road and Bridge Dept. Caldwell, Idaho 83605		Canyon		Leased from private owners along Boise River	
S & G	Seasonal	Caribou County Hwy. Dept. Soda Springs, Idaho 83276		Caribou		1 mi. S and 1 mi. E of Grace	O.P.
				Caribou	4	1 mi. SE of Soda Springs	O.P.
S & G	Seasonal	Clark County Auditor Dubois, Idaho 83423		Clark		T12N, R38E, S23	O.P.
				Clark		T13N, R39E, S36	O.P.
				Clark		T13N, R39E, S30	O.P.
				Clark		T11N, R38E, S1	O.P.
				Clark		T12N, R37E, S19	O.P.
				Clark		T11N, R34E, S25	O.P.
				Clark		T9N, R33E, S12	O.P.
S & G	Seasonal	Clearwater County Highway Dept. Orofino, Idaho 83544		Clearwater		15 mi. E of Orofino	O.P.
				Clearwater		10-1/2 mi. S of Orofino	O.P.
				Clearwater		10 mi. N of Orofino	O.P.
				Clearwater		15 mi. NE of Orofino	O.P.
				Clearwater		20 mi. E of Orofino	O.P.
S & G	Seasonal	Custer County Hwy. Dept. Challis, Idaho 83226		Custer		T13N, R23E, S13 & 140.	O.P.
				Custer		T14N, R22E, S34	O.P.
S & G	Seasonal	Filer Highway District Filer, Idaho 83328		Twin Falls		4 mi. W of Hollister	O.P.
				Twin Falls		5 mi. N of Filer in the Snake River Canyon	O.P.



COMMODITY	STATUS	NAME	MINE	COUNTY	MEN	LOCATION	TYPE			
S & G	Seasonal	Idaho Dept. of Highways District No. 1 - Continued	053	Franklin		T14S, R39E, S25	O.P.			
			056	Franklin		T14S, R40E, S31	O.P.			
			044	Oneida		T14S, R36E, S10	O.P.			
			043	Oneida		T14S, R36E, S10	O.P.			
			4A	Oneida		T15S, R30E, S35	O.P.			
			054	Power		T6S, R33E, S5	O.P.			
			001	Power		T6S, R33E, S20	O.P.			
			069	Power		T6S, R33E, S11	O.P.			
			S & G	Seasonal	Idaho Dept. of Highways District No. 2 Box 338 Shoshone, Idaho 83352	087	Blaine		T1S, R22E, S17	O.P.
						091	Blaine		T1N, R19E, S20	O.P.
						092	Blaine		T3N, R18E, S7	O.P.
9	Blaine					T1N, R18E, S12	O.P.			
100	Blaine					T3N, R18E, S33	O.P.			
101	Blaine					T1S, R21E, S22	O.P.			
094A	Blaine					T1S, R18E, S20	O.P.			
061	Butte					T5N, R26E, S28	O.P.			
003	Butte					T3N, R26E, S11	O.P.			
043	Camas					T1S, R14E, S11	O.P.			
048	Camas					T1S, R15E, S1	O.P.			
067	Camas					T1S, R14E, S3	O.P.			
002	Camas					T1N, R13E, S21	O.P.			
145	Cassia					T10S, R22E, S26	O.P.			
127	Cassia					T10S, R24E, S11	O.P.			
003	Cassia					T13S, R29E, S31	O.P.			
004	Cassia					T7S, R23E, S26	O.P.			
010	Cassia					T12S, R27E, S23	O.P.			
057	Cassia					T12S, R22E, S21	O.P.			
123	Cassia					T9S, R27E, S36	O.P.			
128	Cassia					T10S, R22E, S25	O.P.			
129	Cassia					T9S, R5E, S16	O.P.			
150	Cassia					T12S, R23E, S3	O.P.			
003	Cassia					T13S, R29E, S31	O.P.			
056	Custer					T7N, R24E, S28	O.P.			
060	Elmore					T5S, R11E, S36	O.P.			
045	Gooding					T7S, R13E, S35	O.P.			
042	Gooding					T6S, R13E, S18	O.P.			
054	Gooding					T6S, R14E, S11	O.P.			
007	Jerome					T10S, R21E, S8	O.P.			
064	Lincoln					T4S, R19E, S26	O.P.			

COMMODITY	STATUS	NAME	MINE	COUNTY	MEN	LOCATION	TYPE
S & G	Seasonal	Idaho Dept. of Highways District No. 2 - Continued	74	Lincoln		T3S, R18E, S15	O.P.
			75	Lincoln		T3S, R18E, S15	O.P.
			030	Minidoka		T10S, R23E, S8	O.P.
			032	Minidoka		T10S, R24E, S10	O.P.
			034	Minidoka		T10S, R23E, S11	O.P.
			066	Twin Falls		T16S, R15E, S6	O.P.
			049A	Twin Falls		T13S, R15E, S1	O.P.
			S & G	Seasonal	Idaho Dept. of Highways District No. 3 Boise, Idaho 83701	071	Ada
098	Ada					T2N, R1E, S14	O.P.
078	Ada					T4N, R1E, S10	O.P.
062	Ada					T2N, R3E, S34	O.P.
060	Adams					T19N, R1E, S24	O.P.
61	Adams					T18N, R2E, S1	O.P.
040	Boise					T9N, R4E, S27	O.P.
080	Canyon					T5N, R5W, S35	O.P.
5	Canyon					T3N, R2W, S15	O.P.
103	Canyon					T4N, R3W, S16	O.P.
094	Elmore					T5S, R11E, S34	O.P.
92	Elmore					T3S, R6E, S10	O.P.
004	Gem					T14S, R3E, S12	O.P.
084	Owyhee					T14S, R3E, S22	O.P.
065	Owyhee					T3S, R1W, S19	O.P.
10	Valley					T15N, R3E, S1	O.P.
050	Washington					T15N, R2W, S31	O.P.
S & G	Seasonal	Idaho Dept. of Highways District No. 4 P. O. Box 638 Lewiston, Idaho 83501	069	Clearwater		T35N, R4E, S15	O.P.
			104	Idaho		T30N, R4E, S6	O.P.
			126	Idaho		T23N, R1E, S29	O.P.
			105	Idaho		T32N, R4E, S17	O.P.
			110	Idaho		T26N, R1E, S35	O.P.
			117	Idaho		T30N, R3E, S20	O.P.
			107	Idaho		T31N, R2E, S26	O.P.
			141	Idaho		T32N, R5E, S4	O.P.
			131	Latah		T40N, R2W, S20	O.P.
			133	Latah		T38N, R3W, S35	O.P.
			087	Latah		T40N, R2W, S35	O.P.
			125	Latah		T41N, R5W, S9	O.P.

COMMODITY	STATUS	NAME	MINE	COUNTY	MEN	LOCATION	TYPE			
S & G	Seasonal	Idaho Dept. of Highways District No. 4 - Continued	126	Latah		T39N, R2W, S32	O.P.			
			135	Latah		T38N, R3W, S5	O.P.			
			137	Latah		T39N, R3W, S32	O.P.			
			138	Latah		T39N, R3W, S8	O.P.			
			058	Lewis		T35N, R2E, S19	O.P.			
			059	Lewis		T33N, R2W, S3	O.P.			
			060	Lewis		T34N, R2W, S21	O.P.			
			061	Lewis		T33N, R1W, S6	O.P.			
			109	Nez Perce		T35N, R3W, S13	O.P.			
			103	Nez Perce		T36N, R4W, S20	O.P.			
			069	Nez Perce		T35N, R4W, S24	O.P.			
			115	Nez Perce		T35N, R4W, S13	O.P.			
			114	Nez Perce		T37N, R2W, S34	O.P.			
			011	Nez Perce		T36N, R5W, S18	O.P.			
			107	Nez Perce		T37N, R1W, S4	O.P.			
			S & G	Seasonal	Idaho Dept. of Highways District No. 5 Coeur d'Alene, Idaho 83814	012	Benewah		T46N, R3W, S23	O.P.
						019	Benewah		T46N, R2W, S6	O.P.
077	Benewah					T45N, R1W, S20	O.P.			
84	Benewah					T46N, R4W, S7	O.P.			
103	Bonner					T56N, R4W, S30	O.P.			
112	Bonner					T57N, R2W, S17	O.P.			
119	Bonner					T56N, R2W, S16	O.P.			
088	Bonner					T56N, R5W, S14	O.P.			
121	Bonner					T57N, R3W, S26	O.P.			
097	Bonner					T54N, R3W, S24	O.P.			
002	Bonner					T57N, R3W, S25	O.P.			
080	Bonner					T55N, R2E, S13	O.P.			
087	Bonner					T56N, R2W, S3	O.P.			
2A	Bonner					T57N, R3W, S25	O.P.			
80A	Bonner					T55N, R2E, S13	O.P.			
062	Bonner					T56N, R6W, S25	O.P.			
125	Bonner					T56N, R2E, S35	O.P.			
005	Boundary					T62N, R2E, S17	O.P.			
037	Boundary					T62N, R2E, S14	O.P.			
168	Kootenai					T49N, R1E, S33	O.P.			
139	Kootenai		T48N, R1W, S6	O.P.						
172	Kootenai		T52N, R4W, S32	O.P.						

COMMODITY	STATUS	NAME	MINE	COUNTY	MEN	LOCATION	TYPE			
S & G	Seasonal	Idaho Dept. of Highways District No. 5 - Continued	022	Kootenai		T51N, R5W, S9	O.P.			
			110	Kootenai		T53N, R3W, S21	O.P.			
			126	Kootenai		T49N, R2W, S6	O.P.			
			149	Kootenai		T49N, R3W, S5	O.P.			
			155	Kootenai		T49N, R1W, S17	O.P.			
			176	Kootenai		T50N, R5W, S6	O.P.			
			148	Kootenai		T52N, R4W, S5	O.P.			
			151	Kootenai		T48N, R3W, S28	O.P.			
			012	Kootenai		T52N, R4W, S26	O.P.			
			186	Kootenai		T47N, R2W	O.P.			
			041	Shoshone		T49N, R2E, S19	O.P.			
			030	Shoshone		T48N, R4E, S26	O.P.			
			078	Shoshone		T48N, R4E, S20	O.P.			
			S & G	Seasonal	Idaho Dept. of Highways District No. 6 P. O. Box 98 Rigby, Idaho 83442	067	Bonneville		T8N, R37E, S35	O.P.
						097	Bonneville		T1N, R37E, S9	O.P.
						033	Bonneville		T3N, R38E, S11	O.P.
052	Bonneville					T1N, R37E, S5	O.P.			
058	Bonneville					T2N, R37E, S35	O.P.			
059	Bonneville					T3N, R40E, S1	O.P.			
068	Bonneville					T2N, R37E, S35	O.P.			
071	Bonneville					T1N, R44E, S17	O.P.			
079	Bonneville					T3N, R40E, S6	O.P.			
084	Bonneville					T3N, R38E, S29	O.P.			
087	Bonneville					T2N, R37E, S26	O.P.			
100	Bonneville					T1N, R37E, S3	O.P.			
054	Bonneville					T3N, R39E, S5	O.P.			
111	Bonneville					T3N, R37E, S35	O.P.			
113	Bonneville					T3N, R38E, S15	O.P.			
122	Bonneville					T3N, R38E, S28	O.P.			
085	Bonneville					T3N, R38E, S17	O.P.			
123	Bonneville					T3N, R38E, S15	O.P.			
056	Clark					T9N, R36E, S9	O.P.			
032	Clark					T10N, R36E, S28	O.P.			
36	Clark		T9N, R33E, S20	O.P.						
040	Clark		T14N, R36E, S18	O.P.						
065	Fremont		T15N, R43E, S11	O.P.						

COMMODITY	STATUS	NAME	MINE	COUNTY	MEN	LOCATION	TYPE			
S & G	Seasonal	Idaho Dept. of Highways District No. 6 - Continued	19A	Fremont		T8N, R42E, S19	O.P.			
			033	Fremont		T7N, R40E, S12	O.P.			
			051	Fremont		T9N, R42E, S13	O.P.			
			052	Fremont		T8N, R43E, S17	O.P.			
			060	Fremont		T9N, R42E, S33	O.P.			
			072	Fremont		T13N, R42E, S12	O.P.			
			73	Fremont		T8N, R41E, S33	O.P.			
			071	Jefferson		T5N, R38E, S7	O.P.			
			077	Jefferson		T4N, R39E, S13	O.P.			
			078	Jefferson		T4N, R38E, S20	O.P.			
			074	Jefferson		T8N, R36E, S33	O.P.			
			081	Jefferson		T4N, R39E, S8	O.P.			
			080	Jefferson		T4N, R37E, S36	O.P.			
			083	Jefferson		T4N, R38E, S36	O.P.			
			116	Lemhi		T18N, R24E, S33	O.P.			
			111	Lemhi		T22N, R22E, S31	O.P.			
			123	Lemhi		T16N, R21E, S5	O.P.			
			130	Lemhi		T24N, R21E, S27	O.P.			
			096	Lemhi		T16N, R25E, S4	O.P.			
			116A	Lemhi		T18N, R24E, S33	O.P.			
			031A	Madison		T5N, R39E, S14	O.P.			
			033	Madison		T6N, R40E, S16	O.P.			
			029	Madison		T6N, R42E, S10	O.P.			
			041	Teton		T5N, R45E, S36	O.P.			
			040	Teton		T6N, R45E, S17	O.P.			
			032	Teton		T5N, R46E, S6	O.P.			
			033	Teton		T6N, R45E, S6	O.P.			
			036	Teton		T4N, R45E, S35	O.P.			
			S & G	Seasonal	Kootenai County Highway Dept. Coeur d'Alene, Idaho 83814		Kootenai		N of Port of entry on Hwy. 10	O.P.
							Kootenai		W of Kootenai County Air Terminal	O.P.
S & G	Seasonal	Lakes Highway District Box 669 Hayden Lake, Idaho 83835	Hayden Pit	Kootenai		T51N, R4W, S24	O.P.			

COMMODITY	STATUS	NAME	MINE	CCOUNTY	LOCATION	TYPE
S & G	Seasonal	Lemhi County Hwy. Dept. Salmon, Idaho 83467		Lemhi	Obtained from private sources	
S & G	Seasonal	Minidoka County Hwy. Dept. Rupert, Idaho 83350		Minidoka	T9S, R25E, S4	O.P.
S & G	Seasonal	Mountain Home Highway Department Mountain Home, Idaho 83647		Elmore Elmore	2 mi. NW of Mt. Home 2 mi. NE of Grandview	O.P.
S & G	Seasonal	Murtaugh Highway District Murtaugh, Idaho 83344		Cassia Cassia	1 mi. S of Murtaugh 4 mi. SE of Murtaugh	O.P. O.P.
S & G	Seasonal	Nez Perce County Engineer 805 26th Street North Lewiston, Idaho 83501	411	Nez Perce	T35N, R4W, S29	O.P.
			306	Nez Perce	T35N, R2W, S2	O.P.
			205	Nez Perce	T37N, R2W, S25	O.P.
			206	Nez Perce	T37N, R1W, S6	O.P.
			031866	Nez Perce	T36N, R4W, S9	O.P.
			308	Nez Perce	T35N, R2W, S11	O.P.
409	Nez Perce	T35N, R5W, S20	O.P.			
S & G	Seasonal	Payette County Hwy. Dept. Payette, Idaho 83661		Payette	1-1/2 mi. E of Hwy. 95 on Echo Ave.	O.P.
				Payette	2-1/2 miles S of Fruitland on Hwy. 95	O.P.
S & G	Seasonal	Plummer Gateway Highway District Plummer, Idaho 83851		Benewah	Off Hwy. 5	O.P.
S & G	Seasonal	Power Hwy. District No. 1 American Falls, Idaho 83211	Indian Pit	Power	Fort Hall Indian Res.-1 mi. S of Michaud Crossing & 15 mi. E of Am. Falls	O.P.

COMMODITY	STATUS	NAME	MINE	COUNTY	MEN	LOCATION	TYPE
S & G	Seasonal	Salmon, City of Box 770 Salmon, Idaho 83467		Lemhi	2	Salmon, Idaho	O.P.
S & G	Seasonal	Teton County Hwy. Dept. Driggs, Idaho 83422		Teton Teton Teton Teton Teton Teton		5 mi. W of Driggs 2-1/2 mi. S & W of Tetonia 4 mi. N & 2 mi. E of Driggs 3/4 mi. E of Driggs 1-1/2 mi. N of Victor 1-1/2 mi. SW of Victor	O.P. O.P. O.P. O.P. O.P. O.P.
S & G	Seasonal	U. S. Army Corps of Engineers Walla Walla District City-County Airport Walla Walla, Washington 99362 Attn: Mr. Carmichael		Clearwater Clearwater Nez Perce		T37N, R1E, S35 T40N, R4E, S12, 14 & 15 1 mi. E of Culdesac	O.P. O.P. O.P.
S & G	Seasonal	U. S. Forest Service Forest Service Building Ogden, Utah 84403		Cassia Cassia Fremont Valley		19-1/2 mi. S of Hanson on Rock Creek Road T13S, R19E, S20 T9N, R46E, S5 N junction of the Cascade Hwy. & the S fork of the Salmon River	O.P. O.P. O.P. O.P.

COMMODITY	STATUS	NAME	MINE	INSP.	COUNTY	MEN	LOCATION	TYPE
Stone	Active	Boise Stone & Tile 5106 Fairview Boise, Idaho 83704			Ada		5106 Fairview, Boise	Mill
Stone	Active	Idaho Portland Cement Co. Room 622 Old National Bank Bldg. Spokane, Washington 99205	Inkom Quarry	X	Bannock		T7S, R36E, S21 & 28 O.P.	
Stone	Active	Circle B Crushing Box 73 Fernwood, Idaho 83830	Milwaukee Pit	X	Benewah	3	1 mi. S of Fernwood O.P. on Hwy. 3	
Stone	Active	Materne Bros. Contractors 1204 W. Francis Spokane, Washington	State Pit BS-84S	X	Benewah	14	Near Plummer, Idaho O.P.	
Stone	Active	Idaho Travertine Corp. 3935 N. Yellowstone Hwy. Idaho Falls, Idaho 83402	Continental Buff	X	Bonneville	7	6 mi. SW of Swan Valley, Idaho	O.P.
Stone	Active	Monsanto Chemical Co. 800 N. Lindberg Blvd. St. Louis, Missouri 83166	Monsanto Quarry Operated: Wash. Const. Soda Springs, Ida.	X	Caribou	40	5 mi. N of Soda Springs on Hooper Road	O.P.
Stone	Active	Idaho Travertine Corp. 3935 N. Yellowstone Hwy. Idaho Falls, Idaho 83402	Continental Ivory	X	Clark	2	Near Continental Divide	O.P.
			Snow White Quarry		Clark	0	Near Dubois	O.P.
			Imperial Crystal		Clark	0	Near Dubois, Idaho	O.P.
Stone	Active	Treasure Canyon Calcium Co. 69 North 1 East Preston, Idaho 83263	Treasure Canyon Calcite		Franklin	3	33 mi. S of Grace on Hwy. 34	O.P. Plant

COMMODITY	STATUS	NAME	MINE	INSP.	COUNTY	MEN	LOCATION	TYPE
Stone	Active	Louisiana Pacific, Inc. 808 N. Boyer Sandpoint, Idaho	Chilco Pit	X	Kootenai	1	1-1/2 mi. N of Chilco & 1 mi. E, off Hwy. 95	O.P.
Stone	Active	Barnes, Inc. c/o Potlatch Ranger Station Route 1 - Box 4 Potlatch, Idaho	Bovill Quarry	X	Latah	3	1-1/2 mi. S of Bovill	O.P.
Stone	Active	Carl Carbon, Inc. P. O. Box 5153 Spokane, Washington 99205	Potlatch Pit	X	Latah	9	Near Potlatch	O.P.
Stone	Active	Crow Pock Products P. O. Box 66B Moscow, Idaho 83843	Deary Pit		Latah	0	5 mi. N of Troy	O.P.
Stone	Active	H & H Contractors Cunningham Street Grangeville, Idaho	Bovill Quarry	X	Latah	6	1-1/2 mi. S of Bovill	O.P.
Stone	Active	Carl Carbon, Inc. P. O. Box 5153 Spokane, Washington 99205	State LW-72	X	Lewis	10	1-1/2 mi. S of Craigmont	O.P.
Stone	Active	DeAtley Corporation Box 648 Lewiston, Idaho 83501	Mission Creek Quarry	X	Lewis	3	T34N, R3E	O.P.
Stone	Active	Boise Stone & Tile 5106 Fairview Boise, Idaho 83704	Aztec Pit Reynolds Creek Pit Antique Bronze Pit		Owyhee Owyhee Owyhee		SE of Marsing NW of Murphy SE of Marsing	O.P. O.P. O.P.
Stone	Inactive	Wells Cargo, Inc. P. O. Box 14037 Las Vegas, Nevada 89114	Pocatello Silica		Power	0	T7S, R34E, S6	O.P.
Stone	Active	J & J Construction P. O. Box 474 Spokane, Washington 99204	State SH-30	X	Shoshone	20	East edge of Pinehurst, Idaho	O.P.

COMMODITY	STATUS	NAME	MINE	INSP.	COUNTY	MEN	LOCATION	TYPE
Stone	Active	Bingham County Commrs. Blackfoot, Idaho 83221			Bingham Bingham		T4S, R40E, S9 T4S, R39E, S19	O.P. O.P.
Stone	Active	Bureau of Public Roads 412 Mohawk Bldg. 222 S.W. Morrison Portland, Oregon 97204			Camas Elmore		T1S, R12E, S10 T2S, R11E, S1	O.P. O.P.
Stone	Active	U. S. Forest Service Forest Service Bldg. Ogden, Utah 84403			Fremont Idaho		T9N, R46E, S5 T12N, R44E, S17	O.P. O.P.

COMMODITY	STATUS	NAME	MINE	INSP.	COUNTY	MEN	LOCATION	TYPE
GSLZ	Inactive	Butler Ore Company W. 2780 First Natl. Bank Bldg. St. Paul, Minnesota 55101	Red Ledge		Adams		Seven Devils mining district near Council	U.G.
GSLZ	Active	Silver King Mines, Inc. 1204 Deseret Bldg. Salt Lake City, Utah 84111	Copper Cliff	X	Adams	50	39 mi. N of Council near Cuprum	U.G. O.P.
GSLZ	Active	Neeser Construction Co. Box 234 McCammon, Idaho 83250	Belle Marsh Queen		Bannock	5	T8S, R36E, in Fort Hall mining district	U.G.
GSLZ	Inactive	Silco Mining Co., Inc. Route 1 South Pocatello, Idaho 83201	Fort Hall		Bannock	0	T7S, R35 E, in Fort Hall mining district	U.G.
GSLZ	Inactive	Sunset Mining Association Box 2 Grace, Idaho 83241	Sunset		Bear Lake	0	T15S, R43E, S5	U.G.
GSLZ	Inactive	Chimney Butte Mining Company LaBarge, Wyoming 83123	Frenchman		Blaine	0	Frenchman Creek, near Hailey	U.G.
GSLZ	Inactive	Cimarron Silver Mine Box 331 Ketchum, Idaho 83340	Cimarron Silver		Blaine	0	T4N, R17E, S29	U.G.
GSLZ	Inactive	Eureka Development Co., Ltd. 721 I Street Salt Lake City, Utah 84103	Red Elephant		Blaine	0	Near Hailey	U.G.
GSLZ	Inactive	Eugene Glahn 1337 2nd Avenue South Payette, Idaho 83661	Scorpion Extension		Blaine	0	T4N, R21E, S36	U.G.
GSLZ	Active	Hawaii National Corp. Box 1066 Hailey, Idaho 83333		X	Blaine	2	West of Grandview	U.G. Mill

COMMODITY	STATUS	NAME	MINE	INSP.	COUNTY	MEN	LOCATION	TYPE
GSLZ	Active	Idaho Exploration Co. Box 907 Hailey, Idaho 83333	Starter Group		Blaine		Near Hailey	U.G.
GSLZ	Active	Magdalena Mining Co. Box 69 Ketchum, Idaho 83340	Washington	X	Blaine	3	T3N, R17E, S33	U.G.
GSLZ	Inactive	Merger Mines, Inc. Box 716 Coeur d'Alene, Idaho 83814	Sunbeam		Blaine	0	Near Beaver Creek	U.G.
GSLZ	Inactive	The Mines, Inc. 509 Hays Street Boise, Idaho 83702	Rita Mae Group		Blaine	0	Mineral Hill mining U.G. district near Bellevue	
GSLZ	Inactive	Minidoka Mining Company Box 396 Rupert, Idaho 83350	Guy Lode		Blaine	0	Mineral Hill mining U.G. district near Hailey	
40 GSLZ	Active	Muldoon Barium Company Box 791 Hailey, Idaho 83333		X	Blaine	3	T3N, R22E, S12	U.G.
GSLZ	Inactive	Reed Mining Company Route 1 Jerome, Idaho 83338	Old Grandad		Blaine	0	T6N, R14E, S6 & 7	U.G.
GSLZ	Inactive	Silver Spar Mining Company R. W. Enderlin Box 1210 Alturas, California 96101	Silver Spar		Blaine		T3N, R21E, S3	U.G.
GSLZ	Inactive	Tri State Exploration, Inc. Suite 822, 68 S. Main Salt Lake City, Utah 84101	Boyles Mtn.		Blaine		T14N, R16E, S23 & 24	U.G.

COMMODITY	STATUS	NAME	MINE	INSP.	COUNTY	MEN	LOCATION	TYPE
GSCLZ	Active	Triumph Mineral Company c/o Rupert House Hailey, Idaho 83333	Triumph	X	Blaine	5	T4N, R18E, S25	U.G.
GSCLZ	Inactive	William Yancey P. O. Box 1142 Babbitt, Nevada 89416	Yancey		Blaine	0	T3N, R17E, S33, 34 & 35	U.G.
GSCLZ	Active	Bedal Bros. Box 222 Horseshoe Bend, Idaho 83629	Missouri	X	Boise	5	T8N, R5E, S27	U.G.
GSCLZ	Active	Boise Ridge Mining & Milling 2216 N. 35th Boise, Idaho 83703	Gold Hill	X	Boise	3	T7N, R4E, S9	O.P.
41 GSCLZ	Inactive	Canyon Creek Mining Co., Inc. 2235 Broadway Boise, Idaho 83706			Boise	0	T2N, R7E	U.G.
GSCLZ	Inactive	H. J. Casey 6339 N. E. Sandy Blvd. Portland, Oregon 97213	Ternan Belshazzar		Boise		6 mi. WSW of Placerville	U.G.
GSCLZ	Inactive	Come Back Mining Co. c/o Louis F. Truger Idaho City, Idaho 83631	Come Back		Boise		T8N, R5E, S26 & 27	U.G.
GSCLZ	Inactive	Edward A. Gill Box 103 Idaho City, Idaho 83631	Come Back		Boise		T8N, R5E	U.G.
GSCLZ	Inactive	Golden Age Mining Properties, Inc. 984 Rosewood East Lansing, Michigan 48823	Golden Age		Boise	0	Pioneerville, Idaho	U.G.
GSCLZ	Inactive	H, H & R Exploration & Develop. 1219 Maple Nampa, Idaho 83651	Morning Star		Boise	0	Grimes Pass in Pioneerville mining district	U.G.

COMMODITY	STATUS	NAME	MINE	INSP.	COUNTY	MEN	LOCATION	TYPE
GSCLZ	Inactive	King Lodes, Inc. 1911 Euclid Boise, Idaho 83706	King		Boise	0	Summit Flat mining district near Idaho City	U.G.
GSCLZ	Inactive	LaFlora Mining Co., Inc. 359 Lantana St. Camarillo, Calif. 93010	LaFlora		Boise	0	Near Idaho City	U.G.
GSCLZ	Inactive	Morning Mist Mining Corp. 6712 Hummel Boise, Idaho 83705			Boise	0	T5N, R5E	O.P.
GSCLZ	Inactive	Natl. Mining & Develop. Co., Ltd. c/o Harry Palmer Idaho City, Idaho 83631	Mtn. Chief		Boise	0	Near Placerville	U.G.
42 GSCLZ	Inactive	Silver Chief Mining Company 836 La Cassia Drive Boise, Idaho 83705	Banner Silver Chief		Boise	0	T8N, R8E, S20	U.G.
GSCLZ	Active	Welker & Hutton Pioneerville, Idaho	Blackbird	X	Boise	4	T8N, R5E, S13	U.G.
GSCLZ	Inactive	G. M. Whitney General Delivery Lowman, Idaho 83637	Specimen		Boise		T9N, R8E	U.G.
GSCLZ	Inactive	Wolverine Development Co. 1481 Blaine Ave. Salt Lake City, Utah 84105	Silver Chief		Boise	0	T8N, R8E	U.G.
GSCLZ	Inactive	Auxer Gold Mines, Inc. Box 488 Coeur d'Alene, Idaho 83814			Bonner	0	T57N, R2E	U.G.
GSCLZ	Inactive	Binarch Creek Mining Co. E. 609 Crown Ave. Spokane, Washington 99207			Bonner	0	T59N, R5S, S12	U.G.

COMMODITY	STATUS	NAME	MINE	INSP.	COUNTY	MEN	LOCATION	TYPE
GSCLZ	Inactive	Conjecture Mines, Inc. Box 488 Coeur d'Alene, Idaho 83814	Conjecture		Bonner	0	T53N, R1W, S26	U.G.
GSCLZ	Inactive	Idaho Lakeview Mines Co. Box 272 Spokane, Washington 99210	Idaho Lakeview		Bonner	0	Near Bayview, Idaho	U.G.
GSCLZ	Inactive	Iron Mask Mining Co., Inc. Route 1, Box 478 Sandpoint, Idaho 83864	Iron Mask		Bonner	0	T56N, R2W	U.G.
GSCLZ	Inactive	Kaniksu American Mining Co. Box 307 Clark Fork, Idaho 83811			Bonner	0	Clark Fork, Idaho	U.G.
43 GSCLZ	Inactive	Kaniksu Mining Co., Inc. 1508 W. Broadway Spokane, Washington 99201	Kaniksu Mines		Bonner	0	T60N, R4W	U.G.
GSCLZ	Inactive	Milwaukee Mines, Inc. E. 609 Crown Ave. Spokane, Washington 99207			Bonner	0	Near Priest River	U.G.
GSCLZ	Inactive	Plume Creek Silver Mines, Inc. Box 162 Clark Fork, Idaho 83811	Plume Creek		Bonner		T56N, R2E	U.G.
GSCLZ	Inactive	Silver Butte Mining Co. P. O. Box 711 Sandpoint, Idaho 83864	Silver Butte		Bonner		T55N, R1W, S1 T56N, R2W, S31 & 36	U.G. U.G.
GSCLZ	Inactive	Silverfields Corp. Box 298 Kellogg, Idaho 83837	Silverfields		Bonner	0	T55N, R2E, S1	U.G.
GSCLZ	Inactive	Union Carbide Corp. 270 Park Ave. New York, N. Y. 10017			Bonner	0	T52 & 53N, R1W	U.G.

COMMODITY	STATUS	NAME	MINE	INSP.	COUNTY	MEN	LOCATION	TYPE
GSCLZ	Inactive	Big T Mines Incorporated Box 368 Bonners Ferry, Idaho 83805	Big T		Boundary	0	Copper Creek, Idaho	U.G.
GSCLZ	Inactive	Eagle American Mines, Inc. Box 183 Sandpoint, Idaho 83864			Boundary	0	T60N, R2E	U.G.
GSCLZ	Inactive	Hall Mtn. Silver Mines, Inc. Box 142 Clark Fork, Idaho 83811	Lucky Charlie Group		Boundary	0	T37N, R1E	U.G.
GSCLZ	Inactive	Kootenai Copper Silver Mines, Inc. 1022 East 28th Spokane, Washington 99203			Boundary	0	Moyie Yaak mining district	U.G.
44 GSCLZ	Inactive	Montgomery Mines Box 488 Coeur d'Alene, Idaho 83814	Montgomery		Boundary	0	T65N, R1E	U.G.
GSCLZ	Inactive	P & B Silver Mines, Inc. Box 21 Porthill, Idaho 83853	Idaho- Continental		Boundary	0	T64N, R4W	U.G.
GSCLZ	Inactive	Carwin J. Kimball 6285 Lillian Way San Jose, California 95120	Low Boy		Butte	0	T3N, R23E, S13	U.G.
GSCLZ	Inactive	Low Boy Mining Group Box 116 Arco, Idaho 83213			Butte	0	T3N, R23E	O.P.
GSCLZ	Inactive	Luscomb Mining Corp. 2215 Manitou Boise, Idaho 83706	Luscomb		Butte	0	Near Howe, Idaho	U.G.
GSCLZ	Inactive	Ultican Minerals Ltd. 1414 E. Jefferson Boise, Idaho 83702	Johnson Prospect		Butte		Dome mining district	U.G.

COMMODITY	STATUS	NAME	MINE	INSP.	COUNTY	MEN	LOCATION	TYPE
GSCLZ	Inactive	Golden Arrow Mining Co. 2708 N. Fry Boise, Idaho 83704	Golden Arrow		Camas	0	Little Smoky mining district	U.G.
GSCLZ	Inactive	U. S. Silver & Mining Co. Mackay, Idaho 83251	Silver Star		Camas		T3N, R15E, S18	U.G.
GSCLZ	Inactive	Birch Creek Mining Co., Ltd. Box 156 Idaho Falls, Idaho 83401	Scott		Clark	0	Birch Creek, NW of Roberts	U.G.
GSCLZ	Inactive	Century Silver Mines, Inc. Box 1088 Wallace, Idaho 83873	Century Silver		Clark	0	Red Mountain mining district	U.G.
GSCLZ	Active	Jeppeson & Mitchell Route 1 - Box 242 Idaho Falls, Idaho 83401	Rainbow Hill	X	Clark	2	T9N, R32E, S30 T10N, R30E, S26 & 34	U.G.
45 GSCLZ	Inactive	Spanallen Mining Ltd. 149 E. 15th Street North Vancouver, B. C., Canada	Hill No. 3		Clark	0	50 mi. from Dubois	O.P.
GSCLZ	Inactive	Joe Ausich Box 61 Mackay, Idaho 83251	Champion Group		Custer		Alder Creek mining district	U.G.
GSCLZ	Inactive	Beardsley Gulch Mining Co. Room 206 1355 Foothill Drive Salt Lake City, Utah 84108	K-7		Custer	0	T13N, R18E, S35	U.G.
GSCLZ	Active	Clayton Silver Mines Box 890 Wallace, Idaho 83873	Clayton	X	Custer	15	T11N, R17E	U.G.
GSCLZ	Inactive	Heavy Metals, Inc. Box 56 Stanley, Idaho 83278	Enterprise		Custer		T14N, R11E	U.G.

---

COMMODITY	STATUS	NAME	MINE	INSP.	COUNTY	MEN	LOCATION	TYPE
GSCLZ	Active	Honolulu Copper Company, Inc. Leased to: Ivie Mining Co. P. O. Box 32 Mackay, Idaho 83251	Empire	X	Custer	6	T6N, R23E, S3	U.G.
GSCLZ	Active	Hoodoo Mining Corp. 6065 Highland Drive Salt Lake City, Utah 84121	Hoodoo	X	Custer	26	T10N, R15E, S25	U.G.
GSCLZ	Inactive	Lee Hopkins Route 3 Meridian, Idaho 83642	Mountain King		Custer	0	T15N, R11E, S29	U.G.
GSCLZ	Inactive	Ivers Mining Co. 810 Tribune Bldg. Salt Lake City, Utah 84111	Lost Packer		Custer	0	T15N, R11E, S28	U.G.
46 GSCLZ	Active	Longyear Drilling Co. Box 62 Clayton, Idaho 83227	Thompson Creek Project	X	Custer	6	Head of Thompson Creek, W of Clayton	U.G.
GSCLZ	Inactive	Myko, Inc. c/o Ivan Taylor Mackay, Idaho 83251	Empire		Custer		Alder Creek mining district	U.G.
GSCLZ	Inactive	Clifford Pierce Clayton, Idaho 83227	Copper Lode		Custer	0	T7N, R23E	U.G.
GSCLZ	Inactive	Ramshorn Mines Co. 20 E. 2nd South Salt Lake City, Utah 84111	Ramshorn		Custer	0	Near Challis	U.G.
GSCLZ	Inactive	Silver Lamb Mining Corp. Box 44 Sun Valley, Idaho 83353	Pilot Beecher		Custer	0	Yankee Fork mining district	U.G.
GSCLZ	Inactive	Sink Creek Mining Co. Route 3 - Box 170C Blackfoot, Idaho 83221			Custer	0	Near Clayton	U.G.

COMMODITY	STATUS	NAME	MINE	INSP.	COUNTY	MEN	LOCATION	TYPE
GSCLZ	Inactive	U. S. Antimony Corp. Box 643 Thompson Falls, Montana 59873	Estes Mtn.		Custer	0	Near Sunbeam, Idaho	U.G.
GSCLZ	Inactive	Washington Peak Mining Co. Box 354 Rexburg, Idaho 83440	Black Rock Black Jack		Custer	0	East Fork mining district	U.G.
GSCLZ	Inactive	Golden Sunrise Mining Co. 1624 Manitou Boise, Idaho 83706	Spanish Town		Elmore	0	T10E, R4N near Rocky Bar	U.G.
GSCLZ	Inactive	Idaho Gold Chief Mining Co. Box 51 Mt. Home, Idaho 83647	Idaho Gold Chief		Elmore	0	Near Rocky Bar, in Bear Creek mining district	U.G.
47 GSCLZ	Inactive	Little Queen Mines, Inc. Box 1088 White Salmon, Washington 98672	Little Queen		Elmore		T7N, R11E, S15	U.G.
GSCLZ	Inactive	Charles Martin Box 493 Burley, Idaho 83318	Ophir Group		Elmore	0	T4N, R10E	O.P.
GSCLZ	Inactive	Earl Moosman Atlanta, Idaho 83601	Tahoma		Elmore	0	Near Atlanta in Quartz Gulch	U.G.
GSCLZ	Inactive	E. T. Seaton Box 151 Atlanta, Idaho 83601	Golden Stringer		Elmore		T5N, R11E, S15	U.G.
GSCLZ	Inactive	Hecla Checkmate Mng. & Develop. 2125 Central N.W. Albuquerque, New Mexico 87104	Hecla- Checkmate		Gem	0	Westview mining district near Emmett	U.G.
GSCLZ	Inactive	Amador Gold & Silver Mng. Co. Box 102 Silverton, Idaho 83867			Idaho	0	Florence mining district	U.G.

COMMODITY	STATUS	NAME	MINE	INSP.	COUNTY	MEN	LOCATION	TYPE
GSCLZ	Inactive	Appoilo Gold Mines, Inc. Box 519 Coeur d'Alene, Idaho 83814	Appollo Gold		Idaho	0	Elk City, Idaho	U.G.
GSCLZ	Inactive	Bullion Lode Silver Mng. Co. East 1711 Trent Spokane, Washington 99202	Bullion Lode Silver		Idaho	0	T25N, R4E, S33	O.P.
GSCLZ	Inactive	Center Star Gold Mines, Inc. Box 506 Elk City, Idaho 83873	Center Star		Idaho		T29N, R7E, S35	U.G.
GSCLZ	Inactive	EXPL0, Inc. Box 327 Cottonwood, Idaho 83522			Idaho	0	Cottonwood, Idaho	U.G.
48 GSCLZ	Active	Idaho Rand, Inc. Box 487 McCall, Idaho 83638	Rescue	X	Idaho	2	T22N, R6E	U.G.
GSCLZ	Inactive	Jongault Mines, Inc. Box 327 Elk City, Idaho 83525	Col. Sellers		Idaho	0	T29N, R8E	U.G.
GSCLZ	Inactive	Kimberly Gold Mines, Inc. Box 62 Tacoma, Washington 98401			Idaho	0	T24N, R5E	U.G.
GSCLZ	Inactive	Bruno Krause Florence, Idaho	Ozark Ext.		Idaho		1-1/2 mi. N of Florence	U.G.
GSCLZ	Inactive	Morse Mining Co. Box 44 Greenleaf, Idaho 83626	Lone Pine		Idaho		T29N, R6E	U.G.
GSCLZ	Inactive	Old Channel Placers, Inc. Star Route Grangeville, Idaho 83530	Moose Creek		Idaho	0	On Allison Creek	U.G.

COMMODITY	STATUS	NAME	MINE	INSP.	COUNTY	MEN	LOCATION	TYPE
GSCLZ	Inactive	Ernest P. Patterson Orogrande Route Elk City, Idaho 83525	South Fork		Idaho	0	T28N, R8E	U.G.
GSCLZ	Inactive	Roy Powell Florence, Idaho	Lorain		Idaho	0	2 mi. N of Florence	O.P.
GSCLZ	Inactive	Earl Rice Box 517 Elk City, Idaho 83525	Daisy		Idaho		T28N, R8E	O.P.
GSCLZ	Inactive	Sungold Mines, Inc. 322 13th Avenue Lewiston, Idaho 83501	Sungold		Idaho	0	Orogrande mining district near Golden	U.G.
GSCLZ	Inactive	Joe Swisher & Lowell Messley c/o Joe Swisher 3609 14th Street Lewiston, Idaho 83501	Little Moose		Idaho	0	T28N, R6E, S12	U.G.
GSCLZ	Inactive	United Gold & Silver, Inc. 237 Peyton Bldg. Spokane, Washington 99202	Waverly Lode Yakima		Idaho	0	T24N, R3E	U.G.
GSCLZ	Inactive	Virginia City Gold Mines, Inc. W. 3337 Woodside Spokane, Washington 99208			Idaho	0	Near Elk City	U.G.
GSCLZ	Inactive	War Eagle Mining Co., Inc. Route 1 - Roe St. Boise, Idaho 83702	War Eagle		Idaho		T23N, R5E in Warren mining district	U.G.
GSCLZ	Inactive	Little Joe Mining Co. 708 N. 15th Coeur d'Alene, Idaho 83814			Kootenai	0	T52N, R1W	U.G.
GSCLZ	Inactive	Magnum Tin Corp. Box 1003 Coeur d'Alene, Idaho 83814	Magnum Tin		Kootenai	0	T49N, R2W	U.G.

COMMODITY	STATUS	NAME	MINE	INSP.	COUNTY	MEN	LOCATION	TYPE
GSCLZ	Inactive	Merger Mines Corp. Box 716 Coeur d'Alene, Idaho 83814	Cedar Mt.		Kootenai	0	T52N, R3W	U.G.
GSCLZ	Inactive	Mint Grade Mining Co. E. 1711 Trent Spokane, Washington 99202			Kootenai	0	T52N, R2W	O.P.
GSCLZ	Inactive	Silver Strand Mining Co. 311 Main Kellogg, Idaho 83837	Silver Strand		Kootenai		T51N, R1 & 2W	U.G.
GSCLZ	Inactive	Union Carbide Corp. 270 Park Ave. New York, N. Y. 10017			Kootenai	0	T52 & 53N, R1W	U.G.
50 GSCLZ	Inactive	Calbar Co. 914 Walker Bank Bldg. Salt Lake City, Utah 84111	California Bar		Lemhi	0	Mackinaw mining district	O.P.
GSCLZ	Inactive	Wayne Clutis Box 531 Challis, Idaho 83226	Singheiser		Lemhi		Meyers Cove	U.G.
GSCLZ	Inactive	Gold Canyon Mining Co., Inc. 772 Birch Pocatello, Idaho 83201	Lady May		Lemhi	0	50 miles N of Howe	O.P.
GSCLZ	Inactive	Gold Producers, Inc. c/o A. R. McLean E. 124 Hawthorne Road Spokane, Washington 99218	Grunter		Lemhi		Near Shoup, Idaho	U.G.
GSCLZ	Active	Grandview Metals Box 7413 Salt Lake City, Utah 84107	Pope-Shenon	X	Lemhi	4	T20N, R22E, S9	U.G.

COMMODITY	STATUS	NAME	MINE	INSP.	COUNTY	MEN	LOCATION	TYPE
GSCLZ	Inactive	Idaho Consolidated Mines, Inc. Bldg. 327, S. Comp. Paine Field Everett, Washington 98204	Idaho Consolidated		Lemhi	0	T19N, R21E, S20	U.G.
GSCLZ	Inactive	Idaho Mining Company Box 514 Cobalt, Idaho 83229	Blackbird No. 2		Lemhi		T21N, R18E, near Cobalt	U.G.
GSCLZ	Inactive	Kenney Nuclear & Western Silver Box 52 Salmon, Idaho 83467	Kenney Nuclear		Lemhi	0	On Kenney Creek, 35 mi. SE of Salmon	U.G.
GSCLZ	Inactive	Leesburg Lode & Placer Mng. Co. 105 Harvard Avenue East Seattle, Washington 98102			Lemhi	0	Near Leesburg	U.G.
15 GSCLZ	Active	Merger Mine Corp. Box 716 Coeur d'Alene, Idaho 83814	Cyanide Gulch	X	Lemhi	3	T26N, R21E	U.G.
GSCLZ	Active	Monida Nuclear Fuel & Silver Mines, Inc. Box 791 Blackfoot, Idaho 83221	Ramshorn	X	Lemhi	5	T17N, R25E, S22	U.G.
GSCLZ	Inactive	Quantex Corp. 2330 S. Main - Suite 9 Salt Lake City, Utah 84115	Singiser		Lemhi		T18N, R18E	U.G.
GSCLZ	Inactive	Salmon Canyon Copper Co. Box 891 Jamestown, North Dakota 58401	Salmon Canyon		Lemhi	2	T23N, R15E, S26	U.G.
GSCLZ	Inactive	Silver Pick Mining Co. Terreton, Idaho 83450	Silver Bell		Lemhi		Near Leadore, Idaho	U.G.
GSCLZ	Inactive	Hugo A. Simi Cobalt, Idaho 83229	Tin Cup		Lemhi	1	T19N, R16E	U.G.

COMMODITY	STATUS	NAME	MINE	INSP.	COUNTY	MEN	LOCATION	TYPE
GSCLZ	Inactive	William Steen Box 100 Cobalt, Idaho 83229	Yellow Jacket		Lemhi		T19N, R16E	U.G. O.P.
GSCLZ	Inactive	T & B Mining Box 98 Iona, Idaho 83427	Silver Moon	X	Lemhi	2	T13N, R27E, S29	U.G.
GSCLZ	Inactive	Universal Exploration Box 98 Iona, Idaho 83427	Silver Moon		Lemhi			U.G.
GSCLZ	Inactive	Jett Ward Box 161 Salmon, Idaho 83467	Gem		Lemhi	0	T21N, R24E	U.G.
52 GSCLZ	Inactive	Century Silver Mines, Inc. Box 1088 Wallace, Idaho 83873			Lewis	0		U.G.
GSCLZ	Inactive	Copper Spring Mining Co., Inc. 206 Wood St. Waitsburg, Washington 99361	Copper Springs		Nez Perce	0	T29N, R3 & 4W	U.G.
GSCLZ	Inactive	Banner Mining & Milling Co. 2416 Grant Boise, Idaho 83706			Owyhee	0	Carson mining district near Murphy	U.G.
GSCLZ	Active	W. A. Bowes 917 Lincoln Steamboat Springs, Colorado 80477	South Mtn.	X	Owyhee	5	T8S, R5W	U.G.
GSCLZ	Inactive	Carson Divide Mining Co. Box 56 Murphy, Idaho 83650	Rich Gulch		Owyhee	0	T5S, R4W	U.G.
GSCLZ	Active	Earth Resources Co. 5920 McIntyre Golden, Colorado 80401	Delamar Mtn. Florida Mtn.	X X	Owyhee		T4 & 5S, R4W T4 & 5S, R3 & 4W	O.P. O.P.

COMMODITY	STATUS	NAME	MINE	INSP.	COUNTY	MEN	LOCATION	TYPE
GSCLZ	Inactive	Empire Mines Co. 2416 Grant Boise, Idaho 83706			Owyhee	0	Carson mining dis- trict	U.G.
GSCLZ	Inactive	Glen Silver Mining Corp. Route 1 - Box 111A Nyssa, Oregon 97913	Glen Silver		Owyhee	0	T4S, R4W	U.G.
GSCLZ	Inactive	Mine Finder, Inc. 9833 W. 67th Place Golden, Colorado 80402			Owyhee	0	T4S, R5W	U.G.
GSCLZ	Inactive	Sidney Mining Co. Box 1049 Kellogg, Idaho 83837	Cop & Cook Group		Owyhee	0	T4 & 5S, R4W	U.G.
GSCLZ	Inactive	Silver Enterprise Mining Corp. Box 163 Payette, Idaho 83661			Owyhee	0	Near Silver City	U.G.
GSCLZ	Inactive	Silver Soldier, Inc. 211 East Ash Caldwell, Idaho 83605	Copper King		Owyhee		25 mi. S of Jordan Valley on Soldier Creek	U.G.
GSCLZ	Active	Superior Mining Co. Box 385 Spokane, Washington 99210	Milestone Lucky Day Mary Group		Owyhee	3	T4S, R4 & 5W	U.G.
GSCLZ	Inactive	Bannock Apex Mines, Inc. Box 172 American Falls, Idaho 83211	Bannock Apex		Power	0	T10S, R31E	
GSCLZ	Inactive	Aberdeen Idaho Mining Co. Scott Building Wallace, Idaho 83873			Shoshone	0	Yreka mining dis- trict. Work done by Bunker Hill Co.	U.G.
GSCLZ	Inactive	Abot Mining Company Box 1010 Wallace, Idaho 83873			Shoshone	0	T48N, R5E	U.G.

COMMODITY	STATUS	NAME	MINE	INSP.	COUNTY	MEN	LOCATION	TYPE	
GSCLZ	Inactive	Alice Consolidated Mines, Inc. Scott Bldg. Wallace, Idaho 83873			Shoshone	0	Hunter mining district	U.G.	
GSCLZ	Inactive	Allied Silver Lead Co. 120 Earle St. Mullan, Idaho 83846			Shoshone	0	Hunter mining district	U.G.	
GSCLZ	Inactive	American Silver Mining Co. S. 4114 Lamont St. Spokane, Washington 99203	American Silver		Shoshone	0	Evolution mining district near Osburn	U.G.	
54	Active	American Smelting & Refining Co. Box 440 Wallace, Idaho 83873	Co. Morning Shop	X	Shoshone	10	Mullan, Idaho	Shop	
			Caladay-Owner:	X	Shoshone	28	T48N, R4E, S34	U.G.	
			Callahan						
			Coeur Project	X	Shoshone	22	T48N, R4E, S19 & 24	U.G.	
			Galena-Owner:	X	Shoshone	244	T48N, R4E, S23 & 29	U.G.	
		Callahan							
		Mace (Inactive)			Shoshone	0	T48N, R5E	U.G.	
		Frisco (Inactive)			Shoshone	0	T48N, R5E	U.G.	
		Page (Inactive)			Shoshone	0	T48N, R2E	U.G.	
GSCLZ	Inactive	Anaconda Company 25 Broadway New York, N. Y. 10004	Sunset		Shoshone	0	Beaver & Summit mining districts	U.G.	
GSCLZ	Active	Asher Leasing Co. Box 14 Silverton, Idaho 83873	Asher Lease	X	Shoshone	6	Wardner, Idaho	U.G.	
GSCLZ	Inactive	Atlas Mining Co. E. 34 High Drive Spokane, Washington 99203	Atlas		Shoshone	0	T47N, R6E, S6 T47N, R5E, S1 & 2	U.G. U.G.	
GSCLZ	Active	Bailey Leasing Company Box 660 Kellogg, Idaho 83837	Bailey Lease	X	Shoshone	5	Located on upper level of Bunker Hill mine at Wardner	U.G.	

COMMODITY	STATUS	NAME	MINE	INSP.	COUNTY	MEN	LOCATION	TYPE
GSCLZ	Inactive	Baird Sullivan Mining Co. 7370 Hawthorne Avenue Hollywood, California 90046	Sullivan		Shoshone	0	Near Wallace	U.G.
GSCLZ	Inactive	Banner Idaho Mines, Inc. E. 34 High Drive Spokane, Washington 99203	Banner-Idaho		Shoshone	0	Near Mullan	U.G.
GSCLZ	Inactive	Beacon Light Mining Co. Box 609 Wallace, Idaho 83873	Beacon Light		Shoshone	0	T47 & 48N, R6E, S3, 4, 5, 32, 33, & 34	U.G.
GSCLZ	Inactive	Bell Mining Company Scott Bldg. Wallace, Idaho 83873	Bell		Shoshone	0	Lelande mining district near Wallace	U.G.
GSCLZ	Inactive	Benton Mining Co. Scott Bldg. Wallace, Idaho 83873			Shoshone	0	Lelande mining district. Operating agreement with Silver Dollar Mng. Co.	U.G.
GSCLZ	Inactive	Big Creek Apex Mining Co. Box 890 Wallace, Idaho 83873	Big Creek Apex		Shoshone	0	Mining operations performed by Sunshine Mng. Co.	U.G.
GSCLZ	Inactive	Bismarck Mining Co. Box 1080 Kellogg, Idaho 83837	Bismarck		Shoshone	0	T48N, R3E	U.G.
GSCLZ	Inactive	Black Bear Mines Company Scott Bldg. Wallace, Idaho 83873	Black Bear		Shoshone	0	Lelande mining district	U.G.
GSCLZ	Inactive	Blackhawk Mng. & Develop.Co. Box 440 Wallace, Idaho 83873			Shoshone	0	T48N, R2E	U.G.
GSCLZ	Inactive	Blue Eagle Mining Co. Box 970 Coeur d'Alene, Idaho 83814	Blue Eagle		Shoshone	0	Yreka mining district near Pinehurst	U.G.

55

COMMODITY	STATUS	NAME	MINE	INSP.	COUNTY	MEN	LOCATION	TYPE
GSCLZ	Inactive	Bonanza Gold, Inc. E. 15 Walton Ave. Spokane, Washington 99207			Shoshone	0	T48N, R3E, and T47N, R3E	U.G.
GSCLZ	Inactive	Border Silver Mines, Inc. Scott Bldg. Wallace, Idaho 83873			Shoshone	0	Hunter mining district near Mullan	U.G.
GSCLZ	Inactive	Boulder Creek Mining Co. Scott Bldg. Wallace, Idaho 83873	Boulder Creek		Shoshone	0		U.G.
GSCLZ	Inactive	Buckskin Gold & Silver, Inc. Scott Bldg. Wallace, Idaho 83873			Shoshone	0		U.G.
GSCLZ	Inactive	Bullion Mining Co. 133 King St. Wallace, Idaho 83873			Shoshone	0	T47N, R6 & 7E	U.G.
GSCLZ	Inactive	Bunker Chance Mining Co. Box 605 Page, Idaho 83850	Bunker Chance		Shoshone	0	Exploration agree- ment with the Bunker Hill Co.	U.G.
GSCLZ	Active	The Bunker Hill Company P.O. Box 29 Kellogg, Idaho 83837	Bunker Hill	X	Shoshone	533	T48N, R2E, S1, 2, 11 & 12	U.G.
			Crescent	X	Shoshone	68	T48N, R3E, S6 & 17	U.G.
			Royal Apex	X	Shoshone		T48N, R3E, S35	U.G.
			Star Morning- Oper: Hecla	X	Shoshone		T48N, R2E, S21	U.G.
			Mill-Surface	X	Shoshone	142		
GSCLZ	Inactive	Burke Mining Co. Scott Bldg. Wallace, Idaho 83873			Shoshone	0	Lelande mining district	U.G.
GSCLZ	Active	CSC Mining Co. Box 1086 Wallace, Idaho 83873	Morning #6 Alice Con.	X	Shoshone	2	Near Mullan	U.G.

COMMODITY	STATUS	NAME	MINE	INSP.	COUNTY	MEN	LOCATION	TYPE
GSCLZ	Inactive	Caledonia Mining Co. Box 29 Kellogg, Idaho 83837	Caledonia		Shoshone	0	T48N, R2E in Yreka mining district	U.G.
GSCLZ	Inactive	Caledonia Silver-Lead Mng. Co. 116 McKinley Avenue Kellogg, Idaho 83837			Shoshone	0		U.G.
GSCLZ	Inactive	Callahan Consolidated Mines, Inc. Scott Bldg. Wallace, Idaho 83873			Shoshone	0	Lelande mining district	U.G.
GSCLZ	Active	Callahan Mining Corp. P. O. Box 905 Osburn, Idaho 83849	Caladay Project- Oper: ASARCO Galena-Oper: ASARCO	X	Shoshone		T48N, R4E, S34	U.G.
GSCLZ	Active	Canyon Silver Mines, Inc. P. O. Box 862 Wallace, Idaho 83873	Canyon Silver	X	Shoshone	10	T48N, R4E, S19	U.G.
GSCLZ	Inactive	Capitol Silver Mines, Inc. Scott Bldg. Wallace, Idaho 83873			Shoshone	0	Evolution and Beaver mining districts	U.G.
GSCLZ	Inactive	Central Mining Co. Box 82 Burke, Idaho 83807	Central		Shoshone	0	Lelande mining district	U.G.
GSCLZ	Inactive	Champion Gold & Silver W. 606 Third Ave. Spokane, Washington 99204			Shoshone		Coeur d'Alene mining district	U.G.
GSCLZ	Active	Chester Mining Company Box 320 Wallace, Idaho 83873	Chester	X	Shoshone		Mining done by Sunshine Mng. Co.	U.G.
GSCLZ	Active	Chris Christopherson Box 365 Murray, Idaho 83874	Christopherson	X	Shoshone	2	Murray, Idaho	U.G.

COMMODITY	STATUS	NAME	MINE	INSP.	COUNTY	MEN	LOCATION	TYPE
GSCLZ	Inactive	Cities Service Minerals Corp. 621 Kearns Bldg. Salt Lake City, Utah 84101	Copper Hill		Shoshone	0	T50N, R5E	U.G.
GSCLZ	Inactive	Clearwater Mines, Inc. 3415 East Terrace Seattle, Washington 98122	Clearwater		Shoshone	0	T12N, R10E	U.G.
GSCLZ	Inactive	Coeur d'Alene Crescent Mng. Co. Scott Bldg. Wallace, Idaho 83873	Evolution		Shoshone	0	Evolution mining district	U.G.
GSCLZ	Active	Coeur d'Alene Mines Corp. Box 889 Wallace, Idaho 83873	Coeur	X	Shoshone	0	Operated by ASARCO T48N, R3 & 4E	U.G.
GSCLZ	Inactive	Coeur d'Alene Mining Co. c/o Tyler & Reynolds 1 Court Street Boston, Mass. 02108			Shoshone	0	Coeur d'Alene and Summit mining districts	O.P.
GSCLZ	Inactive	Coeur d'Alene Premier Mng. Co. Scott Bldg. Wallace, Idaho 83873			Shoshone	0		U.G.
GSCLZ	Inactive	Coeur d'Alene Silver & Gold c/o Ralph Hemphill Delta, Idaho			Shoshone			U.G.
GSCLZ	Inactive	Coeur d'Alene Syndicate Mining 555 So. Flower, 37th Floor Los Angeles, Calif. 90071	Flynn Group		Shoshone	0	T48N, R5E	U.G.
GSCLZ	Inactive	Commonwealth Silver, Inc. 547 Peyton Bldg. Spokane, Washington 99201	Hayden Creek Hunter Creek		Shoshone	0 0	T52N, R3W T47N, R2E	U.G. U.G.
GSCLZ	Active	Consolidated Silver Corp. Box 320 Wallace, Idaho 83873	Silver Summit- Oper: Hecla	X	Shoshone		T48N, R3E, S23	U.G.

COMMODITY	STATUS	NAME	MINE	INSP.	COUNTY	MEN	LOCATION	TYPE
GSCLZ	Inactive	Consolidated Silver Corp. Box 320 Wallace, Idaho 83873	Silver Summit	X	Shoshone		T48N, R3E. Operated by Hecla Mng. Co.	U.G.
GSCLZ	Inactive	Constitution Mining Co. Scott Bldg. Wallace, Idaho 83873	Constitution		Shoshone	0	T47N, R2E, S11	U.G.
GSCLZ	Inactive	Cougar Silver Mining Co. N. 4703 Maple St.-Suite 230 Spokane, Washington 99208	Cougar Silver		Shoshone	0	T48N, R2E, S27	O.P.
GSCLZ	Inactive	Cuba Mining Co. Scott Bldg. Wallace, Idaho 83873			Shoshone	0	North of Wallace	U.G.
59 GSCLZ	Active	Day Mines, Inc. P. O. Box 1010 Wallace, Idaho 83873	Dayrock Monitor (Inactive) Parrot (Inactive) Mt. Goat (Inactive) Sherman (Inactive) Stanley Silver Star-Owner: Silver Star Mng. (Inactive)	X	Shoshone	58	T48N, R4E, S11 & 14 T49N, R5E, S31 & 32 T49N, R5E, S29 T49N, R5E, S30 T48N, R5E, S9 .2 mi. W of Burke T48N, R4E, S14 & 15	U.G. U.G. U.G. U.G. U.G. U.G.
GSCLZ	Active	Diamond Drill Contractors Eagle, Idaho	Copper Hill	X	Shoshone	6	Near Eagle, Idaho	U.G.
GSCLZ	Inactive	Dobson Pass Lead & Silver Mines Box 1025 Kellogg, Idaho 83837	Dobson Pass		Shoshone	0	T48N, R4E	U.G.
GSCLZ	Inactive	Douglas Mining Co. P. O. Box 29 Kellogg, Idaho 83837	Douglas		Shoshone	0	T47N, R2E, S3	U.G.

COMMODITY	STATUS	NAME	MINE	INSP.	COUNTY	MEN	LOCATION	TYPE
GSCLZ	Active	Earth Resources Co. 5920 McIntyre Golden, Colorado 80401	Copper Hill Niagara 57	X X	Shoshone Shoshone		T50N, R5E, S9 & 16, 17 & 18 U.G.	
GSCLZ	Inactive	East Coeur d'Alene Silver Mines Scott Bldg. Wallace, Idaho 83873			Shoshone	0		U.G.
GSCLZ	Inactive	Eastern Star Mining Co. W. 606 3rd Ave. Spokane, Washington	Arlington		Shoshone	0	Coeur d'Alene mining district	U.G.
GSCLZ	Inactive	Echo Mining Co., Ltd. Scott Bldg. Wallace, Idaho 83873			Shoshone	0	Lelande mining district near Burke	U.G.
GSCLZ	Inactive	Empire Gold Mines, Inc. 504½ Bank St. Wallace, Idaho 83873			Shoshone	0	T47N, R5E	U.G.
GSCLZ	Inactive	Epic Silver 116 McKinley Kellogg, Idaho 83837			Shoshone	0		U.G.
GSCLZ	Inactive	Evolution Mining Co. Scott Bldg. Wallace, Idaho 83873			Shoshone	0	Near Osburn	U.G.
GSCLZ	Inactive	Exposition Mining Co. E. 1711 Trent Spokane, Washington 99202			Shoshone	0	T48N, R2E, S31	U.G.
GSCLZ	Inactive	Fahey Group Mines, Inc. W. 422 Riverside, Room 201 Spokane, Washington 99201	Fahey Group		Shoshone	0	T48N, R3E	U.G.
GSCLZ	Inactive	Flojodo Mines, Inc. Scott Bldg. Wallace, Idaho 83873			Shoshone	0	Placer Center mining district	U.G.

09

COMMODITY	STATUS	NAME	MINE	INSP.	COUNTY	MEN	LOCATION	TYPE
GSCLZ	Inactive	Fourth of July Silver Box 212 Mullan, Idaho 83846	Fourth of July		Shoshone	0	T47N, R6E	U.G.
GSCLZ	Inactive	Frontier Silver Mines 504½ Bank Street Wallace, Idaho 83873			Shoshone	0	T50N, R5E near Murray	U.G.
GSCLZ	Inactive	Gem State Silver, Inc. Scott Bldg. Wallace, Idaho 83873			Shoshone	0		U.G.
GSCLZ	Inactive	Golconda Mining Corp. Scott Bldg. Wallace, Idaho 83873	Golconda		Shoshone	0	T48N, R5E, S28 & 29	U.G.
61 GSCLZ	Inactive	Gold Chain, Inc. Box 1127 Wallace, Idaho 83873			Shoshone	0	Near Wallace in the Placer Creek mining district	U.G.
GSCLZ	Inactive	Gold Leaf Mining Corp. 614 - 4th & Pike Seattle, Washington 98101	Canyon Silver	X	Shoshone	8	Burke Canyon near Wallace	U.G.
GSCLZ	Inactive	Gold Run Gulch Mines, Inc. Scott Bldg. Wallace, Idaho 83873			Shoshone	0		U.G.
GSCLZ	Active	Golden Chest, Inc. Box 361 Silverton, Idaho 83873	Golden Chest	X	Shoshone	3	Murray, Idaho	U.G.
GSCLZ	Inactive	Government Gulch Mining Co. Box 440 Wallace, Idaho 83873			Shoshone	0	T48N, R2E near Pinehurst	U.G.
GSCLZ	Inactive	Granada Lead Mines, Inc. Scott Bldg. Wallace, Idaho 83873			Shoshone	0	Hunter mining district	U.G.

COMMODITY	STATUS	NAME	MINE	INSP.	COUNTY	MEN	LOCATION	TYPE
GSCLZ	Inactive	Great Eastern Mining Co., Ltd. Scott Bldg. Wallace, Idaho 83873			Shoshone	0		U.G.
GSCLZ	Inactive	Green Hill Cleveland Mng. Co. Box 440 Wallace, Idaho 83873			Shoshone	0	Lelande mining district	U.G.
GSCLZ	Inactive	Hansy Copper & Gold Mines, Inc. 717 W. Sprague Spokane, Washington 99204	Hansy		Shoshone	0	St. Joe mining district near Avery	U.G.
GSCLZ	Inactive	Hayden Hill Consolidated P. O. Box 487 Portland, Oregon 97207	Purim		Shoshone	0	Evolution mining district. Operated by Sunshine Mng. Co.	U.G.
29 GSCLZ	Active	Hecla Mining Co. Box 320 Wallace, Idaho 83873	Lucky Friday	X	Shoshone	197	T48N, R5E, S35	U.G.
			Silver Summit-	X		3	T48N, R3E, S23	U.G.
			Owner: Con. Silver Star-Morning- Owner: Bunker	X		335	T48N, R5E, S21	U.G.
GSCLZ	Inactive	Helena Silver Mines Box 488 Coeur d'Alene, Idaho 83814	Wonderful		Shoshone		T47N, R6E, 5 mi. SE of Mullan	U.G.
GSCLZ	Inactive	Hercules Extension, Inc. E. 1711 Trent Spokane, Washington 99202	Hercules Extension		Shoshone	0	T49N, R5E, S34	U.G.
GSCLZ	Inactive	Highland-Surprise Con. Mng. Co. Scott Bldg. Wallace, Idaho 83873	Highland-Surprise		Shoshone	0	T50N, R4E, S35 & 36	U.G.
GSCLZ	Inactive	Howard & Wiley Hollingsworth N.W. 144 Stadium Way Pullman, Washington 99163			Shoshone	0	T48, 49 & 50N, R3, 4 & 5E	U.G.

COMMODITY	STATUS	NAME	MINE	INSP.	COUNTY	MEN	LOCATION	TYPE
GSCLZ	Inactive	Homestake Silver-Lead Mng. Co. E. 12815 Sprague Ave. Spokane, Washington 99216			Shoshone	0		U.G.
GSCLZ	Inactive	Hope Chest Silver, Inc. W. 412 Sprague Spokane, Washington 99204			Shoshone	0	T49N, R3E	U.G.
GSCLZ	Inactive	Hunter Creek Mining Co. Box 487 Portland, Oregon 97207			Shoshone	0	Hunter mining district near Mullan	U.G.
GSCLZ	Inactive	Hypothek Mng. & Mlg. Co. Scott Bldg. Wallace, Idaho 83873			Shoshone	0		U.G.
GSCLZ	Inactive	Idaho Copper & Gold, Inc. 6th & Bank Wallace, Idaho 83873			Shoshone	0	T18 & 19N, R7E	U.G.
63								
GSCLZ	Inactive	Idaho General Mines, Inc. Box 568 Kellogg, Idaho 83837	General		Shoshone	0	Yreka & Summit mining districts	U.G.
GSCLZ	Inactive	Idaho Leadville Mines Co. 704 West First Spokane, Washington 99204			Shoshone	0	T48N, R3E	U.G.
GSCLZ	Inactive	Idaho & Los Angeles Mng. & Mlg. Scott Bldg. Wallace, Idaho 83873			Shoshone	0		U.G.
GSCLZ	Inactive	Idaho-Montana Silver, Inc. Scott Bldg. Wallace, Idaho 83873			Shoshone	0	Hunter mining district. Operating agreement with The Bunker Hill. Co.	U.G.

COMMODITY	STATUS	NAME	MINE	INSP.	COUNTY	MEN	LOCATION	TYPE
GSCLZ	Inactive	Idaho Silver, Inc. Box 1088 Wallace, Idaho 83873			Shoshone	0	Hunter mining district near Mullan	U.G.
GSCLZ	Inactive	Idaho Willow Creek Mining Co. Scott Bldg. Wallace, Idaho 83873	Willow Creek		Shoshone	0	Hunter mining district	U.G.
GSCLZ	Inactive	Idora Silver Mines, Inc. Route 3 Coeur d'Alene, Idaho 83814	Idora		Shoshone	0	1/4 mi. E of Monitor. T49N, R5E	U.G.
GSCLZ	Inactive	Independence Lead Mines, Inc. 364 Paulsen Bldg. Spokane, Washington 99201			Shoshone	0	Exploration being done by Hecla Mng. Co.	U.G.
GSCLZ	Inactive	Inspiration Lead Co., Inc. 504 Columbia Bldg. Spokane, Washington 99210	Inspiration- Silverore		Shoshone	0	T48N, R4E	U.G.
GSCLZ	Inactive	International Mines Ltd. Scott Bldg. Wallace, Idaho 83873			Shoshone	0	Lelande mining district near Burke	U.G.
GSCLZ	Inactive	Ivanhoe Mining Co., Inc. Scott Bldg. Wallace, Idaho 83873	Ivanhoe		Shoshone	0	Hunter mining district	U.G.
GSCLZ	Inactive	Sid Jones Box 82 Burke, Idaho 83807	Hecla lease		Shoshone		T48N, R5E, S10	U.G.
GSCLZ	Inactive	Kelly Mining Co. Box 311 Coeur d'Alene, Idaho 83814	Lombardy		Shoshone	0	T49N, R3E	U.G.
GSCLZ	Inactive	King of Pine Creek Mining Co. Box 487 Portland, Oregon 97207			Shoshone	0	T48N, R2E	U.G.

COMMODITY	STATUS	NAME	MINE	INSP.	COUNTY	MEN	LOCATION	TYPE
GSCLZ	Inactive	Kodiak Mines, Inc. Box 908 Wallace, Idaho 83873			Shoshone	0	Summit mining district	U.G.
GSCLZ	Inactive	Lake Gulch Silver Mines, Inc. Scott Bldg. Wallace, Idaho 83873			Shoshone	0	South of Silverton	U.G.
GSCLZ	Inactive	Lombardy Mining & Milling Co. 102 W. Mission Kellogg, Idaho 83837	Lombardy		Shoshone	0	Yreka mining district	U.G.
GSCLZ	Inactive	Lookout Mtn. Mining & Milling 116 McKinley Ave. Kellogg, Idaho 83837			Shoshone	0	Yreka mining district	U.G.
GSCLZ	Inactive	Lucky Friday Extension Co. Box 709 Wallace, Idaho 83873	Lucky Friday Ex.		Shoshone		Development by Hecla Mng. Co.	U.G.
GSCLZ	Inactive	Lucky Friday Silver Lead Mines Box 320 Wallace, Idaho 83873			Shoshone	0		U.G.
GSCLZ	Active	Magna Mining Co. Route 2 - Box 57 Harrison, Idaho 83833	Princeton-Magna	X	Shoshone		Development done by U.G. The Bunker Hill Co.	
GSCLZ	Inactive	Mascot Silver-Lead Mines Box 660 Kellogg, Idaho 83837	Little Pittsburg		Shoshone	0	T48N, R2E in Yreka mining district	U.G.
GSCLZ	Inactive	McGregor Mining Co. Box 45 Cataldo, Idaho 83810			Shoshone	0	T48N, R1E, S3	U.G.
GSCLZ	Active	McLin-Asher Box 641 Kellogg, Idaho 83837	McLin Lease	X	Shoshone		T48N, R2E, S13	U.G.

COMMODITY	STATUS	NAME	MINE	INSP.	COUNTY	MEN	LOCATION	TYPE
GSCLZ	Active	Metropolitan Mines Co., Ltd. Scott Bldg. Wallace, Idaho 83873			Shoshone		Operated by Sunshine Mng. Co.	U.G.
GSCLZ	Inactive	Midvale Mining Co. 301 Lloyd Bldg. Seattle, Washington 98101			Shoshone	0	Lelande mining district near Burke	U.G.
GSCLZ	Inactive	Military Mng. & Millg. Co., Ltd. E. 3605 Congress Avenue Spokane, Washington 99203	Military		Shoshone	0	T48N, R5 & 6E	U.G.
GSCLZ	Inactive	Moon Gulch Mines, Inc. Scott Bldg. Wallace, Idaho 83873			Shoshone	0		U.G.
GSCLZ	Inactive	Moonlight Mining Co. P. O. Box 1010 Wallace, Idaho 83873	Moonlight		Shoshone	0	T48N, R5E	U.G.
GSCLZ	Inactive	Bill Mullan Box 1266 Wallace, Idaho 83873	Morning lease		Shoshone		T48N, R2E, S12	U.G.
GSCLZ	Inactive	Nabob Silver-Lead Mines Box 899 Kellogg, Idaho 83837	Nabob		Shoshone	0	T48N, R2E, S20, 22 28 & 29	U.G.
GSCLZ	Active	National Silver Lead Mng. Co. Scott Bldg. Wallace, Idaho 83873			Shoshone		Operating agreement with Sunshine Mng.Co.	U.G.
GSCLZ	Inactive	New Hilarity Mining Co. 17500 E. Wellesley Spokane, Washington 99216			Shoshone	0	Property leased to Signal Silver Gold	U.G.
GSCLZ	Inactive	Niagara Mng. & Develop. Co. Box 970 Coeur d'Alene, Idaho 83814	Blaine Emmett		Shoshone	0	T50N, R5E	U.G.

COMMODITY	STATUS	NAME	MINE	INSP.	COUNTY	MEN	LOCATION	TYPE
GSCLZ	Inactive	Nine Corporation Box 320 Wallace, Idaho 83873			Shoshone	0	Leased by Hecla Mng.U.G. Co. & Day Mines, Inc.	
GSCLZ	Active	Noranda Exploration, Inc. Box 15638 Denver, Colorado 80215	Atlas	X	Shoshone	3	T47 & 48N, R5E	U.G.
GSCLZ	Inactive	North Franklin Mining Co. 160 King Wallace, Idaho 83873			Shoshone	0		U.G.
GSCLZ	Inactive	North Star Mining Co. 1925 Burke Road Wallace, Idaho 83873	North Star		Shoshone	0	St. Joe mining district, 30 miles from Wallace	U.G.
GSCLZ	Inactive	Northern Light Mng. & Mllg. Co. 1025 Goodrich St. Paul, Minnesota 55105			Shoshone	0	Yreka mining district	U.G.
GSCLZ	Inactive	Nuclear Silver Corp. Box 709 Wallace, Idaho 83873			Shoshone	0	Yreka mining district	U.G.
GSCLZ	Inactive	Oom Paul Consolidated Mng. Co. P. O. Box 320 Wallace, Idaho 83873	Oom Paul		Shoshone	0	Lelande mining district	U.G.
GSCLZ	Inactive	Oregon-Idaho Silver Gold Mines Development Corp. Box 1127 Wallace, Idaho 83873			Shoshone		T47N, R5E	U.G.
GSCLZ	Inactive	Osburn Silver, Inc. c/o Don McClary Mullan, Idaho 83846			Shoshone	0	T48N, R3 & 4E	U.G.
GSCLZ	Active	Painted Desert Uranium & Oil S. 2411 Myrtle Spokane, Washington 99203	Silver Strike	X	Shoshone		T49N, R5W	U.G.

COMMODITY	STATUS	NAME	MINE	INSP.	COUNTY	MEN	LOCATION	TYPE
GSCLZ	Inactive	Park Copper & Gold Mng. Co., Ltd. Box 1072 Wallace, Idaho 83873	Park Copper		Shoshone	0	T47N, R5E	U.G.
GSCLZ	Inactive	Pinehurst Silver, Inc. E. 1711 Trent Spokane, Washington 99202	Pinehurst Silver		Shoshone	0	T48N, R2E	U.G.
GSCLZ	Inactive	Pioneer Mines, Inc. Scott Bldg. Wallace, Idaho 83873			Shoshone	0		U.G.
GSCLZ	Inactive	Placer Creek Mng. Co. Scott Bldg. Wallace, Idaho 83873			Shoshone	0	Placer Center & Evolution mining districts	U.G.
GSCLZ	Inactive	Plainview Mining Co. Box 447 Kellogg, Idaho 83837			Shoshone	0	Evolution mining district near Osburn	U.G.
GSCLZ	Inactive	Princeton Mining Co. Scott Bldg. Wallace, Idaho 83873			Shoshone	0	Hunter mining district near Mullan	U.G.
GSCLZ	Inactive	Reindeer-Queen Mining Co. Scott Bldg. Wallace, Idaho 83873			Shoshone	0	Hunter mining district	U.G.
GSCLZ	Inactive	R-G Mining Co. Box 1030 Orofino, Idaho 83544			Shoshone	0	T49N, R3 & 4E T50N, R3 & 4E	U.G.
GSCLZ	Inactive	Rhode Island Mining Co. Box 500 Osburn, Idaho 83849			Shoshone	0	Evolution mining district near Osburn	U.G.
GSCLZ	Inactive	Robert A. Rice Box 373 Osburn, Idaho 83849	Sidney lease		Shoshone		T48N, R2E, S22	U.G.

COMMODITY	STATUS	NAME	MINE	INSP.	COUNTY	MEN	LOCATION	TYPE
GSCLZ	Inactive	Rock Creek Mining Co. Scott Bldg. Wallace, Idaho 83873			Shoshone	0		U.G.
GSCLZ	Inactive	Royal Apex Silver, Inc. Box 889 Wallace, Idaho 83873	Royal Apex		Shoshone	0	T49N, R4E	U.G.
GSCLZ	Inactive	St. Elmo Silver Mines Corp. Scott Bldg. Wallace, Idaho 83873	St. Elmo		Shoshone		T48N, R4E, S19	U.G.
GSCLZ	Inactive	Scenic Silver Inc. 721 Mullan Ave. Osburn, Idaho 83849			Shoshone	0		
69 GSCLZ	Inactive	Sentinel Silver Mines, Inc. Scott Bldg. Wallace, Idaho 83873			Shoshone	0		U.G.
GSCLZ	Inactive	Shields Gulch Mining Co. Box 954 Wallace, Idaho 83873			Shoshone	0	T48N, R4E	U.G.
GSCLZ	Inactive	Shoshone Silver Mng. Co., Inc. Box 697 Osburn, Idaho 83849			Shoshone	0	T47N, R5E	U.G.
GSCLZ	Inactive	Sidney Mining Co. P. O. Box 1049 Kellogg, Idaho 83837	Sidney		Shoshone	0	T48N, R2E, S22	U.G.
GSCLZ	Inactive	Signal Silver Gold, Inc. 116 McKinley Ave. Kellogg, Idaho 83837			Shoshone		Yreka mining district	U.G.
GSCLZ	Inactive	Siler Equipment Sales, Inc. Box 565 Kellogg, Idaho 83837	Highland-Surprise lease		Shoshone		T50N, R4E, S35 & 36	U.G.

COMMODITY	STATUS	NAME	MINE	INSP.	COUNTY	MEN	LOCATION	TYPE
GSCLZ	Active	Silver Beaver Mng. Co., Inc. 504½ Bank St. Wallace, Idaho 83873	Silver Beaver	X	Shoshone	4	T49N, R4E	U.G.
GSCLZ	Inactive	Silver Bell Mines, Inc. Scott Bldg. Wallace, Idaho 83873			Shoshone	0		U.G.
GSCLZ		Silver Belt Mines, Inc. Scott Bldg. Wallace, Idaho 83873			Shoshone	0	Yreka mining district. Operating agreement with Sunshine Mng. Co.	U.G.
GSCLZ	Inactive	Silver Bowl, Inc. 116 McKinley Ave. Kellogg, Idaho 83837			Shoshone		Yreka mining district	U.G.
70 GSCLZ	Inactive	Silver Buckle Mines, Inc. Box 1088 Wallace, Idaho 83873	Silver Buckle		Shoshone	0	Placer Center mining district	U.G.
GSCLZ	Inactive	Silver Crest Mines, Inc. Scott Bldg. Wallace, Idaho 83873			Shoshone	0		U.G.
GSCLZ	Active	Silver Crystal Mines, Inc. 609 Bank Street Wallace, Idaho 83873	Silver Crystal	X	Shoshone	7	T49N, R6E, S6 & 7	U.G.
GSCLZ	Active	Silver Dollar Mining Co. Scott Bldg. Wallace, Idaho 83873	Silver Dollar	X	Shoshone		Operated and adjoining Sunshine Mng. Co.	U.G.
GSCLZ	Inactive	Silver Eagle Mining Co. Scott Bldg. Wallace, Idaho 83873			Shoshone		Placer Center mining district	U.G.
GSCLZ	Inactive	Silver Fortune Mines, Inc. Scott Bldg. Wallace, Idaho 83873			Shoshone	0		U.G.

COMMODITY	STATUS	NAME	MINE	INSP.	COUNTY	MEN	LOCATION	TYPE
GSCLZ	Inactive	Silver Futures, Inc. Box 1127 Wallace, Idaho 83873			Shoshone		Near Wallace, Idaho	U.G.
GSCLZ	Inactive	Silver Hill Mines, Inc. Scott Bldg. Wallace, Idaho 83873			Shoshone	0		U.G.
GSCLZ	Inactive	Silver Key Mining Co., Inc. 311 Main Kellogg, Idaho 83837	Silver Key		Shoshone	0	T48N, R4E	U.G.
GSCLZ	Inactive	Silver Moor, Inc. 160 King St. Wallace, Idaho 83873			Shoshone			U.G.
GSCLZ	Inactive	Silver Mtn. Lead Mines, Inc. Scott Bldg. Wallace, Idaho 83873			Shoshone	0	Hunter mining district	U.G.
GSCLZ	Inactive	Silver Peak Mining Co., Inc. 504½ Bank St. Wallace, Idaho 83873			Shoshone		T49N, R4E	U.G.
GSCLZ	Inactive	Silver Rich Mines, Inc. W. 606 3rd Ave. Spokane, Washington 99204			Shoshone	0	T49N, R4E	U.G.
GSCLZ	Inactive	Silver Rock Mining Co., Inc. 504½ Bank St. Wallace, Idaho 83873			Shoshone		T48N, R4E	U.G.
GSCLZ	Inactive	Silver Scott Mines, Inc. Route 1 - Box 157 Leavenworth, Washington 98826	Lost Cabin		Shoshone	0	Located in Bear Gulch 4 mi. SE of Murray	U.G.
GSCLZ	Inactive	Silver Seal Inc. 3721 32nd West Seattle, Washington 98199	Silver Seal		Shoshone	0	Yreka district, 10 mi. from Kellogg	U.G.

COMMODITY	STATUS	NAME	MINE	INSP.	COUNTY	MEN	LOCATION	TYPE
GSC LZ	Inactive	Silver Shadow Mines, Inc. Box 889 Wallace, Idaho 83873	Silver Shadow		Shoshone	0	T47N, R5E	U.G.
GSC LZ	Inactive	Silver Shoshone Mining Co. 504½ Bank Street Wallace, Ida 83873			Shoshone		Eagle district near Wallace	U.G.
GSC LZ	Active	Silver Star Mines, Inc. Box 1025 Kellogg, Idaho 83837	Silver Star- Oper: Day Mine	X	Shoshone		T48N, R4E, S14 & 15	U.G.
GSC LZ	Inactive	Silver Strike Mining Co., Inc. N. 3306 Monroe St. Spokane, Washington 99205	Silver Strike		Shoshone	0	T49N, R5E, S22 & 27	U.G.
GSC LZ	Inactive	Silver Sun, Inc. Box 21 Smelterville, Idaho 83868	Silver Sun		Shoshone	0	5 mi. E of Kellogg	U.G.
GSC LZ	Inactive	Silver Surprise, Inc. 3721 32rd West Seattle, Washington 98199			Shoshone	0	Yreka mining district. Working agreement with Sunshine Mng. Co.	U.G.
GSC LZ	Active	Silver Syndicate, Inc. Scott Bldg. Wallace, Idaho 83873	Silver Syndicate		Shoshone		Operated by Sunshine Mng. Co.	U.G.
GSC LZ	Inactive	Silver Trails Mines, Inc. 116 McKinley Kellogg, Idaho 83837			Shoshone			U.G.
GSC LZ	Inactive	Silverore Mines, Inc. Box 487 Portland, Oregon 97207	Inspiration- Silverore		Shoshone	0	T48N, R4E	U.G.
GSC LZ	Inactive	Silverstone Mines, Inc. Box 889 Wallace, Idaho 83873	Silverstone		Shoshone	0	T49N, R2E	U.G.

COMMODITY	STATUS	NAME	MINE	INSP.	COUNTY	MEN	LOCATION	TYPE
GSCLZ	Inactive	South Atlas Mines, Inc. Scott Bldg. Wallace, Idaho 83873			Shoshone			U.G.
GSCLZ	Inactive	Spokane National Mines, Inc. 424 Hutton Bldg. Spokane, Washington 99204	Sisters Shoshone		Shoshone		T48N, R4E, S25 T48N, R2E, S12	U.G. U.G.
GSCLZ	Inactive	Square Deal Mng. & Mllg. Co., Ltd. Scott Bldg. Wallace, Idaho 83873			Shoshone		Hunter mining district	U.G.
GSCLZ	Active	Sterling Mng. Co. Box 889 Wallace, Idaho 83873	Sterling	X	Shoshone		Leased to Day Mines, ASARCO and Callahan Mng. Corp.	U.G.
73 GSCLZ	Inactive	Stevens Peak Mines, Inc. Scott Bldg. Wallace, Idaho 83873			Shoshone			U.G.
GSCLZ	Active	Striker Morning Lease Co. Box 1086 Wallace, Idaho 83873	Morning #5	X	Shoshone	3	Mullan, Idaho	U.G.
GSCLZ	Inactive	Success Mining Co., Ltd. Box 930 Wallace, Idaho 83873	Success		Shoshone	0	T48N, R4 & 5E	U.G.
GSCLZ	Inactive	Summit Silver, Inc. Box 488 Coeur d'Alene, Idaho 83814	Ella Claims		Shoshone		T48N, R6E	U.G.
GSCLZ	Inactive	Sunset Silver, Inc. W. 606 3rd Ave. Spokane, Washington 99204			Shoshone	0	T49N, R3E	U.G.
GSCLZ	Active	Sunshine Consolidated, Inc. Scott Bldg. Wallace, Idaho 83873	Sun Con		Shoshone		Operated by Sunshine Mng. Co.	U.G.

COMMODITY	STATUS	NAME	MINE	INSP.	COUNTY	MEN	LOCATION	TYPE
GSCLZ	Active	Sunshine Mining Co. P. O. Box 1080 Kellogg, Idaho 83837	Sunshine	X	Shoshone	440	T48N, R3E, S15 & 22	U.G.
GSCLZ	Inactive	Superior Silver Mines, Inc. Old Natl. Bank Bldg. - Room 1216 Spokane, Washington 99201			Shoshone	0		U.G.
GSCLZ	Inactive	Tip Top Silver, Inc. W. 606 - 3rd Avenue Spokane, Washington 99204			Shoshone	0	T48N, R6E	U.G.
GSCLZ	Inactive	Toledo Mining Co. Scott Bldg. Wallace, Idaho 83873			Shoshone	0		U.G.
74 GSCLZ	Inactive	Chester Uhl Box 1322 Wallace, Idaho 83873	Woodland No. 1		Shoshone	0	T48N, R5E, S10	U.G.
GSCLZ	Inactive	United Mines, Inc. 116 McKinley Avenue Kellogg, Idaho 83837			Shoshone	0	Evolution mining district	U.G.
GSCLZ	Inactive	Utah-Idaho Con. Uranium, Inc. 116 McKinley Avenue Kellogg, Idaho 83837			Shoshone	0	Placer Center mining district	U.G.
GSCLZ	Inactive	Vindicator Silver-Lead Mng. Co. Scott Bldg. Wallace, Idaho 83873	Vindicator		Shoshone	0	Hunter mining district	U.G.
GSCLZ	Inactive	Wall Street Mining Co. P. O. Box 320 Wallace, Idaho 83873	Wall Street		Shoshone	0	Hunter mining district	U.G.
GSCLZ	Active	Wallace Diamond Drill Co. Box 15 Wallace, Idaho 83873	Bunker Chance	X	Shoshone	3	Near Wardner	U.G.

COMMODITY	STATUS	NAME	MINE	INSP.	COUNTY	MEN	LOCATION	TYPE
GSCLZ	Inactive	The Wallace Mining Co. Scott Bldg. Wallace, Idaho 83873			Shoshone	0	Lelande mining district	U.G.
GSCLZ	Inactive	Wallace Silver, Inc. Box 463 Mullan, Idaho 83846			Shoshone	0	Lelande mining district	U.G.
GSCLZ	Inactive	Western Silver-Lead Corp. Scott Bldg. Wallace, Idaho 83873			Shoshone	0	Hunter mining district	U.G.
GSCLZ		David Wilkerson Silverton, Idaho 83867	Nepsic		Shoshone		T49N, R5E, S29	U.G.
GSCLZ	Inactive	Wyoming Mng. & Millg. Co. Box 440 Wallace, Idaho 83873			Shoshone	0	T48N, R2E	U.G.
75 GSCLZ	Inactive	Yreka United, Inc. Box 147 Kellogg, Idaho 83837			Shoshone	0	Under working agreement with The Bunker Hill Co.	U.G.
GSCLZ	Active	H. Zanetti - W. K. Kennedy Box 500 Osburn, Idaho 83849	Interstate Rex Mill	X X	Shoshone	7 7	9-1/2 mi. NE of Wallace on east fork on 9 mi. creek	U.G. Mill
GSCLZ	Active	Zanetti Brothers Box 500 Osburn, Idaho 83849	Zanetti Bros.		Shoshone		T49N, R5E, S31 & 32	U.G.
GSCLZ	Active	Antimony Gold Ores, Inc. 2808 Ona Boise, Idaho 83705	Leased to: Electronic Metals		Valley	0	Yellow Pine, Idaho	O.P.
GSCLZ	Inactive	Bear Valley Mining Co. 2320 Empire Way Boise, Idaho 83705			Valley	0	Big Meadows & Bear Valley. T11N, R8E	O.P.

COMMODITY	STATUS	NAME	MINE	INSP.	COUNTY	MEN	LOCATION	TYPE
GSCLZ	Inactive	Bradley Mining Co. 582 Market St., Room 302 San Francisco, Calif. 94104	Yellow Pine		Valley	0	T18 & 19N, R9E. Leased by Ranchers Exploration	U.G.
GSCLZ	Inactive	Copper Camp Consolidated Mines c/o D. H. Peterson Route 2 Boise, Idaho 83702	Copper Camp		Valley	0	T21N, R10 & 11E	U.G.
GSCLZ	Inactive	Dewey Mining Co. Box 2527 Boise, Idaho 83701			Valley	0	Thunder Ridge mining district	U.G.
GSCLZ	Inactive	J. E. Dolan 1006 N. 9th Boise, Idaho 83702	Silver King		Valley		Located on S fork of Salmon River near Cascade	
76 GSCLZ	Inactive	Electronic Metals, Inc. 2808 Ona Boise, Idaho 83705	West End Creek		Valley		Near Yellow Pine	O.P.
GSCLZ	Inactive	Eureka Silver King Mines Corp. 516 First Natl. Bank Bldg. Boise, Idaho 83702	Eureka		Valley	0	12 mi. S of Knox Junction	U.G.
GSCLZ	Inactive	Golden Reef Mining Co. Box 1466 Boise, Idaho 83701			Valley	0	Thunder Ridge mining district	U.G.
GSCLZ	Inactive	The Holcomb Co., Ltd. c/o Calvin Dworshak Simplot Bldg. Boise, Idaho 83701			Valley	0	Thunder Ridge mining district	U.G.
GSCLZ	Active	Homestake Mining Co. 650 California Street San Francisco, Calif. 94132	Sunnyside	X	Valley	4	T19N, R11E, S28 & 29U.G.	

COMMODITY	STATUS	NAME	MINE	INSP.	COUNTY	MEN	LOCATION	TYPE
GSCLZ	Inactive	Idaho Independent Mining Co. Box 105 Cascade, Idaho 83611			Valley	0	Near Yellow Pine	U.G.
GSCLZ	Inactive	Idaho Minerals Co. 2808 Ona Boise, Idaho 83705	Leased to: Electronic Metals		Valley		Yellow Pine	O.P.
GSCLZ	Inactive	Missouri-Idaho Mining & Smelting 1100 Commerce Tower Kansas City, Missouri 64199			Valley	0	T20N, R8 & 9E	U.G.
GSCLZ	Inactive	R. O. Nelson 4221 Starcrest Dr. Boise, Idaho 83706	Dewey		Valley	0	T19N, R11E, S30	U.G.
77 GSCLZ	Inactive	Profile Mines & Minerals 1502 Heron St. Boise, Idaho 83702	Profile Peak Profile Summit		Valley		Profile Gap, 12 mi. N of Yellow Pine	U.G.
GSCLZ	Inactive	Profile Tamarack Mines Co. 7430 N. Huron Portland, Oregon 97203			Valley	0	Yellow Pine mining district	U.G.
GSCLZ	Inactive	Smith Creek Hydraulic Mng. Co. 3220 Dorian Boise, Idaho 83705			Valley	0	Edwardsburg mining district	O.P.
GSCLZ	Inactive	Sunnyside Consolidated Mng. Co. Box 2527 Boise, Idaho 83701			Valley	0	Thunder Ridge mining district	U.G.
GSCLZ	Inactive	Twin River Development, Inc. 101-325 Howe St. Vancouver, B. C. Canada V6C 1Z7	West End Gold		Valley		T18N, R9E	O.P.

COMMODITY	STATUS	NAME	MINE	INSP.	COUNTY	MEN	LOCATION	TYPE
GSCLZ	Inactive	Vieco Resources Ltd. 201-545 Clyde Ave. W. Vancouver, B. C. Canada V7T 1C5	Copper Camp		Valley		T21N, R10E	U.G.
GSCLZ	Inactive	Walker Mining Co. c/o Jack Walker Yellow Pine, Idaho 83677	4th of July		Valley	0	T21N, R9E, S32	U.G.
GSCLZ	Inactive	Idaho Mining & Smelting Co. 609 Idaho Bldg. Boise, Idaho 83702	IXLX		Washington	0	Heath mining district near Cambridge	U.G.
GSCLZ	Active	Inspiration Development Co. N. 2310 Pines Road Spokane, Washington 99216	Thorn Springs		Washington	6	T14N, R6W	U.G.
78 GSCLZ	Inactive	Silver Still Mining Co. c/o Lee Thorson Route 1 Weiser, Idaho 83672	Silver Still		Washington	0	Near Weiser, Idaho	U.G.

COMMODITY	STATUS	NAME	MINE	INSP.	COUNTY	MEN	LOCATION	TYPE
Placers	Active	Fred Bell 2038 N. 16 Boise, Idaho 83702	Ash Croft #2	X	Boise		1 mi. N of Placerville	O.P.
Placers	Inactive	Boise Ridge Mng. & Mllg. L. J. Claiborne 112 E. 38 Boise, Idaho 83704	McCarty		Boise			O.P.
Placers	Inactive	Lee Colson 2403 Lemhi Boise, Idaho 83702	Vacation No. 1, 2		Boise		8 mi. SE of Lowman	O.P.
Placers	Inactive	Lewis Elmer 1624 Jessie Street Boise, Idaho 83705	Granger Group		Boise	0	T7N, R5E, S20 & 29	O.P.
79 Placers	Active	J. L. Miller 2216 N. 35 Boise, Idaho 83703	Gold Hill		Boise		T7N, R4E	O.P.
Placers	Inactive	Quartzburg Mining 1000 N. Liberty Boise, Idaho 83704	Gold Hill		Boise	0	T7N, R4E	O.P.
Placers	Inactive	Earl Rice Box 517 Elk City, Idaho 83525	Night Hawk		Boise		T8N, R5E, S35	O.P.
Placers	Inactive	Caribou Ghost Mining Co. 431 S. Second E. Soda Springs, Idaho 83276	Caribou Ghost		Bonneville	0	T3S, R44E	O.P.
Placers	Inactive	Mi Oro Mining Co. 164 S. Main Soda Springs, Idaho 83276			Bonneville	0	T4S, R44E	O.P.

COMMODITY	STATUS	NAME	MINE	INSP.	COUNTY	MEN	LOCATION	TYPE
Placers	Inactive	Fairfield Mining Co., Inc. 744 E. Weber Avenue Stockton, Calif. 95202			Camas		Near Fairfield	O.P.
Placers	Inactive	Bull Moose Mines, Inc. 1710 N. 4th St. Coeur d'Alene, Idaho 83814	Bull Moose		Clearwater	0	Near Orofino	O.P.
Placers	Inactive	Arco Mining Co. Box 745 Elk City, Oklahoma 73644	Arco		Custer	0	On Rankin Creek	O.P.
Placers	Inactive	George Castle Box 1310A Ketchum, Idaho 83340	Sunbeam		Custer	0	T13N, R14E, S19	O.P.
08 Placers	Inactive	Weidman Faith Mining Co., Inc. 1000 Powell - #45 San Francisco, Calif 94108	Weidman Diggings		Custer		T11N, R13E	O.P.
Placers	Inactive	Cal Creek Placers 1729 Washington Avenue Enumclaw, Washington 98022	Cal-Creek		Idaho	0	Warren mining district near McCall	O.P.
Placers	Inactive	Gem State Gold, Inc. 1105 Orchard Avenue Moscow, Idaho 83843	Little Deer Fighting Tiger		Idaho	0	T23N, R6E	O.P.
Placers	Inactive	Robert Newcomb 2215 North 34th Boise, Idaho 83703	Mahoney Creek Steamboat & Ole		Idaho	0	T22N, R6E	O.P.
Placers	Active	Charles Andrus Box 127 Marsing, Idaho 83639	Blue Gravel Group		Owyhee	5	T5S, R5W, S26 & 35	O.P.
Placers	Inactive	Minerals Extraction Inc. Box 2797 Boise, Idaho 83701	Snowshoe		Valley	0	T21N, R11E	O.P.

COMMODITY	STATUS	NAME	MINE	INSP.	COUNTY	MEN	LOCATION	TYPE
Barite	Inactive	Z. A. Franciskovic Carey, Idaho 83320	Boundary & Deep Gulches		Blaine		T3N, R21E, S12	O.P.
Barite	Inactive	J. R. Simplot Co. Box 912 Pocatello, Idaho 83201	Sun Valley Barite		Blaine	0	13 mi. NW of Hailey	O.P.
Barite	Active	Sluder Construction Box 203 Bellevue, Idaho 83313	Blackhawk	X	Blaine	6	14 mi. E of Hailey on Deer Creek	O.P.
Barite	Inactive	Bannock Apex Mines, Inc. Box 172 American Falls, Idaho 83211			Power	0	Near Arbon, Idaho	O.P.
Cement	Active	Idaho Portland Cement Co. Room 622 Old Natl. Bank Bldg. Spokane, Washington 99205	Inkom Plant & Quarry	X	Bannock	61	Located in Inkom	O.P. Plant
Clay	Active	Pullman Brick Company 7901 Warm Springs Avenue Boise, Idaho 83706	Burnt Sage		Ada Elmore		7 mi. E of Boise 20 mi. SW of Mtn. Home	Plant O.P.
			Marsing		Owyhee		5 mi. up the river from Marsing	O.P.
Clay	Active	Interpace Corp. Box 785 Ione, Calif. 95640	Tensed	X	Benewah	2	T44N, R5W, S12	O.P.
Clay	Active	Burley Brick & Sand Co. P. O. Box 487 Burley, Idaho 83318	Red Clay Pit Emerson	X	Cassia Minidoka		2 mi. S of Burley 1 mi. W of Burley	O.P. O.P.
Clay	Active	Idaho Falls Brick & Tile Co. Route 3 - Box 53 Idaho Falls, Idaho 83401	Roberts	X	Jefferson		1 mi. S & E of Roberts	O.P.
Clay	Inactive	The Anaconda Company Anaconda, Montana 59711	Olson		Latah	0	Located 4 mi. from Deary	O.P.

COMMODITY	STATUS	NAME	MINE	INSP.	COUNTY	MEN	LOCATION	TYPE
Clay	Active	A. P. Green Refractories Co. Box 158 Troy, Idaho 83871	State Lease No. 3314	X	Latah	20	Located at Troy	O.P.
Clay	Active	J. R. Simport Co. Misclasil Operations P. O. Box 647 Bovill, Idaho 83806	Balsa Clay Moose Creek		Latah		1-1/2 mi. S of Bovill 1 mi. W of Bovill and 1 mi. N of Hwy. 8	O.P.
Fluorspar	Active	Centennial Development Co. Box 41 Clayton, Idaho 83227	Pacific 9A	X	Custer		4 mi. NE of Bayhorse	U.G.
Fluorspar	Active	Spent Hansen Box 301 Rexburg, Idaho 83440	Cachalot	X	Custer		5 mi. W of Challis. Operated by Earl Waite	U.G.
Fluorspar	Active	N L Industries 5950 McIntyre Golden, Colorado 80401	Pacific	X	Custer		T13N, R18E	U.G.
Garnet	Active	Emerald Creek Garnet Milling P. O. Box 91 Fernwood, Idaho 83830	Emerald Creek	X	Benewah	5	T43N, R1E, S33	O.P.
Garnet	Active	Idaho Garnet Abrasive Co. Div. of Sunshine Mining P. O. Box 1080 Kellogg, Idaho 83837	Emerald Creek	X	Benewah	5-10	T43N, R1E, S34	O.P.
Gemstones	Active	Jeppesen & Wilson Company Box 95 Spencer, Idaho 83446	Opal Mountain	X	Clark	2	6 mi. E of Spencer	O.P.
Gemstones	Active	Spencer Opal Mines c/o Mark L. Stetler Box 113 Spencer, Idaho 83446	Spencer Opal		Clark	2	Opal Mtn, E of Spencer	O.P.

COMMODITY	STATUS	NAME	MINE	INSP.	COUNTY	MEN	LOCATION	TYPE
Gemstones	Active	Tepe Mining Co. Route 1 - Box 148A Marsing, Idaho 83639	Tepe	X	Owyhee		T3N, R5W, S35	O.P.
Graphite	Inactive	Sun Valley Exploration & Development 312 6th Street West Ketchum, Idaho 83340	Old Timer		Blaine		T4N, R18E, S6	
Graphite	Inactive	Joel C. Olsen Skyline Drive Boise, Idaho 83702	Stanley Ace		Custer		T11N, R12E, S28	
Gypsum	Active	E. J. Wilson & Sons Lidy Hot Springs Dubois, Idaho 83423	Snowball Quarry	X	Lemhi	6	T14N, R28E	O.P.
Gypsum	Active	Jim Hansen Consumers Co-op Assoc. 502 Pioneer Road Weiser, Idaho 83672	Iron Mtn.	X	Washington	5	T14N, R6W, S11	O.P.
Kyanite	Active	Ethyl Corporation Star Route Kooskia, Idaho 83539	Woodrat	X	Idaho	30	T33N, R5 & 6E	
Lime	Active	Utah-Idaho Sugar Company Box 1855 Idaho Falls, Idaho 83401			Bonneville		Idaho Falls	Plant only
Lime	Active	The Amalgamated Sugar Co. NW of City Nampa, Idaho 83651			Canyon Minidoka Twin Falls		Nampa Rupert SE of Twin Falls	Plant only
Lime	Active	Kerr-McGee Corp. Box 478 Soda Springs, Idaho 83276	Trail Canyon		Caribou		T8S, R42E, S25	O.P.

COMMODITY	STATUS	NAME	MINE	INSP.	COUNTY	MEN	LOCATION	TYPE
Lime	Inactive	Orofino Lime Products, Inc. Box 1030 Orofino, Idaho 83544	Lime Mtn.		Clearwater	0	T36N, R3E	O.P.
Mica	Inactive	Ida-Mica Industrial Minerals, Inc. Box 72 Moscow, Idaho 83843	Muscavite		Latah	0	Near Deary, Idaho	O.P.
Mica	Inactive	Non-Metallics, Inc. Box 72 Moscow, Idaho 83843	Muscovite		Latah	0	Near Deary, Idaho	O.P.
Peat	Inactive	Idaho Peat Industries, Inc. c/o Dan Jensen Downey, Idaho 83234	Marsh Creek		Bannock		3 mi. W of Downey	O.P.
Perlite	Active	Oneida Perlite Corp. Paul H. Mills, Pres. P. O. Box 162 Malad City, Idaho 83252	Oneida Perlite	X	Oneida	4	25 mi. NE of Malad on Wright Creek	O.P.
Phosphate	Active	Earth Sciences, Inc. Earth Sciences Road Golden, Colorado 80401	Bloomington	X	Bear Lake	4	T14S, R43E	U.G.
Phosphate	Active	J. R. Simplot Co. Fertilizer Division Box 912 Pocatello, Idaho 83201	Gay	X	Bingham	208	19 mi. E of Fort Hall	O.P.
Phosphate	Active	Agricultural Products, Inc. Box 37 Conda, Idaho 83230	Dry Valley	X	Caribou	95	T7 & 8 S, R44E	O.P.
Phosphate	Active	Anaconda Company Anaconda, Montana 59711		X	Caribou		Leased to J. R. Simplot Co.	O.P.
Phosphate	Active	Dravo, Inc. Box 975 Soda Springs, Idaho 83276	Henry Oper: Monsanto	X	Caribou		20 Mi. NE of Soda Springs	O.P.

COMMODITY	STATUS	NAME	MINE	INSP.	COUNTY	MEN	LOCATION	TYPE
Phosphate	Inactive	International Minerals & Chemicals Corp. IMC Plaza Libertyville, Illinois 60048			Caribou	0	Near Soda Springs	O.P.
Phosphate	Active	Monsanto Co. Box 816 Soda Springs, Idaho 83276	Ballard (Inactive) Henry	X X	Caribou	370	N of Soda Springs T6S, R43E, S30	O.P. O.P.
Phosphate	Inactive	Mountain Fuel Supply Co. 180 East - 1st South Salt Lake City, Utah 84139	Dry Valley		Caribou	0	Conda, Idaho	O.P.
Phosphate	Active	J. R. Simplot Co. Minerals & Chemical Division Conda, Idaho 83230	Conda	X	Caribou	94	Conda, Idaho	O.P.
☞Phosphate	Active	Stauffer Chemical Co. Star Route Randolph, Utah 84064	Wooley Valley	X	Caribou		Operated by Triangle Mng. Co.	O.P.
Phosphate	Active	Triangle Mining Co. P. O. Box 608 Soda Springs, Idaho 83276	Wooley Valley	X	Caribou	35	T7S, R43E, S13 & 14	O.P.
Phosphate	Active	Washington Construction Co. Box 536 Soda Springs, Idaho 83276	Dry Valley	X	Caribou	110	T7 & 8S, R44E	O.P.
Phosphate	Inactive	Bannock Chemical Co. Box 912 Pocatello, Idaho 83201	Centennial		Clark	0	T14N, R40 & 41E	O.P.
Pumice	Active	Idaho Dept. of Highways District No. 1 c/o Frank A. Oneida P. O. Box 4700 Pocatello, Idaho 83201	49		Bingham		T1S, R32E, S3 & 4 (presently inactive)	O.P.

COMMODITY	STATUS	NAME	MINE	INSP.	COUNTY	MEN	LOCATION	TYPE
Pumice	Active	Ancor, Inc. 2240 So. Yellowstone Idaho Falls, Idaho 83401	Albino		Bonneville			O.P.
Pumice	Active	Producer's Pumice 6001 Fairview Avenue Boise, Idaho 83704	Hoops	X	Bonneville	3	T1N, R38E, S23	O.P.
Pumice	Inactive	Western Block, Inc. L. P. Hoffman, Pres. P. O. Box 445 Nampa, Idaho 83651	Gabiola		Canyon			O.P.
Pumice	Active	Hess Pumice Products P. O. Box 209 Malad, Idaho 83252	Wright's Creek	X	Oneida	4	Located on Wright Creek	O.P.

COMMODITY	STATUS	NAME	MINE	INSP.	COUNTY	MEN	LOCATION	TYPE
Antimony	Inactive	Hermada Mining Co. 2808 Ona St. Boise, Idaho 83705	Hermada Antimony		Elmore	0	Near Atlanta	O.P.
Antimony	Inactive	W. H. Weatherby 6900 McMullen St. Boise, Idaho 83705			Elmore		T6N, R9E	U.G.
Antimony	Inactive	Antimony Mng. & Millg. Co. Box 804 Osburn, Idaho 83849	Great Dunker		Shoshone	0	Yreka mining district on West Fork of Pine Creek	U.G.
Antimony	Inactive	Day Mines, Inc. Box 1010 Wallace, Idaho 83873	Stanley		Shoshone			U.G.
Antimony	Inactive	Idaho Antimony Co. Box 899 Kellogg, Idaho 83837	Idaho Antimony		Shoshone	0	T48N, R2E	U.G.
Antimony	Active	Sunshine Mining Company P. O. Box 1080 Kellogg, Idaho 83837	Electrolytic Plant	X	Shoshone		Kellogg, Idaho	Plant
Antimony	Inactive	Bradley Mining Co. 582 Market St. San Francisco, Calif. 94104	Yellow Pine		Valley		T18N, R9E, S2 & 3. Leased to Ranchers Exploration	O.P.
Antimony	Active	Northwest Mining Co., Inc. 6060 N. Century Expwy - #242 Dallas, Texas 75206	Antimony Rainbow		Valley	6	Big Creek mining district	U.G.
Cobalt	Inactive	Idaho Mining Company P. O. Box 514 Cobalt, Idaho 83229	Blackbird No. 2		Lemhi		T21N, R18E	U.G.
Cobalt	Inactive	Sachem Prospects Division POM Corp. 4008 Highland Drive Salt Lake City, Utah	Little No Name		Lemhi		T18N, R20E, S4	U.G.

COMMODITY	STATUS	NAME	MINE	INSP.	COUNTY	MEN	LOCATION	TYPE
Iron Ore	Inactive	E. J. Wilson and Sons Lidy Hot Springs Dubois, Idaho 83423	Birch Creek		Clark		Lidy Hot Springs	O.P.
Iron Ore	Inactive	Joe Ausich Mackay, Idaho 83251	Tuscarora Gulch		Custer		T6N, R23E, S12 & 13	
Iron Ore	Active	C & W Sand and Gravel Route 1 Weiser, Idaho 83672	Iron Mtn.		Washington		T14N, R5W	O.P.
Iron Ore	Inactive	Iron Mtn. Mining Co. Box 630 Weiser, Idaho 83672	Leased to: Rock Island Gypsum Co.		Washington		T14N, R7W, S23	O.P.
Mercury	Inactive	Robert Newcomb 2215 North 34th Boise, Idaho 83703	Washington Claims		Owyhee	0	12 mi. SE of Marsing towards Murphy	O.P.
Mercury	Inactive	Tepe Mining Co. Route 1 - Box 148A Marsing, Idaho 83639	Tepe		Owyhee	0	T3N, R5W	O.P.
Mercury	Inactive	El Paso Natural Gas Co. Mining Division P. O. Box 1492 El Paso, Texas 79978	Idaho-Almaden		Washington		T10 & 11N, R3W, S4, 5, 32 & 33	O.P.
Molybdenum	Inactive	Payette Resources, Inc. 105-1670 W. 8th Avenue Vancouver, B. C. Canada V6J 1V4			Boise	0	T9N, R6E	U.G.
Molybdenum	Inactive	Vulcan Silver Mining Co. Box 64 Cataldo, Idaho 83810	Vulcan		Bonner	0	On Lake Pend O'Reille	U.G.

COMMODITY	STATUS	NAME	MINE	INSP.	COUNTY	MEN	LOCATION	TYPE
Molybdenum		American Smelting & Refining Co. N. 2900 Nevada Spokane, Washington	Little Boulder Creek (Inactive)		Custer		T8N, R16E, S3	O.P.
Molybdenum	Active	Centennial Development Co. Box 41 Clayton, Idaho 83227	Cyprus	X	Custer	14	T11N, R16E, S14	U.G.
Molybdenum	Inactive	Norandex, Inc. 345 S. Union, Suite 109 Denver, Colorado 80228	Little Fall Cr.		Custer		T6N, R19E, S7, 8, 17 & 18	
Molybdenum	Inactive	Joe Shurtz & C. A. Hoffman 4053 Upham St. Wheatridge, Colorado 80033	Big Joe & Ann Groups		Custer		T6N, R19E, S16, 17, 20 & 21	
Molybdenum	Inactive	Elmer Swanson Clayton, Idaho 83227	Railroad Ridge		Custer		T10N, R16E, S32	
Molybdenum	Inactive	Vernon Taylor & Assoc. Denver Club Bldg. 518 - 17th Denver, Colorado 80202	Big & Little Boulder Creek		Custer		T9N, R16E, S2, 11, 14, 23, & 26	U.G.
Molybdenum	Inactive	Elton Vroman & Assoc. Siphon Road Pocatello, Idaho 83201	10 Meadow View Lode Claims		Custer		T9N, R16E, S15	
Molybdenum	Inactive	Bradley Mining Co. 582 Market St. - #302 San Francisco, Calif. 94104	Ima		Lemhi	0	T14N, R23E	U.G.
Molybdenum	Inactive	Idaho Mining & Smelting Co. 609 Idaho Bldg. Boise, Idaho 83702			Washington	0	In Heath mining district	U.G.
Thorium	Inactive	Golden Sceptre Mining Co., Ltd. 13119 E. Main Spokane, Washington 99216			Boundary	0	Near Port Hill. T65N, R1W	U.G.

COMMODITY	STATUS	NAME	MINE	INSP.	COUNTY	MEN	LOCATION	TYPE
Thorium	Inactive	Nuclear Fuels & Golden Pleasure Mining Co., Inc. Box 1232 Salmon, Idaho 83467			Lemhi	0	35 mi. from Salmon	U.G.
Thorium	Inactive	Nuclear Fuels & Rare Metals Corp. Box T Salmon, Idaho 83467			Lemhi	0	In Lemhi Pass area near Salmon	U.G.
Thorium	Inactive	Salmon River Uranium Develop. Co. Box 358 Salmon, Idaho 83467	Sunnyside		Lemhi	0	Mineral Hill mining district near North Fork, Idaho	U.G.
Thorium	Inactive	THO <sub>2</sub> & Rare Metals Expl., Inc. Box 1232 Salmon, Idaho 83467			Lemhi	0	35 mi. from Salmon	O.P.
06 Tungsten	Inactive	John Rosenkranze Mackay, Idaho 83251	Wild Horse Leased to: Cordero Mining Co.		Custer		T9N, R18E, S24 and T5N, R20E, S9	U.G.
Tungsten	Active	Salmon River Scheelite Corp. Box 3 Clayton, Idaho 83227	Buckskin Tungsten Jim	X X	Custer	2 2	T21N, R16E, S34 T21N, R16E, S28 Leased to R. M. Barrett	U.G. U.G.
Tungsten	Inactive	Sanders Associates, Inc. 10 W. Center St. Kaysville, Utah 84037	Wild Horse		Custer	0	T5N, R20E	U.G.
Tungsten	Active	Electronic Metals, Inc. 2808 Ona Boise, Idaho 83705	Golden Gate Tungsten		Valley		T19N, R8E, S33	Mill
Tungsten	Inactive	W. & H. Hollingsworth NW 144 Stadium Way Pullman, Washington 99163	McRae Tungsten		Valley	0	T21N, R9E	U.G.

COMMODITY	STATUS	NAME	MINE	INSP.	COUNTY	MEN	LOCATION	TYPE
Uranium	Inactive	International Uranium & Exploration Co., Inc. Box 526 Fruitland, Idaho 83619			Boundary	0	Near Porthill	O.P.
Uranium	Inactive	AGIP Mining Co., Inc. 1221 Avenue of the Americas New York, N. Y. 10020			Custer Lemhi	0 0	Exploration stage	
Vanadium	Active	Earth Sciences, Inc. Earth Sciences Road Golden, Colorado 80401	Bloomington	X	Bear Lake	3	T14S, R43E	O.P.
Vanadium	Active	Kerr-McGee Corporation Box 478 Soda Springs, Idaho 83276	Obtained from: Monsanto Slag Pile	X	Caribou	52	T19N, R8E, S15	Plant

## SMELTERS, REDUCTION WORKS AND PROCESSING PLANTS

<u>Name</u>	<u>Type of Operation</u>	<u>Inspection</u>	<u>Number of Men</u>	<u>Location</u>	<u>County</u>
FMC Corporation Box 4111 Pocatello, Idaho 83201	Phosphate Processing	Inspected	530	Pocatello	Bannock
J. R. Simplot Company Simplot Building Boise, Idaho 83702	Phosphate Processing	Inspected	525	Pocatello	Bannock
Kerr-McGee Corporation Box 478 Soda Springs, Idaho 83276	Vanadium Pentoxide Reduction	Inspected	52	Soda Springs	Caribou
Monsanto Company P. O. Box 816 Soda Springs, Idaho 83276	Phosphate Processing	Inspected	370	Soda Springs	Caribou
The Bunker Hill Company P. O. Box 29 Kellogg, Idaho 83837	Electrolytic Zinc Plant	Inspected	475	Smeltonville	Shoshone
The Bunker Hill Company P. O. Box 29 Kellogg, Idaho 83837	Lead Smelter	Inspected	275	Smeltonville	Shoshone
The Bunker Hill Company P. O. Box 29 Kellogg, Idaho 83837	Acid Plants	Inspected	40	Smeltonville	Shoshone
The Bunker Hill Company P. O. Box 29 Kellogg, Idaho 83837	Shops	Inspected	155	Smeltonville	Shoshone

I N D E X

A. A. Redimix . . . . .	17	Bell Mining Co. . . . .	55
"A" Black Cat S & G . . . . .	14	Benewah County Hwy. Dept. . . . .	25
"A" Busy Bee S & G . . . . .	14	Benton Mining Company. . . . .	55
A. P. Green Refractories . . . . .	82	Beymers Paving, Inc. . . . .	21, 24
Aberdeen Idaho Mining Co. . . . .	53	Big Creek Apex Mining Co. . . . .	55
Abot Mining Company . . . . .	53	Big T Mines, Inc. . . . .	44
Ada County Road Dept. . . . .	25	Binarch Creek Mining Co. . . . .	42
Ada Sand & Gravel . . . . .	14	Bingham County Commrs. . . . .	25, 38
Adams County Highway Dept. . . . .	25	Birch Creek Mining Co., Ltd. . . . .	45
AGIP Mining Co., Inc. . . . .	91	Bismarck Mining Company . . . . .	55
Agricultural Products, Inc. . . . .	84	Black Bear Mines Company . . . . .	55
Alice Consolidated Mines . . . . .	54	Blackhawk Mng. & Develop. . . . .	55
Allied Silver Lead Company . . . . .	54	Blue Eagle Mining Company . . . . .	55
Amador Gold & Silver . . . . .	47	Boise County Hwy. Dept. . . . .	25
Amalgamated Sugar Company . . . . .	83	Boise Paving & Asphalt . . . . .	14, 17
Ancor, Inc. . . . .	17, 86	Boise Ridge Mng. & Mllg. . . . .	41, 79
American Silver Mining Co. . . . .	54	Boise Sand & Gravel . . . . .	14
American Smelting & Refining . . . . .	54, 89	Boise Stone & Tile . . . . .	36, 37
Anaconda Company . . . . .	54, 81, 84	Boise Valley S & G . . . . .	14
Andrus, Charles . . . . .	80	Bonanza Gold, Inc. . . . .	56
Antimony . . . . .	87	Bonnors Ferry Redi Mix . . . . .	17
Antimony Gold Ores, Inc. . . . .	75	Bonneville County Engineer . . . . .	26
Antimony Mng. & Mllg. . . . .	87	Border Silver Mines, Inc. . . . .	56
Appollo Gold Mines, Inc. . . . .	48	Boulder Creek Mining Co. . . . .	56
Arco Mining Company . . . . .	80	Boundary County Road . . . . .	26
Asher Leasing Company . . . . .	54	Bowes, W. A. . . . .	52
Asphalt Paving & Construction . . . . .	14	Bowman Sand & Gravel . . . . .	17
Atlas Mining Company . . . . .	54	Bradley Mining Co. . . . .	76, 87, 89
Atlas Sand & Gravel . . . . .	22	Bristol N.W. Silica . . . . .	24
Ausich, Joe . . . . .	45, 88	Buckskin Gold & Silver . . . . .	56
Auxer Gold Mines, Inc. . . . .	42	Buhl Highway District . . . . .	26
B & N Construction . . . . .	20	Bull Moose Mines, Inc. . . . .	80
Bailey Leasing Company . . . . .	54	Bullion Lode Silver Mng. . . . .	48
Baird Sullivan Mining Co. . . . .	55	Bullion Mining Company . . . . .	56
Banner Idaho Mines, Inc. . . . .	55	Bunker Chance Mining Co. . . . .	56
Banner Mng. & Mllg. . . . .	52	Bunker Hill Co., The . . . . .	56, 92
Bannock Apex Mines, Inc. . . . .	53, 81	Bureau of Public Roads . . . . .	26, 38
Bannock Chemical Company . . . . .	85	Burke Mining Company . . . . .	56
Bannock County Engineer . . . . .	25	Burley Brick & Sand . . . . .	81
Bannock Paving . . . . .	23	Burley Highway District . . . . .	26
Bargain Supply Company . . . . .	16	Burns Bros. Concrete Products. . . . .	17
Barite . . . . .	81	Butler Ore Company . . . . .	39
Barnes, Inc. . . . .	37	Butte County Hwy. Dept. . . . .	27
Beacon Light Mining Co. . . . .	55	C. V. Concrete Products . . . . .	19
Bear Lake Concrete Co. . . . .	15	C & W Sand & Gravel . . . . .	24, 88
Bear Lake County Hwy. Dept. . . . .	25	Cal Creek Placers . . . . .	80
Bear Valley Mining Co. . . . .	75	Calbar Company . . . . .	50
Beardsley Gulch Mining Co. . . . .	45	Caledonia Mining Company . . . . .	57
Bedal Brs. . . . .	41	Caledonia Silver-Lead Mng. . . . .	57
Bell, Fred . . . . .	79	Callahan Consolidated Mines . . . . .	57
		Callahan Mining Corp. . . . .	57

Camas County Highway . . . . .	27	Custer County Hwy. Dept. . . . .	27
Canyon County Road . . . . .	27	Day Mines, Inc. . . . .	59, 87
Canyon Creek Mng. Co., Inc. . . . .	41	DeAtley Corp. . . . .	16, 19, 22, 37
Canyon Silver Mines, Inc. . . . .	57	Dewey Mining Company . . . . .	76
Capitol Silver Mines, Inc. . . . .	57	Diamond Drill Contractors . . . . .	59
Caribou County Hwy. Dept. . . . .	27	Dobson Pass Lead & Silver . . . . .	59
Caribou Ghost Mng. Co. . . . .	79	Dolan, J. E. . . . .	76
Carl Carbon, Inc. . . . .	21, 37	Donaho, Casey & Sons . . . . .	23
Carson Divide Mining Co. . . . .	52	Douglas Mining Company . . . . .	59
Casey, H. J. . . . .	41	Dravo, Inc. . . . .	84
Castle, George . . . . .	80	Eagle American Mines, Inc. . . . .	44
Cement . . . . .	81	Earth Resources Company . . . . .	52, 60
Center Star Gold Mines, Inc. . . . .	48	Earth Sciences, Inc. . . . .	84, 91
Centennial Development Co. . . . .	82, 89	East Coeur d'Alene Silver . . . . .	60
Central Mining Company . . . . .	57	Eastern Star Mining Co. . . . .	60
Central Pre-Mix Concrete . . . . .	21, 22	Echo Mining Co., Ltd. . . . .	60
Century Silver Mines, Inc. . . . .	45, 52	Electronic Metals, Inc. . . . .	76, 90
Champion Gold & Silver . . . . .	57	Elmer, Lewis . . . . .	79
Chester Mining Company . . . . .	57	El Paso Natural Gas Co. . . . .	88
Chimney Butte Mining Company . . . . .	39	Emerald Creek Garnet Milling . . . . .	82
Christopherson, Chris . . . . .	57	Empire Gold Mines, Inc. . . . .	60
Cimarron Silver Mine . . . . .	39	Empire Mines Company . . . . .	53
Circle B Crushing . . . . .	15, 36	Epic Silver . . . . .	60
Cities Service Minerals Corp. . . . .	58	Ethyl Corporation . . . . .	83
City Transfer Ready Mix . . . . .	20	Eureka Development Co., Ltd. . . . .	39
Clark County Auditor . . . . .	27	Eureka Silver King Mines . . . . .	76
Clay . . . . .	81	Evolution Mining Co. . . . .	60
Clayton Silver Mines . . . . .	45	EXPLO, Inc. . . . .	48
Clearwater County Hwy. Dept. . . . .	27	Exposition Mining Company . . . . .	60
Clearwater Mines, Inc. . . . .	58	Fahey Group Mines, Inc. . . . .	60
Clements Ready Mix . . . . .	14	Fairfield Mining Co., Inc. . . . .	80
Clutis, Wayne . . . . .	50	Fatalities . . . . .	6
Cobalt . . . . .	87	Filer Hwy. District . . . . .	27
Coeur d'Alene Crescent . . . . .	58	Flojodo Mines, Inc. . . . .	60
Coeur d'Alene Mines Corp. . . . .	58	Fluorspar . . . . .	82
Coeur d'Alene Mining Co. . . . .	58	FMC Corporation . . . . .	92
Coeur d'Alene Premier Mng. . . . .	58	Ford Ready Mix . . . . .	24
Coeur d'Alene Silver & Gold . . . . .	58	Fourth of July Silver . . . . .	61
Coeur d'Alene Syndicate . . . . .	58	Franklin County Hwy. Dept. . . . .	28
Colonial Concrete, Inc. . . . .	24	Frontier Silver Mines . . . . .	61
Colson, Lee . . . . .	79	Franciskovic, Z. A. . . . .	81
Come Back Mining Company . . . . .	41	G & B Ready Mix . . . . .	18
Commonwealth Silver, Inc. . . . .	58	Garner Concrete Co., Inc. . . . .	19
Conjecture Mines, Inc. . . . .	43	Garnet . . . . .	82
Consolidated Concrete Co. . . . .	14	Gem County Hwy. Dept. . . . .	28
Consolidated Silver Corp. . . . .	58, 59	Gem State Enterprise . . . . .	19
Constitution Mining Company . . . . .	59	Gem State Gold, Inc. . . . .	80
Copper . . . . .	39	Gem State Silver, Inc. . . . .	61
Copper Camp Consolidated . . . . .	76	Gemstones . . . . .	82
Copper Spring Mining Co. . . . .	52	Gill, Edward . . . . .	41
Cougar Silver Mining Co. . . . .	59	Glahn, Eugene . . . . .	39
Crow Rock Products . . . . .	37	Glen Silver Mining Corp. . . . .	53
Crystal Sand Company . . . . .	22	Golconda Mining Corporation . . . . .	61
CSC Mining Company . . . . .	56	Gold . . . . .	39
Cuba Mining Company . . . . .	59	Gold Chain, Inc. . . . .	61

Gold Canyon Mining Co., Inc. . . . .	50	Idaho Concrete Pipe Co. . . . .	18, 19
Gold Fork Concrete Products . . . . .	24	Idaho Consolidated Mines, Inc. . . . .	51
Gold Leaf Mining Corp. . . . .	61	Idaho Copper & Gold, Inc. . . . .	63
Gold Producers, Inc. . . . .	50	Idaho Dept. of Highways . . . . .	28, 29, 30, 31, 32, 33, 85
Gold Run Gulch Mines, Inc. . . . .	61	Idaho Exploration Company . . . . .	40
Golden Age Mining Properties . . . . .	41	Idaho Falls Brick & Tile . . . . .	81
Golden Arrow Mining Co. . . . .	45	Idaho Garnet Abrasive Co. . . . .	82
Golden Chest, Inc. . . . .	61	Idaho General Mines, Inc. . . . .	63
Golden Reef Mining Company . . . . .	76	Idaho Gold Chief Mng. Co. . . . .	47
Golden Sceptre Mining Co., Ltd. . . . .	89	Idaho Independent Mng. Co. . . . .	77
Golden Sunrise Mining Co. . . . .	47	Idaho Lakeview Mines Co. . . . .	43
Gordon Paving Company . . . . .	18	Idaho Leadville Mines Co. . . . .	63
Government Gulch Mining Co. . . . .	61	Idaho & Los Angeles Mng. . . . .	63
Granada Lead Mines, Inc. . . . .	61	Idaho Minerals Company . . . . .	77
Grandview Metals . . . . .	50	Idaho Mining Company . . . . .	51, 87
Graphite . . . . .	83	Idaho Mining & Smelting . . . . .	78, 89
Great Eastern Mining Co., Ltd. . . . .	62	Idaho Montana Silver, Inc. . . . .	63
Green Hill Cleveland Mining Co. . . . .	62	Idaho Peat Industries, Inc. . . . .	84
Gypsum . . . . .	83	Idaho Portland Cement . . . . .	36, 81
H & H Contractors . . . . .	37	Idaho Rand, Inc. . . . .	48
H, H & R Exploration & Develop. . . . .	41	Idaho Silver, Inc. . . . .	64
Hall Mtn. Silver Mines, Inc. . . . .	44	Idaho Travertine Corp. . . . .	36
Hampton Redi Mix . . . . .	16	Idaho Willow Creek Mng. Co. . . . .	64
Hansen, Jim . . . . .	83	Idora Silver Mines, Inc. . . . .	64
Hansen, Spenst . . . . .	82	Independence Lead Mines, Inc. . . . .	64
Hansey Copper & Gold Mines . . . . .	62	Industrial Construction Co. . . . .	19
Hayden Hill Consolidated . . . . .	62	Inland Asphalt Company . . . . .	21
Hawaii National Corp. . . . .	39	Inspiration Development Co. . . . .	78
Heavy Metals, Inc. . . . .	45	Inspiration Lead Co., Inc. . . . .	64
Hecla Checkmate Mng. & Dev. . . . .	47	International Minerals & . . . . .	85
Hecla Mining Company . . . . .	62	Chemicals . . . . .	85
Helena Silver Mines . . . . .	62	International Mines Ltd. . . . .	64
Hercules Extension, Inc. . . . .	62	International Uranium & Expl. . . . .	91
Hermada Mining Co. . . . .	87	Interpace Corporation . . . . .	81
Hess Pumice Products . . . . .	86	Introduction . . . . .	v
Highland Surprise Con. Mng. . . . .	62	Iron Mask Mining Co., Inc. . . . .	43
Hoffbuhr Ready Mix, Inc. . . . .	18	Iron Mountain Mng. Co. . . . .	88
Hoffman, C. A. . . . .	89	Iron Ore . . . . .	88
Holcomb Co., Ltd. The . . . . .	76	Ivanhoe Mining Co., Inc. . . . .	64
Hollingsworth, Howard . . . . .	62, 90	Ivers Mining Company . . . . .	46
Hollingsworth, Wiley . . . . .	62, 90	J & C Construction Co. . . . .	23
Holmes Construction Co., Inc. . . . .	16, 18	J & J Construction . . . . .	37
Homestake Mining Company . . . . .	76	Jeppeson & Mitchell . . . . .	45
Homestake Silver-Lead Mng. . . . .	63	Jeppesen & Wilson Company . . . . .	82
Honolulu Copper Co., Inc. . . . .	46	Jones, Sid . . . . .	64
Hoodoo Mining Corporation . . . . .	46	Jongault Mines, Inc. . . . .	48
Hope Chest Silver, Inc. . . . .	63	Kaniksu American Mng. Co. . . . .	43
Hopkins, Lee . . . . .	46	Kaniksu Mng. Co., Inc. . . . .	43
Hunter Creek Mining Co. . . . .	63	Kelly Mining Company . . . . .	64
Hunziker Sand & Gravel . . . . .	15	Kennaday Paving Company . . . . .	15, 17, 22
Hypothek Mng. & Mfg. . . . .	63	Kennedy, W. K. . . . .	75
Ida-Lew Construction Company . . . . .	21	Kenny Nuclear & Western Silver . . . . .	51
Ida-Mica Industrial Minerals . . . . .	84	Kerr-McGee Corp. . . . .	83, 91, 92
Idaho Antimony Company . . . . .	87	Kiewit, Peter & Sons . . . . .	23

Kimball, Carwin J. . . . .	44	Minidoka County Hwy. Dept. . .	34
Kimberly Gold Mines, Inc. . . .	48	Minidoka Mining Company . . .	40
King of Pine Creek Mining . . .	64	Mineral Industry of Idaho in	
King Lodes, Inc. . . . .	42	1973 . . . . .	1
Kloepfer Sand & Gravel . . . .	22	Mint Grade Mining Company . .	50
Kodiak Mines, Inc. . . . .	65	Missouri-Idaho Mng. & Smltg. .	77
Kootenai Copper Silver Mines .	44	Moen, Inc. . . . .	21
Kootenai County Hwy. Dept. . .	33	Molybdenum . . . . .	88
Krause, Bruno . . . . .	48	Monida Nuclear Fuel & Silver .	51
Kyanite . . . . .	83	Monroc, Inc. . . . .	15, 16, 17, 20, 24
LaFlora Mining Co., Inc. . . . .	42	Monsanto Company . . . . .	36, 85, 92
Lake Gulch Silver Mines . . . .	65	Montgomery Mines . . . . .	44
Lakes Highway District . . . . .	33	Moon Gulch Mines, Inc. . . . .	66
Lead . . . . .	39	Moonlight Mining Company . . .	66
Leesburg Lode & Placer . . . . .	51	Moosman, Earl . . . . .	47
Lemhi County Highway Dept. . .	34	Morning Mist Mining Co. . . . .	42
Lewiston Pre-Mix Company . . . .	23	Morrison-Knudsen Co., Inc. . .	15
Lime . . . . .	83	Morse Mining Company . . . . .	48
Linscott, Frank . . . . .	16	Mountain Fuel Supply Co. . . . .	85
Little Joe Mining Company . . . .	49	Mountain Home Hwy. Dept. . . .	34
Little Queen Mines, Inc. . . . .	47	Muldoon Barium Company . . . .	40
Lombardy Mining & Milling . . .	65	Mullan, Bill . . . . .	66
Lone Pine Equipment . . . . .	21, 23	Murtaugh Hwy. District . . . .	34
Longyear Drilling Co. . . . .	46	Myko, Inc. . . . .	46
Lookout Mtn. Mng. & Millg. . . .	65	N. A. Degerstrom, Inc. . . . .	21
Louisiana Pacific Inc. . . . .	37	N L Industries . . . . .	82
Low's Sand & Gravel . . . . .	22	Nabob Silver-Lead Mines . . . .	66
Low Boy Mining Group . . . . .	44	National Mng. & Development . .	42
Lucky Friday Extension Co. . . .	65	National Silver Lead Mng. . . .	66
Lucky Friday Silver Lead Mines	65	Neeser Construction Company . .	39
Luscomb Mining Corp. . . . .	44	Nelson-Deppe, Inc. . . . .	18
Magdalena Mining Company . . . .	40	Nelson, R. O. . . . .	77
Magic Valley Sand & Gravel 19,	22	Nelson Sand & Gravel . . . . .	15
Magna Mining Company . . . . .	65	New Hilarity Mining Co. . . . .	66
Magnum Tin Corp. . . . .	49	Newcomb, Robert . . . . .	80, 88
Martin, Charles . . . . .	47	Newport Concrete Company . . . .	16
Mascot Silver-Lead Mines . . . .	65	Nez Perce County Engineer . . .	34
Materne Bros. . . . .	36	Niagara Mining & Development . .	66
McGregor Mining Co. . . . .	65	Nine Corporation . . . . .	67
MCH, Inc. . . . .	14	Non-Metallics, Inc. . . . .	84
McLin-Asher . . . . .	65	Noranda Exploration, Inc. . . . .	67
Mercury . . . . .	88	Norandex, Inc. . . . .	89
Merger Mines, Inc. . . . .	40, 50, 51	North Franklin Mining Co. . . .	67
Merrill, J. K. & Sons . . . . .	19	North Star Mining Company . . .	67
Messley, Lowell . . . . .	49	Northern Light Mng. & Millg. . .	67
Metropolitan Mines Co., Ltd. . .	66	Northwest Mng. Co., Inc. . . . .	87
Mi Oro Mining Company . . . . .	79	Nuclear Fuels & Golden Pleasure	
Mica . . . . .	84	Mining Co., Inc. . . . .	90
Midvale Mining Company . . . . .	66	Nuclear Fuels & Rare Metals . .	90
Military Mng. & Millg. Co., Ltd	66	Nuclear Silver Corp. . . . .	67
Miller, J. L. . . . .	79	Old Channel Placers, Inc. . . . .	48
Milwaukee Mines, Inc. . . . .	43	Olsen, Joel C. . . . .	83
Mine Finder, Inc. . . . .	53	Oneida Perlite Corp. . . . .	84
Minerals Extraction, Inc. . . . .	80	Oom Paul Consolidated Mng. . . .	67
Mines, Inc. The . . . . .	40	Oregon-Idaho Silver Gold Mines	67

Orofino Lime Products, Inc. . . . .	84	Salmon River Scheelite . . . . .	90
Osburn Silver, Inc. . . . .	67	Salmon River Uranium . . . . .	90
P & B Silver Mines, Inc. . . . .	44	Sand and Gravel-Commercial . . . . .	14
Painted Desert Uranium & Oil . . . . .	67	Sand and Gravel-Non Commercial . . . . .	25
Panhandle Drilling & Blasting . . . . .	21	Sanders Associates . . . . .	90
Park Copper & Gold Mining . . . . .	68	Sands, E. J. . . . .	23
Patterson, Ernest P. . . . .	49	Scenic Silver, Inc. . . . .	69
Payette County Highway Dept. . . . .	34	Schell, J. P. Gravel Co. . . . .	17
Payette Resources, Inc. . . . .	88	Seaton, E. T. . . . .	47
Peat . . . . .	84	Sentinel Silver Mines, Inc. . . . .	69
Perlite . . . . .	84	Seubert Excavators . . . . .	20
Phosphate . . . . .	84	Shields Gulch Mining Company . . . . .	69
Pierce, Clifford . . . . .	46	Shoshone Silver Mining Co. . . . .	69
Pinehurst Silver, Inc. . . . .	68	Shurtz, Joe . . . . .	89
Pioneer Mines, Inc. . . . .	68	Sidney Mining Company . . . . .	53, 69
Placer Creek Mining Company . . . . .	68	Signal Silver Gold, Inc. . . . .	69
Placers . . . . .	79	Silco Mining Co., Inc. . . . .	39
Plainview Mining Company . . . . .	68	Siler Equipment Sales . . . . .	69
Plotting With Images from Space . . . . .	4	Silver . . . . .	39
Plume Creek Silver Mines . . . . .	43	Silver Beaver Mining Co. . . . .	70
Plummer Gateway Highway Dist. . . . .	34	Silver Bell Mines, Inc. . . . .	70
Poe Asphalt . . . . .	23	Silver Belt Mines, Inc. . . . .	70
Powell, Roy . . . . .	49	Silver Bowl, Inc. . . . .	70
Power Highway District . . . . .	34	Silver Buckle Mines . . . . .	70
Princeton Mining Company . . . . .	68	Silver Butte Mining Co. . . . .	43
Processing Plants . . . . .	92	Silver Chief Mining Co. . . . .	42
Producer's Pumice . . . . .	86	Silver Crest Mines, Inc. . . . .	70
Profile Mines & Minerals . . . . .	77	Silver Crystal Mines, Inc. . . . .	70
Profile Tamarack Mines . . . . .	77	Silver Dollar Mining Co. . . . .	70
Pullman Brick Company . . . . .	81	Silver Eagle Mining Co. . . . .	70
Pumice . . . . .	85	Silver Enterprise Mining Corp. . . . .	53
Quantex Corporation . . . . .	51	Silver Fortune Mines, Inc. . . . .	70
Quartzburg Mining . . . . .	79	Silver Futures, Inc. . . . .	71
Quinn Robbins Co., Inc. . . . .	15	Silver Hill Mines, Inc. . . . .	71
R-G Mining Company . . . . .	68	Silver Key Mining Co., Inc. . . . .	71
Rambo Crushing Company . . . . .	18	Silver King Mines, Inc. . . . .	39
Ramshorn Mines Company . . . . .	46	Silver Lamb Mining Corp. . . . .	46
Reduction Works . . . . .	92	Silver Moor, Inc. . . . .	71
Reed Mining Company . . . . .	40	Silver Mtn. Lead Mines, Inc. . . . .	71
Reindeer-Queen Mining Co. . . . .	68	Silver Peak Mining Co., Inc. . . . .	71
Rhode Island Mining Company . . . . .	68	Silver Pick Mining Co. . . . .	51
Rice, Earl . . . . .	49, 79	Silver Rich Mines, Inc. . . . .	71
Rice, Robert A. . . . .	68	Silver Rock Mining Co., Inc. . . . .	71
Riener Bros. Pre-Mix . . . . .	20	Silver Scott Mines, Inc. . . . .	71
Rock Creek Mining Co. . . . .	69	Silver Seal, Inc. . . . .	71
Rosenkranze, John . . . . .	90	Silver Shadow Mines, Inc. . . . .	72
Rowland Bros. . . . .	24	Silver Shoshone Mining Co. . . . .	72
Royal Apex Silver, Inc. . . . .	69	Silver Soldier, Inc. . . . .	53
S & V Construction Company . . . . .	16	Silver Spar Mining Co. . . . .	40
Sachem Prospects Division . . . . .	87	Silver Star Mines, Inc. . . . .	72
St. Elmo Silver Mines Corp. . . . .	69	Silver Still Mining Co. . . . .	78
Salmon Canyon Copper Company . . . . .	51	Silver Strand Mining Co. . . . .	50
Salmon, City of . . . . .	35	Silver Strike Mining Co., Inc. . . . .	72
Salmon River Redi Mix . . . . .	19	Silver Sun, Inc. . . . .	72
Salmon River Sand & Gravel . . . . .	20	Silver Surprise, Inc. . . . .	72

Silver Syndicate, Inc. . . . .	72	Twin Falls Construction Co. . . . .	20
Silver Trails Mines, Inc. . . . .	72	Twin River Development . . . . .	77
Silverfields Corp. . . . .	43	Uhl, Chester . . . . .	74
Silverore Mines, Inc. . . . .	72	Ultican Minerals Ltd. . . . .	44
Silverstone Mines, Inc. . . . .	72	Union Carbide Corp. . . . .	43, 50
Simi, Hugo A. . . . .	51	United Gold & Silver . . . . .	49
Simplot, J. R. Co. . . . .	81, 82, 84, 85, 92	United Mines, Inc. . . . .	74
Sink Creek Mining Co. . . . .	46	U.S. Antimony Corp. . . . .	47
Sluder Construction . . . . .	81	U.S. Army Corp of Engineers . . . . .	35
Smelter . . . . .	92	U.S. Forest Service . . . . .	35, 38
Smith Creek Hydraulic Mining . . . . .	77	U.S. Silver & Mining Co. . . . .	45
Smith Sand & Gravel . . . . .	20	Universal Exploration . . . . .	52
South Atlas Mines, Inc. . . . .	73	Uranium . . . . .	91
Spanallen Mining Ltd. . . . .	45	Utah-Idaho Con. Uranium . . . . .	74
Spencer Opal Mines . . . . .	82	Utah-Idaho Sugar Company . . . . .	83
Spokane National Mines . . . . .	73	Vail, L. W. Co. . . . .	15, 16, 19
Square Deal Mining & Milling . . . . .	73	Valley Sand & Gravel . . . . .	21
Stauffer Chemical Company . . . . .	85	Vanadium . . . . .	91
Steen, William . . . . .	52	Vieco Resources, Ltd. . . . .	78
Sterling Mining Company . . . . .	73	Vindicator Silver-Lead . . . . .	74
Stevens Peak Mines . . . . .	73	Virginia City Gold Mines . . . . .	49
Stewart, Arlee . . . . .	17	Vroman, Elton & Associates . . . . .	89
Stone-Commercial . . . . .	36	Vulcan Silver Mining Co. . . . .	88
Stone-Non Commercial . . . . .	38	Walker Mining Company . . . . .	78
Strang Sand & Gravel . . . . .	18	Wall Street Mining Company . . . . .	74
Striker Morning Lease Co. . . . .	73	Wallace Diamond Drill Co. . . . .	74
Success Mining Co., Ltd. . . . .	73	Wallace Mining Co., The . . . . .	75
Summit Silver, Inc. . . . .	73	Wallace Silver, Inc. . . . .	75
Sun Valley Expl. & Develop. . . . .	83	Walters Ready Mix Concrete Co. . . . .	22
Sungold Mines, Inc. . . . .	49	War Eagle Mining Co., Inc. . . . .	49
Sunnyside Consolidated Mining . . . . .	77	Ward, Jett . . . . .	52
Sunset Mining Assn. . . . .	39	Washington Construction Co. . . . .	85
Sunset Silver, Inc. . . . .	73	Washington Peak Mining . . . . .	47
Sunshine Consolidated, Inc. . . . .	73	Weatherby, W. H. . . . .	87
Sunshine Mining Company . . . . .	74, 87	Wedron Silica Division . . . . .	20
Superior Mining Company . . . . .	53	Weidman Faith Mining Co., Inc. . . . .	80
Superior Silver Mines, Inc. . . . .	74	Weiser Redy Mix . . . . .	23
Swanson, Elmer . . . . .	89	Welker & Hutton . . . . .	42
Swisher, Joe . . . . .	49	Wells Cargo, Inc. . . . .	37
T & B Mining . . . . .	52	Western Block, Inc. . . . .	86
Taylor, Vernon & Associates . . . . .	89	Western Silver-Lead Corp. . . . .	75
Tennessee Dray, Inc. . . . .	20	Whitney, G. M. . . . .	42
Tepe Mining Company . . . . .	83, 88	Wilkerson, David . . . . .	75
Teton County Highway Dept. . . . .	35	Wilson, E. J. & Sons . . . . .	83, 88
THO <sub>2</sub> & Rare Metals Expl. . . . .	90	Wolverine Development Co. . . . .	42
Thorium . . . . .	89	Wright Construction Co. . . . .	18
Tip Top Silver, Inc. . . . .	74	Wyoming Mng. & Mllg. . . . .	75
Toledo Mining Company . . . . .	74	Yancey, William . . . . .	41
Treasure Canyon Calcium Co. . . . .	36	Yardley Drilling Co., Inc. . . . .	16
Tri State Exploration, Inc. . . . .	40	Yreka United, Inc. . . . .	75
Triangle Mining Company . . . . .	85	Zanetti Bros. . . . .	23, 75
Triple "C" Concrete . . . . .	22	Zanetti, H. . . . .	75
Triumph Mineral Company . . . . .	41	Zinc . . . . .	39
Tungsten . . . . .	90		



