

# Idaho BLM AML Program

November 2005  
Update –

**Water Quality**



**Safety Hazards**





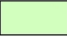

## AML Priority areas:

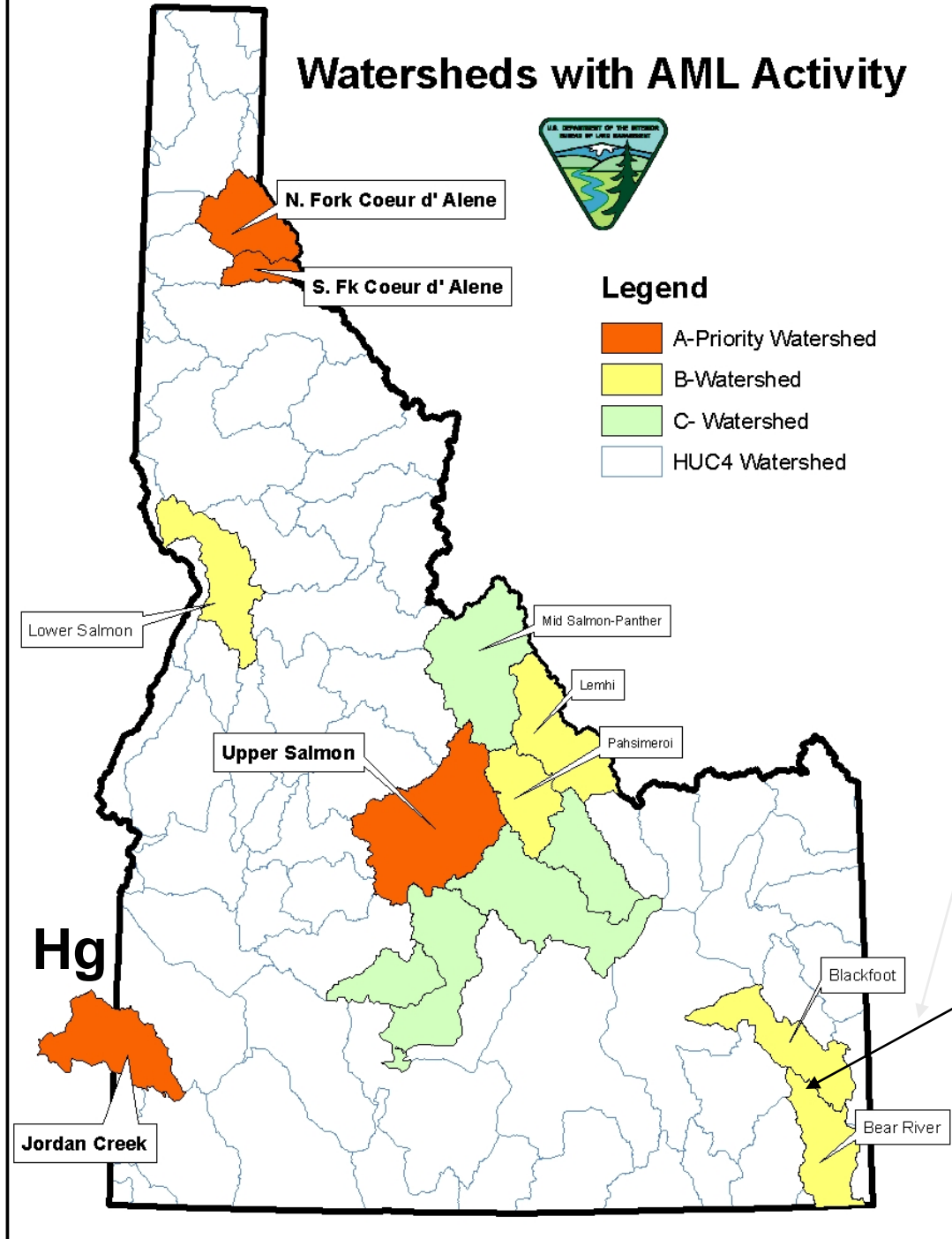
- **Recreational use**
- **Urban Expansion**
- **Salmon, Steelhead, and Bull trout fisheries**

# Watersheds with AML Activity



## Legend

-  A-Priority Watershed
-  B-Watershed
-  C- Watershed
-  HUC4 Watershed



Selenium contamination/  
Phosphate  
Mines

# National Academy of Sciences - Lessons Learned from the Coeur d'Alene River Basin --Report July 2005

- “... **sound scientific and technical practices** to make decisions about human health risks at the Coeur d'Alene River Basin Superfund site in Idaho, and planned remediation efforts will likely reduce targeted human health risks.”
- However, there are **substantial concerns** regarding EPA's plans to **protect the environment including fish and wildlife** —plans that account for about three-fourths of the proposed \$359 million in expenditures— particularly concerns about the long-term effectiveness of the proposed environmental remediation efforts.

# Natl Acad of Science (2005)

• **Pine Creek** has already experienced considerable cleanup work, particularly by the **Bureau of Land Management**, and the creek currently supports an adult fishery, including brook trout and native cutthroat trout. The proposed remedial action for this area focuses on habitat rehabilitation and limited removals. The committee **commends EPA on efforts to restore fish habitats in upper basin tributaries.** Simply removing dissolved metals is insufficient to restore fisheries; to be successful, habitat restoration is critical...”

# FY05- Motherlode System



# FY05- We Like Mine



# Champagne Creek / Moran Tunnel System Redesign

- **Completed Redesign**  
integrating  
goundwater  
interaction with adit  
discharge treatment
- **Added limestone and  
biologic media to pond  
system**
- **Enhanced wetlands  
activity**





# FY 05 Physical Safety

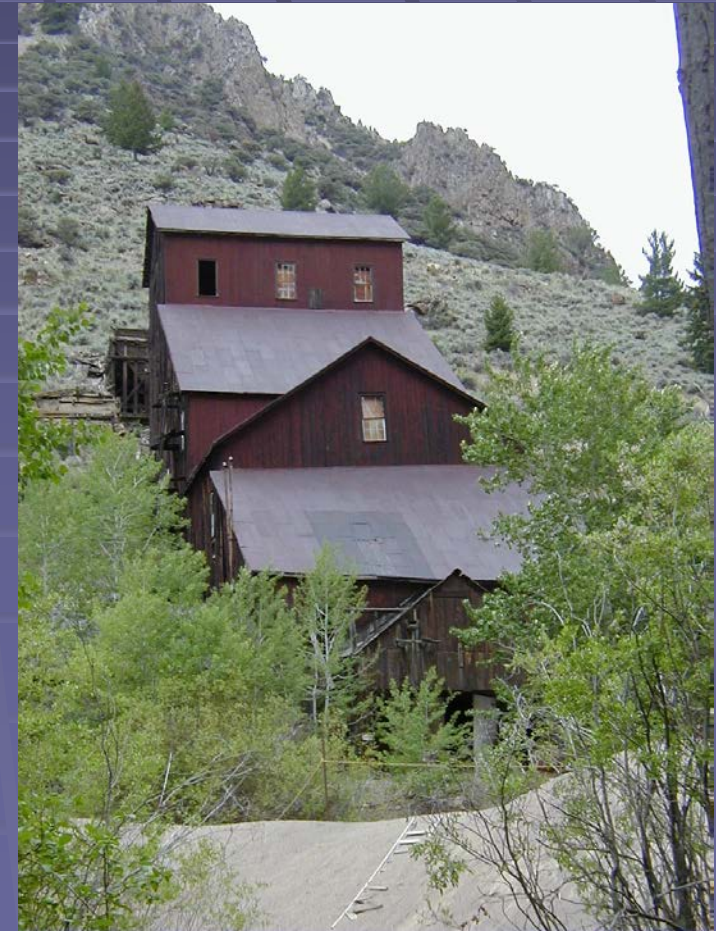
## Hazards work – Lewis & Clark Trail (SCF)

# FY 05 -Viola – Nicholia Mines Cooperative closure work with FS





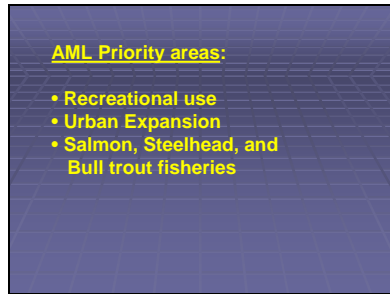
# Bayhorse Mine Area Proposed for State Park



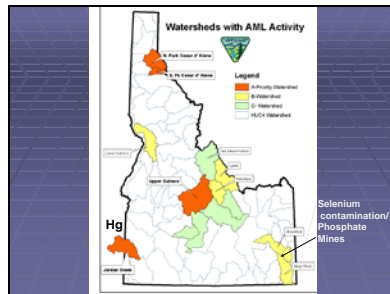
Slide 1



Slide 2



Slide 3



Slide 4

National Academy of Sciences -  
Lessons Learned from the  
Coeur d'Alene River Basin  
--Report July 2005

"... **sound scientific and technical practices** to make decisions about human health risks at the Coeur d'Alene River Basin Superfund site in Idaho, and planned remediation efforts will likely reduce targeted human health risks."

"However, there are **substantial concerns** regarding EPA's plans to **protect the environment including fish and wildlife** —plans that account for about three-fourths of the proposed \$359 million in expenditures— particularly concerns about the long-term effectiveness of the proposed environmental remediation efforts."

Slide 5

Natl Acad of Science (2005)

"**Pine Creek** has already experienced **considerable cleanup work, particularly by the Bureau of Land Management**, and the creek currently supports an adult fishery, including brook trout and native cutthroat trout. The proposed remedial action for this area focuses on habitat rehabilitation and limited removals. The committee **commends EPA on efforts to restore fish habitats in upper basin tributaries**. Simply removing dissolved metals is insufficient to restore fisheries; to be successful, habitat restoration is critical..."

Slide 6

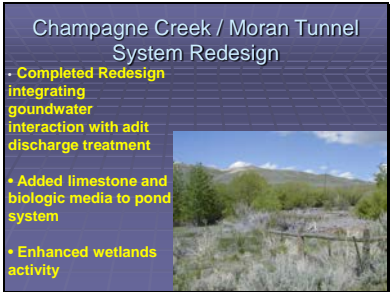
FY05- Motherlode System



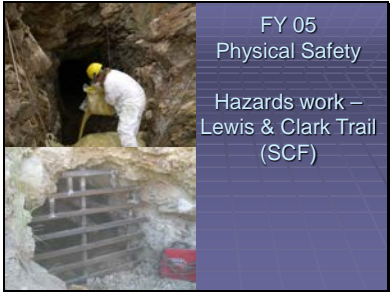
Slide 7



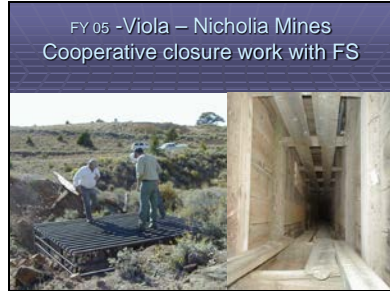
Slide 8



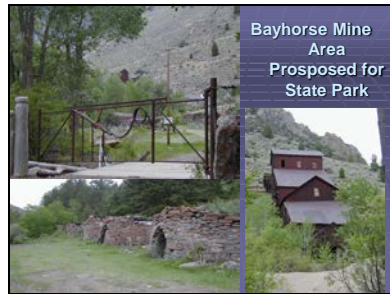
Slide 9



Slide 10



Slide 11



DEQ has completed risk assessment and environmental analyses. BLM is proposing physical safety closures on adjacent BLM lands expected to have increased ATV and other public access.