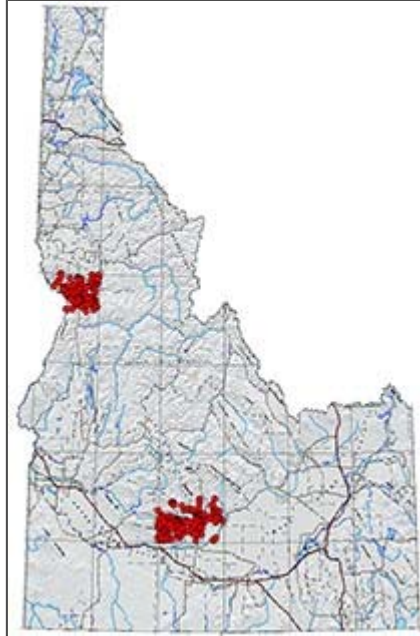


# Major Oxide and Trace Element Analyses for Igneous Rock Samples From the Grangeville and Fairfield 30 x 60 Minute Quadrangles: Idaho Geological Survey Digital Analytical Data 12 (DAD-12): Version 8.2017.1

Excel Spread Sheet Version 14



## Tags

Major Oxide and Trace Element Analyses for Igneous Rock Samples, Grangeville, Fairfield, Idaho

## Summary

This file provides analysis of whole-rock chemistry, sample locations, and lithology on 490 igneous rock samples collected from 1979 through 2012 in support of the Fairfield 30 x 60 minute and Grangeville 30 x 60 minute geologic mapping projects for the Idaho Geological Survey.

## Description

This file provides analysis of whole-rock chemistry, sample locations, and lithology on 490 igneous rock samples collected from 1979 through 2012 in support of the Fairfield 30 x 60 minute and Grangeville 30 x 60 minute geologic mapping projects for the Idaho Geological Survey. Some of these analyses have previously been published, as noted in the "reference" column, but are included here to maintain a more complete file. All of the samples were collected by personnel of the Idaho Geological Survey and the Department of Geological Sciences at Washington State University. Most of the samples are from the Idavada Group, Columbia River Basalt, Challis, Snake River or Idaho Group. The data are sorted by year collected and then sample number. For details on analytical methods at Washington State University, see: <http://cahnrs.wsu.edu/soe/facilities/geolab/technotes/>. Analyses done by ALS Chemex were done under contract to USGS and should follow the same protocols listed in USGS Bulletin 1770.

## Credits

Dennis M. Feeney, Reed S. Lewis, Dean L. Garwood and John D. Kauffman

## Use limitations

none

## Extent

<b>West</b>	-116.7165	<b>East</b>	-114.2497
<b>North</b>	46	<b>South</b>	43

## Scale Range

<b>Maximum (zoomed in)</b>	1:5,000
<b>Minimum (zoomed out)</b>	1:50,000

## ArcGIS Metadata ►

### Topics and Keywords ►

\* CONTENT TYPE Downloadable Data

*Hide Topics and Keywords ▲*

### Citation ►

**TITLE** Major Oxide and Trace Element Analyses for Igneous Rock Samples From the Grangeville and Fairfield 30 x 60 Minute Quadrangles: Idaho Geological Survey Digital Analytical Data 12 (DAD-12): Version 8.2017.1

**CREATION DATE** 2016-03-29 00:00:00

**PUBLICATION DATE** 2016-03-29 00:00:00

**PRESENTATION FORMATS** \* digital map

#### SERIES

**NAME** Digital Analytical Data

**ISSUE** DAD-12

*Hide Citation ▲*

### Citation Contacts ►

#### RESPONSIBLE PARTY

**INDIVIDUAL'S NAME** Dennis M. Feeney

**ORGANIZATION'S NAME** Idaho Geological Survey

**CONTACT'S ROLE** originator

*Hide Citation Contacts ▲*

### Resource Details ►

**DATASET LANGUAGES** \* English (UNITED STATES)

**DATASET CHARACTER SET** utf8 - 8 bit UCS Transfer Format

**STATUS** on-going

**SPATIAL REPRESENTATION TYPE** \* vector

\* **PROCESSING ENVIRONMENT** Microsoft Windows 7 Version 6.1 (Build 7601) Service Pack 1; Esri ArcGIS 10.3.1.4959

#### CREDITS

Dennis M. Feeney, Reed S. Lewis, Dean L. Garwood and John D. Kauffman

#### ARCGIS ITEM PROPERTIES

\* **NAME** DAD-12  
 \* **SIZE** 0.013  
 \* **LOCATION** file:///\\igs-rift\GeoChem\$\DAD\_publications\Pending\DAD-12\Shape\DAD-12.shp  
 \* **ACCESS PROTOCOL** Local Area Network

[Hide Resource Details ▲](#)

## Extents ►

#### EXTENT

##### GEOGRAPHIC EXTENT

##### BOUNDING RECTANGLE

**EXTENT TYPE** Extent used for searching  
**WEST LONGITUDE** -116.7165  
**EAST LONGITUDE** -114.2497  
**SOUTH LATITUDE** 43  
**NORTH LATITUDE** 46  
**EXTENT CONTAINS THE RESOURCE** Yes

#### EXTENT IN THE ITEM'S COORDINATE SYSTEM

\* **WEST LONGITUDE** -116.716110  
 \* **EAST LONGITUDE** -114.009050  
 \* **SOUTH LATITUDE** 43.025180  
 \* **NORTH LATITUDE** 45.999740  
 \* **EXTENT CONTAINS THE RESOURCE** Yes

[Hide Extents ▲](#)

## Resource Maintenance ►

#### RESOURCE MAINTENANCE

**UPDATE FREQUENCY** as needed

[Hide Resource Maintenance ▲](#)

## Resource Constraints ►

#### CONSTRAINTS

##### LIMITATIONS OF USE

none

[Hide Resource Constraints ▲](#)

## Spatial Reference ►

#### ARCGIS COORDINATE SYSTEM

\* **TYPE** Geographic  
 \* **GEOGRAPHIC COORDINATE REFERENCE** GCS\_North\_American\_1927

**\* COORDINATE REFERENCE DETAILS**

## GEOGRAPHIC COORDINATE SYSTEM

WELL-KNOWN IDENTIFIER 4267

X ORIGIN -400

Y ORIGIN -400

XY SCALE 11258999068426.238

Z ORIGIN -100000

Z SCALE 10000

M ORIGIN -100000

M SCALE 10000

XY TOLERANCE 8.9830550972891565e-009

Z TOLERANCE 0.001

M TOLERANCE 0.001

HIGH PRECISION true

LEFT LONGITUDE -180

LATEST WELL-KNOWN IDENTIFIER 4267

WELL-KNOWN TEXT GEOGCS["GCS\_North\_American\_1927",DATUM

["D\_North\_American\_1927",SPHEROID["Clarke\_1866",6378206.4,294.9786982]],PRIMEM

["Greenwich",0.0],UNIT["Degree",0.0174532925199433],AUTHORITY["EPSG",4267]]

## REFERENCE SYSTEM IDENTIFIER

**\* VALUE** 4267**\* CODESPACE** EPSG**\* VERSION** 8.6.2*Hide Spatial Reference ▲***Spatial Data Properties ►**

## VECTOR ►

**\* LEVEL OF TOPOLOGY FOR THIS DATASET** geometry only

## GEOMETRIC OBJECTS

FEATURE CLASS NAME DAD-12

**\* OBJECT TYPE** point**\* OBJECT COUNT** 500*Hide Vector ▲*

## GEOREFERENCEABLE GRID ►

TRANSFORMATION PARAMETERS ARE AVAILABLE No

CONTROL POINTS ARE AVAILABLE No

ORIENTATION PARAMETERS ARE AVAILABLE No

*Hide Georeferenceable Grid ▲*

## VECTOR ►

**\* LEVEL OF TOPOLOGY FOR THIS DATASET** geometry only

## GEOMETRIC OBJECTS

FEATURE CLASS NAME DAD-12

**\* OBJECT TYPE** point**\* OBJECT COUNT** 500*Hide Vector ▲*

GRID ►  
TRANSFORMATION PARAMETERS ARE AVAILABLE No

*Hide Grid ▲*

ARCGIS FEATURE CLASS PROPERTIES ►

FEATURE CLASS NAME DAD-12  
 \* FEATURE TYPE Simple  
 \* GEOMETRY TYPE Point  
 \* HAS TOPOLOGY FALSE  
 \* FEATURE COUNT 500  
 \* SPATIAL INDEX TRUE  
 \* LINEAR REFERENCING FALSE

*Hide ArcGIS Feature Class Properties ▲*

*Hide Spatial Data Properties ▲*

## Distribution ►

DISTRIBUTION FORMAT  
 NAME Excel Spread Sheet Version 14  
 VERSION 14

TRANSFER OPTIONS  
 \* TRANSFER SIZE 0.013

*Hide Distribution ▲*

## Fields ►

DETAILS FOR OBJECT DAD-12 ►

\* TYPE Feature Class  
 \* ROW COUNT 500

FIELD FID ►

\* ALIAS FID  
 \* DATA TYPE OID  
 \* WIDTH 4  
 \* PRECISION 0  
 \* SCALE 0  
 \* FIELD DESCRIPTION  
 Internal feature number.  
 \* DESCRIPTION SOURCE  
 Esri

\* DESCRIPTION OF VALUES  
 Sequential unique whole numbers that are automatically generated.

*Hide Field FID ▲*

## FIELD Shape ▶

- \* ALIAS Shape
- \* DATA TYPE Geometry
- \* WIDTH 0
- \* PRECISION 0
- \* SCALE 0
- \* FIELD DESCRIPTION  
Feature geometry.
- \* DESCRIPTION SOURCE  
Esri
- \* DESCRIPTION OF VALUES  
Coordinates defining the features.

*Hide Field Shape ▲*

## FIELD Sample\_No ▶

- \* ALIAS Sample\_No
- \* DATA TYPE String
- \* WIDTH 254
- \* PRECISION 0
- \* SCALE 0

*Hide Field Sample\_No ▲*

## FIELD Reference ▶

- \* ALIAS Reference
- \* DATA TYPE String
- \* WIDTH 254
- \* PRECISION 0
- \* SCALE 0

*Hide Field Reference ▲*

## FIELD Year ▶

- \* ALIAS Year
- \* DATA TYPE Double
- \* WIDTH 16
- \* PRECISION 15
- \* SCALE 6

*Hide Field Year ▲*

## FIELD Sampler ▶

- \* ALIAS Sampler
- \* DATA TYPE String
- \* WIDTH 254
- \* PRECISION 0
- \* SCALE 0

*Hide Field Sampler ▲*

FIELD [Submitter](#) ▶

- \* ALIAS [Submitter](#)
- \* DATA TYPE [String](#)
- \* WIDTH [254](#)
- \* PRECISION [0](#)
- \* SCALE [0](#)

[Hide Field Submitter](#) ▲

FIELD [100k\\_quad](#) ▶

- \* ALIAS [100k\\_quad](#)
- \* DATA TYPE [String](#)
- \* WIDTH [254](#)
- \* PRECISION [0](#)
- \* SCALE [0](#)

[Hide Field 100k\\_quad](#) ▲

FIELD [24k\\_quad](#) ▶

- \* ALIAS [24k\\_quad](#)
- \* DATA TYPE [String](#)
- \* WIDTH [254](#)
- \* PRECISION [0](#)
- \* SCALE [0](#)

[Hide Field 24k\\_quad](#) ▲

FIELD [Latitude\\_N](#) ▶

- \* ALIAS [Latitude\\_N](#)
- \* DATA TYPE [Double](#)
- \* WIDTH [16](#)
- \* PRECISION [15](#)
- \* SCALE [6](#)

[Hide Field Latitude\\_N](#) ▲

FIELD [Longitude\\_](#) ▶

- \* ALIAS [Longitude\\_](#)
- \* DATA TYPE [Double](#)
- \* WIDTH [16](#)
- \* PRECISION [15](#)
- \* SCALE [6](#)

[Hide Field Longitude\\_](#) ▲

FIELD [IGS\\_map](#) ▶

- \* ALIAS [IGS\\_map](#)
- \* DATA TYPE [String](#)
- \* WIDTH [254](#)
- \* PRECISION [0](#)
- \* SCALE [0](#)

[Hide Field IGS\\_map ▲](#)

FIELD IGS\_map\_un ►

- \* ALIAS IGS\_map\_un
- \* DATA TYPE String
- \* WIDTH 254
- \* PRECISION 0
- \* SCALE 0

[Hide Field IGS\\_map\\_un ▲](#)

FIELD Unit\_name ►

- \* ALIAS Unit\_name
- \* DATA TYPE String
- \* WIDTH 254
- \* PRECISION 0
- \* SCALE 0

[Hide Field Unit\\_name ▲](#)

FIELD Age ►

- \* ALIAS Age
- \* DATA TYPE String
- \* WIDTH 254
- \* PRECISION 0
- \* SCALE 0

[Hide Field Age ▲](#)

FIELD Group ►

- \* ALIAS Group
- \* DATA TYPE String
- \* WIDTH 254
- \* PRECISION 0
- \* SCALE 0

[Hide Field Group ▲](#)

FIELD Informal\_n ►

- \* ALIAS Informal\_n
- \* DATA TYPE String
- \* WIDTH 254
- \* PRECISION 0
- \* SCALE 0

[Hide Field Informal\\_n ▲](#)

FIELD Formation ►

- \* ALIAS Formation
- \* DATA TYPE String
- \* WIDTH 254
- \* PRECISION 0
- \* SCALE 0



[Hide Field Formation ▲](#)

FIELD Member\_or\_ ►

- \* ALIAS Member\_or\_
- \* DATA TYPE String
- \* WIDTH 254
- \* PRECISION 0
- \* SCALE 0

[Hide Field Member\\_or\\_ ▲](#)

FIELD Magnetic\_p ►

- \* ALIAS Magnetic\_p
- \* DATA TYPE String
- \* WIDTH 254
- \* PRECISION 0
- \* SCALE 0

[Hide Field Magnetic\\_p ▲](#)

FIELD Chem\_type ►

- \* ALIAS Chem\_type
- \* DATA TYPE String
- \* WIDTH 254
- \* PRECISION 0
- \* SCALE 0

[Hide Field Chem\\_type ▲](#)

FIELD Modifier ►

- \* ALIAS Modifier
- \* DATA TYPE String
- \* WIDTH 254
- \* PRECISION 0
- \* SCALE 0

[Hide Field Modifier ▲](#)

FIELD Mineral\_mo ►

- \* ALIAS Mineral\_mo
- \* DATA TYPE String
- \* WIDTH 254
- \* PRECISION 0
- \* SCALE 0

[Hide Field Mineral\\_mo ▲](#)

FIELD Lithology ►

- \* ALIAS Lithology
- \* DATA TYPE String
- \* WIDTH 254
- \* PRECISION 0

\* SCALE 0

*Hide Field Lithology ▲*

FIELD Form ►

\* ALIAS Form  
\* DATA TYPE String  
\* WIDTH 254  
\* PRECISION 0  
\* SCALE 0

*Hide Field Form ▲*

FIELD Comments ►

\* ALIAS Comments  
\* DATA TYPE String  
\* WIDTH 254  
\* PRECISION 0  
\* SCALE 0

*Hide Field Comments ▲*

FIELD Lab ►

\* ALIAS Lab  
\* DATA TYPE String  
\* WIDTH 254  
\* PRECISION 0  
\* SCALE 0

*Hide Field Lab ▲*

FIELD Job\_No ►

\* ALIAS Job\_No  
\* DATA TYPE String  
\* WIDTH 254  
\* PRECISION 0  
\* SCALE 0

*Hide Field Job\_No ▲*

FIELD SiO2 ►

\* ALIAS SiO2  
\* DATA TYPE Double  
\* WIDTH 16  
\* PRECISION 15  
\* SCALE 6

*Hide Field SiO2 ▲*

FIELD TiO2 ►

\* ALIAS TiO2  
\* DATA TYPE Double  
\* WIDTH 16

- \* PRECISION 15
- \* SCALE 6

*Hide Field TiO2 ▲*

FIELD Al2O3 ►

- \* ALIAS Al2O3
- \* DATA TYPE Double
- \* WIDTH 16
- \* PRECISION 15
- \* SCALE 6

*Hide Field Al2O3 ▲*

FIELD FeO\_total ►

- \* ALIAS FeO\_total
- \* DATA TYPE Double
- \* WIDTH 16
- \* PRECISION 15
- \* SCALE 6

*Hide Field FeO\_total ▲*

FIELD MnO ►

- \* ALIAS MnO
- \* DATA TYPE Double
- \* WIDTH 16
- \* PRECISION 15
- \* SCALE 6

*Hide Field MnO ▲*

FIELD MgO ►

- \* ALIAS MgO
- \* DATA TYPE Double
- \* WIDTH 16
- \* PRECISION 15
- \* SCALE 6

*Hide Field MgO ▲*

FIELD CaO ►

- \* ALIAS CaO
- \* DATA TYPE Double
- \* WIDTH 16
- \* PRECISION 15
- \* SCALE 6

*Hide Field CaO ▲*

FIELD Na2O ►

- \* ALIAS Na2O
- \* DATA TYPE Double

- \* WIDTH 16
- \* PRECISION 15
- \* SCALE 6

*Hide Field Na2O ▲*

FIELD K2O ►

- \* ALIAS K2O
- \* DATA TYPE Double
- \* WIDTH 16
- \* PRECISION 15
- \* SCALE 6

*Hide Field K2O ▲*

FIELD P2O5 ►

- \* ALIAS P2O5
- \* DATA TYPE Double
- \* WIDTH 16
- \* PRECISION 15
- \* SCALE 6

*Hide Field P2O5 ▲*

FIELD Total ►

- \* ALIAS Total
- \* DATA TYPE Double
- \* WIDTH 16
- \* PRECISION 15
- \* SCALE 6

*Hide Field Total ▲*

FIELD SiO2\_norm ►

- \* ALIAS SiO2\_norm
- \* DATA TYPE Double
- \* WIDTH 16
- \* PRECISION 15
- \* SCALE 6

*Hide Field SiO2\_norm ▲*

FIELD TiO2\_norm ►

- \* ALIAS TiO2\_norm
- \* DATA TYPE Double
- \* WIDTH 16
- \* PRECISION 15
- \* SCALE 6

*Hide Field TiO2\_norm ▲*

FIELD Al2O3\_norm ►

- \* ALIAS Al2O3\_norm

- \* DATA TYPE Double
- \* WIDTH 16
- \* PRECISION 15
- \* SCALE 6

*Hide Field Al2O3\_norm ▲*

FIELD FeO\_total\_ ►

- \* ALIAS FeO\_total\_
- \* DATA TYPE Double
- \* WIDTH 16
- \* PRECISION 15
- \* SCALE 6

*Hide Field FeO\_total\_ ▲*

FIELD MnO\_norm ►

- \* ALIAS MnO\_norm
- \* DATA TYPE Double
- \* WIDTH 16
- \* PRECISION 15
- \* SCALE 6

*Hide Field MnO\_norm ▲*

FIELD MgO\_norm ►

- \* ALIAS MgO\_norm
- \* DATA TYPE Double
- \* WIDTH 16
- \* PRECISION 15
- \* SCALE 6

*Hide Field MgO\_norm ▲*

FIELD CaO\_norm ►

- \* ALIAS CaO\_norm
- \* DATA TYPE Double
- \* WIDTH 16
- \* PRECISION 15
- \* SCALE 6

*Hide Field CaO\_norm ▲*

FIELD Na2O\_norm ►

- \* ALIAS Na2O\_norm
- \* DATA TYPE Double
- \* WIDTH 16
- \* PRECISION 15
- \* SCALE 6

*Hide Field Na2O\_norm ▲*

FIELD K2O\_norm ►

- \* ALIAS K2O\_norm
- \* DATA TYPE Double
- \* WIDTH 16
- \* PRECISION 15
- \* SCALE 6

*Hide Field K2O\_norm ▲*

FIELD P2O5\_norm ►

- \* ALIAS P2O5\_norm
- \* DATA TYPE Double
- \* WIDTH 16
- \* PRECISION 15
- \* SCALE 6

*Hide Field P2O5\_norm ▲*

FIELD Ni\_XRF ►

- \* ALIAS Ni\_XRF
- \* DATA TYPE Double
- \* WIDTH 16
- \* PRECISION 15
- \* SCALE 6

*Hide Field Ni\_XRF ▲*

FIELD Cr\_XRF ►

- \* ALIAS Cr\_XRF
- \* DATA TYPE Double
- \* WIDTH 16
- \* PRECISION 15
- \* SCALE 6

*Hide Field Cr\_XRF ▲*

FIELD Sc\_XRF ►

- \* ALIAS Sc\_XRF
- \* DATA TYPE Double
- \* WIDTH 16
- \* PRECISION 15
- \* SCALE 6

*Hide Field Sc\_XRF ▲*

FIELD V\_XRF ►

- \* ALIAS V\_XRF
- \* DATA TYPE Double
- \* WIDTH 16
- \* PRECISION 15
- \* SCALE 6

*Hide Field V\_XRF ▲*

## FIELD Ba\_XRF ►

- \* ALIAS Ba\_XRF
- \* DATA TYPE Double
- \* WIDTH 16
- \* PRECISION 15
- \* SCALE 6

*Hide Field Ba\_XRF ▲*

## FIELD Rb\_XRF ►

- \* ALIAS Rb\_XRF
- \* DATA TYPE Double
- \* WIDTH 16
- \* PRECISION 15
- \* SCALE 6

*Hide Field Rb\_XRF ▲*

## FIELD Sr\_XRF ►

- \* ALIAS Sr\_XRF
- \* DATA TYPE Double
- \* WIDTH 16
- \* PRECISION 15
- \* SCALE 6

*Hide Field Sr\_XRF ▲*

## FIELD Zr\_XRF ►

- \* ALIAS Zr\_XRF
- \* DATA TYPE Double
- \* WIDTH 16
- \* PRECISION 15
- \* SCALE 6

*Hide Field Zr\_XRF ▲*

## FIELD Y\_XRF ►

- \* ALIAS Y\_XRF
- \* DATA TYPE Double
- \* WIDTH 16
- \* PRECISION 15
- \* SCALE 6

*Hide Field Y\_XRF ▲*

## FIELD Nb\_XRF ►

- \* ALIAS Nb\_XRF
- \* DATA TYPE Double
- \* WIDTH 16
- \* PRECISION 15
- \* SCALE 6

*Hide Field Nb\_XRF ▲*

## FIELD Ga\_XRF ►

- \* ALIAS Ga\_XRF
- \* DATA TYPE Double
- \* WIDTH 16
- \* PRECISION 15
- \* SCALE 6

*Hide Field Ga\_XRF ▲*

## FIELD Cu\_XRF ►

- \* ALIAS Cu\_XRF
- \* DATA TYPE Double
- \* WIDTH 16
- \* PRECISION 15
- \* SCALE 6

*Hide Field Cu\_XRF ▲*

## FIELD Zn\_XRF ►

- \* ALIAS Zn\_XRF
- \* DATA TYPE Double
- \* WIDTH 16
- \* PRECISION 15
- \* SCALE 6

*Hide Field Zn\_XRF ▲*

## FIELD Pb\_XRF ►

- \* ALIAS Pb\_XRF
- \* DATA TYPE Double
- \* WIDTH 16
- \* PRECISION 15
- \* SCALE 6

*Hide Field Pb\_XRF ▲*

## FIELD La\_XRF ►

- \* ALIAS La\_XRF
- \* DATA TYPE Double
- \* WIDTH 16
- \* PRECISION 15
- \* SCALE 6

*Hide Field La\_XRF ▲*

## FIELD Ce\_XRF ►

- \* ALIAS Ce\_XRF
- \* DATA TYPE Double
- \* WIDTH 16
- \* PRECISION 15
- \* SCALE 6

*Hide Field Ce\_XRF ▲*



## FIELD Th\_XRF ▶

- \* ALIAS Th\_XRF
- \* DATA TYPE Double
- \* WIDTH 16
- \* PRECISION 15
- \* SCALE 6

*Hide Field Th\_XRF ▲*

## FIELD Nd\_XRF ▶

- \* ALIAS Nd\_XRF
- \* DATA TYPE Double
- \* WIDTH 16
- \* PRECISION 15
- \* SCALE 6

*Hide Field Nd\_XRF ▲*

## FIELD U\_XRF ▶

- \* ALIAS U\_XRF
- \* DATA TYPE Double
- \* WIDTH 16
- \* PRECISION 15
- \* SCALE 6

*Hide Field U\_XRF ▲*

*Hide Details for object DAD-12 ▲*

*Hide Fields ▲*

## Metadata Details ▶

\* METADATA LANGUAGE English (UNITED STATES)  
 METADATA CHARACTER SET utf8 - 8 bit UCS Transfer Format

SCOPE OF THE DATA DESCRIBED BY THE METADATA dataset  
 SCOPE NAME \*dataset

LAST UPDATE 2016-03-29

### ARCGIS METADATA PROPERTIES

METADATA FORMAT ArcGIS 1.0  
 METADATA STYLE FGDC CSDGM Metadata  
 STANDARD OR PROFILE USED TO EDIT METADATA FGDC

CREATED IN ARCGIS FOR THE ITEM 2016-04-26 08:08:25  
 LAST MODIFIED IN ARCGIS FOR THE ITEM 2017-08-09 10:49:17

### AUTOMATIC UPDATES

HAVE BEEN PERFORMED Yes  
 LAST UPDATE 2017-08-09 10:48:45

[Hide Metadata Details ▲](#)

## Metadata Contacts ►

### METADATA CONTACT

INDIVIDUAL'S NAME Dennis M. Feeney

ORGANIZATION'S NAME Idaho Geological Survey

CONTACT'S ROLE originator

### CONTACT INFORMATION ►

#### PHONE

VOICE 208-885-7991

#### ADDRESS

TYPE postal

DELIVERY POINT 875 Perimeter Dr. MS 3014

CITY Moscow

ADMINISTRATIVE AREA Idaho

POSTAL CODE 83844-3014

COUNTRY US

E-MAIL ADDRESS [igs@uidaho.edu](mailto:igs@uidaho.edu)

[Hide Contact information ▲](#)

[Hide Metadata Contacts ▲](#)

## Thumbnail and Enclosures ►

### THUMBNAIL

THUMBNAIL TYPE JPG

[Hide Thumbnail and Enclosures ▲](#)

## FGDC Metadata (read-only) ▼