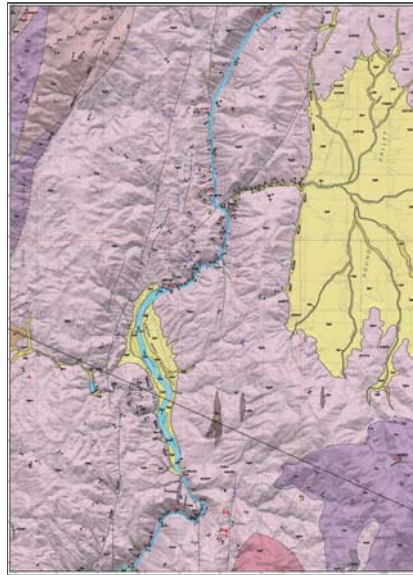


Geologic Map of the Smiths Ferry Quadrangle, Keegan L. Schmidt, David E. Stewart, Reed S. Lewis, and William M. Phillips, 2017, Idaho Geological Survey Digital Web Map 181 (DWM-181), GIS Dataset.



Tags

Smiths Ferry Quadrangle, Idaho; Payette River; Valley County, Idaho; Cretaceous Idaho batholith.

Summary

Digital geologic map data (GIS database) of the Geologic Map of the Smiths Ferry Quadrangle, Valley County, Idaho, 2017, Idaho Geological Survey Digital Web Map 181 (DWM-181),

Description

These data include original field work and compiled existing geologic map data at 1:24,000. Data source is the IGS publication DWM-181, Geologic Map of the Smiths Ferry Quadrangle, Valley County, Idaho, 2017. This Personal Geodatabase (and File Geodatabase) is approximately compliant with the draft standard for publication of digital geologic maps (NCGMP09). All Feature Classes can be linked to the DataSources table via DataSourcesID field/attribute to determine the geologic source for the data. Feature Classes:

CartographicLines--Line decorations for various polyline feature classes, e.g., ball and bar for normal faults

ContactsAndFaults--Geologic map unit boundaries and ALL faults included. This includes dangler fault lines. Use the "type" field to classify or to link to the Glossary.

Geologic Points--Geologic Point features showing located geologic (point) objects, e.g., fault breccia, non-oriented structure symbols. Use the "Type" field to classify by type and to link to Glossary if desired.

Orientations Points--Orientation Point data. For example, strike and dip and foliations measurements. Intended for non-site-specific investigations. Use the "type" field to classify or to link to the Glossary.

GeologicLines--Polylines depicting geologic mapped features, e.g., landslide headwall scarps, terrace scarps, or avalanche trace.

MapUnitPolys--Geologic map unit polygons. These are the main feature of this dataset. Descriptions for these units can be found in the DescriptionOfMapUnits feature class/table.

Credits

Science: Keegan L. Schmidt, David E. Stewart, Reed S. Lewis, and William M. Phillips
 GIS: Jane S. Freed, Loudon R. Stanford, and Linda Tedrow

Use limitations

Geologicmap data intendedfor non-site-specific use. Thesedata were compiledfrom 1:24,000 geologicmapping and shouldnot beused atlarger scales, e.g., 1:12,000. Use the DataSource table and the DataSourceID in each FeatureClass (but especially the ContactsAndFaults FeatureClass/Layer) to determine original intended scale. The Idaho Geological Survey does not guarantee this map or digital data to be free of errors nor assume liability for interpretations made from this map or digital data, or decisions based thereon.

Extent

West -116.1248 **East** -116
North 44.3748 **South** 44.2583

Scale Range

Maximum (zoomed in) 1:5,000
Minimum (zoomed out) 1:150,000,000

ArcGIS Metadata ►

Citation ►

TITLE Geologic Map of the Smiths Ferry Quadrangle, Keegan L. Schmidt, David E. Stewart, Reed S. Lewis, and William M. Phillips, 2017, Idaho Geological Survey Digital Web Map 181 (DWM-181), GIS Dataset.

SERIES

NAME IGS Digital Web Map
ISSUE 181

Hide Citation ▲

Resource Details ►

DATASET CHARACTER SET utf8 - 8 bit UCS Transfer Format

STATUS completed

SPATIAL REPRESENTATION TYPE vector

SPATIAL RESOLUTION

DATASET'S SCALE
SCALE DENOMINATOR 24000

CREDITS

Science: Keegan L. Schmidt, David E. Stewart, Reed S. Lewis, and William M. Phillips
 GIS: Jane S. Freed, Loudon R. Stanford, and Linda Tedrow

ARCGIS ITEM PROPERTIES

* LOCATION file:///\\igs-rift\shared\DATABASE_MAPS\24K\SmithsFerryArea\Smiths_Ferry\GIS_NCGMP09\SmithsFerry_DWM-181\SmithsFerry_DWM-181-IGS.mdb
 * ACCESS PROTOCOL Local Area Network

[Hide Resource Details ▲](#)

Extents ►

EXTENT

GEOGRAPHIC EXTENT

BOUNDING RECTANGLE

EXTENT TYPE Extent used for searching
 WEST LONGITUDE -116.1248
 EAST LONGITUDE -116
 NORTH LATITUDE 44.3748
 SOUTH LATITUDE 44.2583
 EXTENT CONTAINS THE RESOURCE Yes

[Hide Extents ▲](#)

Resource Maintenance ►

RESOURCE MAINTENANCE

UPDATE FREQUENCY as needed

[Hide Resource Maintenance ▲](#)

Resource Constraints ►

CONSTRAINTS

LIMITATIONS OF USE

Geologicmap data intendedfor non-site-specific use. Thesedata were compiledfrom 1:24,000 geologicmapping and shouldnot beused atlarger scales,e.g.,1:12,000. Use the DataSource table and the DataSourceID in each FeatureClass (but especially the ContactsAndFaults FeatureClass/Layer) to determine original intended scale. The Idaho Geological Survey does not guarantee this map or digital data to be free of errors nor assume liability for interpretations made from this map or digital data, or decisions based thereon.

[Hide Resource Constraints ▲](#)

Geoprocessing history ►

PROCESS

PROCESS NAME Copy

DATE 2018-02-26 14:22:16

TOOL LOCATION c:\program files (x86)\arcgis\desktop10.3\ArcToolbox\Toolboxes\Data Management Tools.tbx\Copy

COMMAND ISSUED

Copy

W:\DATABASE_MAPS\24K\SmithsFerryArea\Smiths_Ferry\database\SmithsFerryGeolmdb.mdb

W:\DATABASE_MAPS\24K\SmithsFerryArea\Smiths_Ferry\GIS_NCGMP09\SmithsFerry_DWM-181-IGS.mdb Workspace

INCLUDE IN LINEAGE WHEN EXPORTING METADATA No

[Hide Geoprocessing history ▲](#)

Metadata Details ►

METADATA CHARACTER SET utf8 - 8 bit UCS Transfer Format

SCOPE OF THE DATA DESCRIBED BY THE METADATA dataset

LAST UPDATE 2018-02-13

ARCGIS METADATA PROPERTIES

METADATA FORMAT ArcGIS 1.0

METADATA STYLE FGDC CSDGM Metadata

STANDARD OR PROFILE USED TO EDIT METADATA FGDC

CREATED IN ARCGIS FOR THE ITEM 2018-02-26 14:22:15

LAST MODIFIED IN ARCGIS FOR THE ITEM 2018-02-12 10:30:07

AUTOMATIC UPDATES

HAVE BEEN PERFORMED No

ITEM LOCATION HISTORY

ITEM COPIED OR MOVED 2018-02-26 14:52:40

FROM W:\DATABASE_MAPS\24K\SmithsFerryArea\Smiths_Ferry\GIS_NCGMP09
\SmithsFerry_DWM-181-IGS.mdb

TO \\igs-rift\shared\DATABASE_MAPS\24K\SmithsFerryArea\Smiths_Ferry\GIS_NCGMP09
\SmithsFerry_DWM-181\SmithsFerry_DWM-181-IGS.mdb

[Hide Metadata Details ▲](#)

Thumbnail and Enclosures ►

THUMBNAIL

THUMBNAIL TYPE JPG

[Hide Thumbnail and Enclosures ▲](#)