

# IDAHO MINING AND EXPLORATION, 1992 SUPPLEMENTAL DOCUMENT

Earl H. Bennett  
Virginia S. Gillerman

FINAL REPORT COMPILED AND FORMATTED BY

Jacob A. Eldredge  
Haley L. Nelson  
Christopher A. Tate

*These figures supplement Staff Report S-24-03.  
This document updates and replaces 1992RDp.*

Staff Report 24-03 Suppl.  
April 2024

Idaho Geological Survey  
Morrill Hall, Third Floor  
University of Idaho  
Moscow, Idaho 83844-3014

# IDAHO MINING AND EXPLORATION, 1992 SUPPLEMENTAL DOCUMENT

Earl H. Bennett  
Virginia S. Gillerman

FINAL REPORT COMPILED AND FORMATTED BY

Jacob A. Eldredge  
Haley L. Nelson  
Christopher A. Tate

*This staff report consists of previously  
unpublished or limited release material.  
**These figures supplement Staff Report S-24-03.  
This document updates and replaces 1992RDp.***

*Staff Reports present timely information for  
public distribution. This publication may not  
conform to the agency's standards.*

Staff Report 24-03 Suppl.  
April 2024

Idaho Geological Survey  
Morrill Hall, Third Floor  
University of Idaho  
Moscow, Idaho 83844-3014

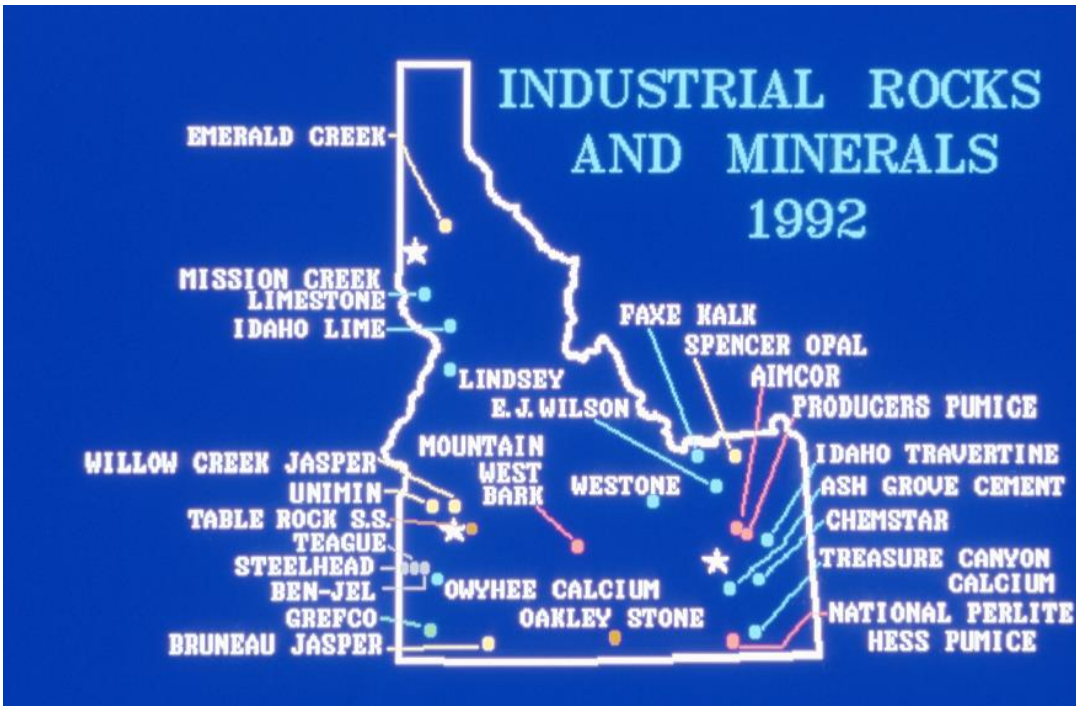
## TABLE OF FIGURES

Slide 1. Title.....	1
Slide 2. Industrial rocks and minerals 1992.....	1
Slide 3. Active metal mines 1992. ....	2
Slide 4. Total non-fuel mineral production in Idaho. ....	2
Slide 5. Values of Minerals. ....	3
Slide 6. Miners.....	3
Slide 7. Idaho Statesman headline, 9/27/1992. Idaho Conservation League golf course claims. ..	4
Slide 8. Black Pine Mine, Pegasus, Ginna and Mr. Lloyd with 277 oz, 80% gold ore .....	4
Slide 9. Jack Lyman gives \$10K check to Idaho Conservation League .....	5
Slide 10. Idaho Statesman headline, 9/27/1992. Idaho Conservation League golf course claims.	5
Slide 11. Atlas-Newmont transition team. 6/1996 .....	6
Slide 12. Black Pine Mine, Pegasus, Ginna and Mr. Lloyd with 277 oz 80% gold ore .....	6
Slide 13. Placer Dome drilling at Kilgore.....	7
Slide 14. Idaho Almaden Hg mine.....	7
Slide 15. Atlas drilling at Musgrove Creek on Johnny’s Point. ....	8
Slide 16. Earl and bob Bartlett at Teague Minerals (zeolites). ....	8
Slide 16. Noranda Blackbird.....	9
Slide 18. Drill roads at Hecla’s Grouse Creek. ....	9
Slide 19. BLM drilling at Unimin silica at Emmett.....	10
Slide 20. Emerald Creek Garnet washing plant.....	10
Slide 21. Ash Grove Cement, Inkom, ID.....	11
Slide 22. Idaho Travertine, Idaho Falls, gang saw. ....	11
Slide 23. Eldon Modrow splitting core at Hecla-Barrick JV at Stibnite.....	12
Slide 24. Cyprus Thompson Creek. ....	12
Slide 25. Rhone Poulenc loadout. Rasmussen Ridge in background. ....	13
Slide 26. Conveyor at ChemStar Lime, Bancroft. ....	13
Slide 27. ChemStar Lime, vertical Maerz kiln. ....	14
Slide 28. DeLamar mine, 7/1992. ....	14
Slide 29. Yellowjacket Mine, 1990, Tobacco Root field trip.....	15
Slide 30. Idaho Gold Corp, Champagne Mine.....	15
Slide 31. Midnite Pit, Stibnite Mines, Inc.....	16

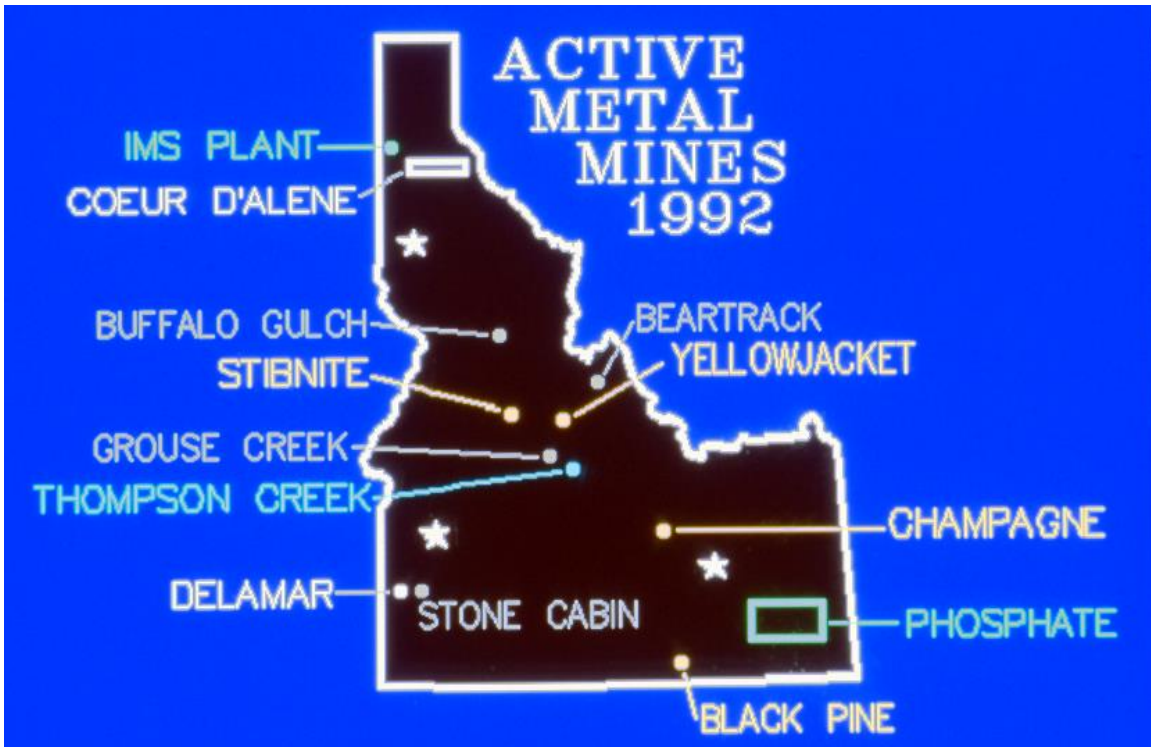
Slide 32. Yellowpine pit area, reclamation. ....	16
Slide 33. New Rescue Mine vein, Jim Striker, Warren, ID, 1992.....	17
Slide 34. Nu-West plant at Conda.....	17
Slide 35. Conda Partnership, Mountain Fuels lease. ....	18
Slide 36. Kerr Magee Plant, Soda Springs.....	18
Slide 37. Monsanto elemental phos plant, Soda Springs.....	19
Slide 38. Monsanto, Enoch Valley mine.....	19
Slide 39. Simplot, Smoky Canyon.....	20
Slide 40. FMC elemental phos plant, Pocatello.....	20
Slide 41. FMC Dry Valley mine, Pit A area.....	21
Slide 42. J. R. Simplot, Don fertilizer plant, Pocatello, ID.....	21

# MINES AND EXPLORATION IDAHO 1992

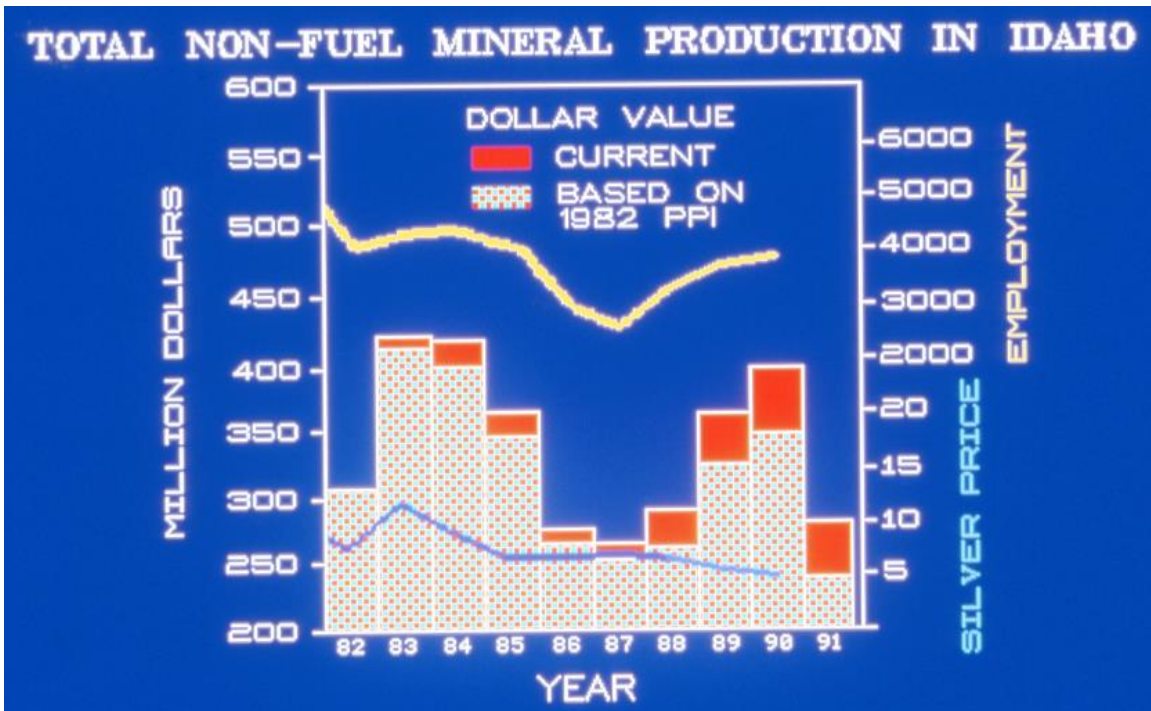
Slide 1. Title.



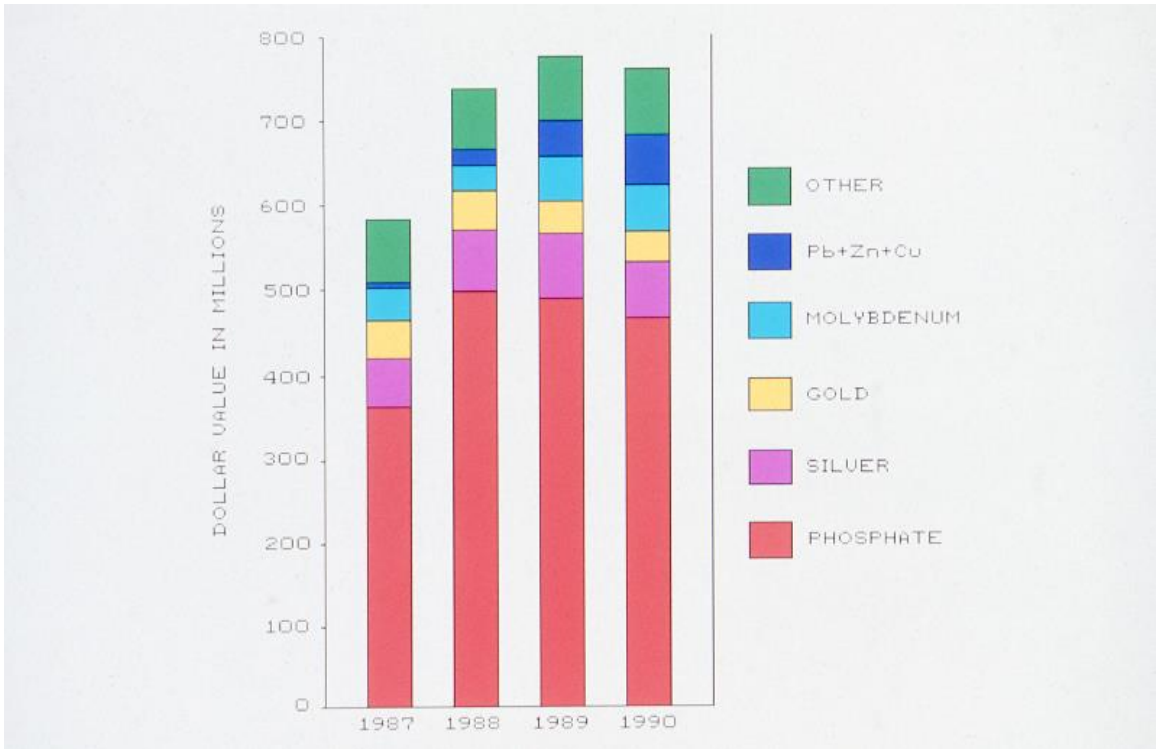
Slide 2. Industrial rocks and minerals 1992.



Slide 3. Active metal mines 1992.



Slide 4. Total non-fuel mineral production in Idaho.



Slide 5. Values of Minerals.



Slide 6. Miners.

# Miners aim to trench Sun Valley

to explore on ski resort Elkhorn golf course need to show how 1872 g law can be misused.

By Drew Garber  
The Idaho Statesman

fers at Elkhorn Resort and on Bald Mountain could new hazards to avoid g excavations. Mining company hopes to exploratory excavation on Elkhorn Resort golf course if the ski area on Bald Mountain.

Idaho Conservation League will file incorporation for Mine-All Mining Co. company will stake out its Sept. 26, said Mike Medberry, spokesman for the

all the legal form it "we need to go o those and do some Medberry said some color, we'll ig." purpose of the s to demonstr

ment. Although the Sun Valley Co. manages the ski area, the Forest Service owns the land.

Medberry also wants the owners to lobby for mineral rights to be withdrawn from public lands in the Wood River Valley, so mining can't take place there.

Jack Lyman, executive director of the Idaho Mining Association, said his group supports mining law reform, but not the kind ICL has in mind. "They want to scrap the mining law," he said, and find a way to stop all mining in Idaho.

Medberry said Mine-All won't be dissuaded from staking out its claim and plans to pound metal stakes into the golf course and on Bald Mountain.

It can do so because mineral rights on the now private property were reserved by the federal government, Medberry said.

**MINING RIGHTS**  
**Group will pay ICL if**

By Jason Montiel  
The Idaho Statesman

A mining inter-

ENVIRONMENT / BUSINESS



Troy Mahan/The Idaho Statesman

Mike Medberry, public lands director for the Idaho Conservation League, jokes with Jack Lyman, executive director of the Idaho Mining Association, about a \$10,000 check the association was ready to give the ICL if the conservation group obtained legal rights to mine two sites in the Sun Valley

area within a year. The league announced during a press conference Saturday in downtown Ketchikan that it was turning over its mining rights to the owners of Elkhorn Resort and Bald Mountain. Medberry joked that he would still take the money even though the challenge is moot.

## ICL won't mine golf course

...ion group that ICL members had staked claims last week near the golf course and on the Bald Mountain. "They're a pain in the butt."

Slide 7. Idaho Statesman headline, 9/27/1992. Idaho Conservation League golf course claims.



Slide 8. Black Pine Mine, Pegasus, Ginna and Mr. Lloyd with 277 oz, 80% gold ore worth \$81,000.



Slide 9. Jack Lyman gives \$10K check to Idaho Conservation League to start closure on Elkhorn golf course.



Slide 10. Idaho Statesman headline, 9/27/1992. Idaho Conservation League golf course claims.



Slide 11. Atlas-Newmont transition team. 6/1996  
Ken Brank, Dan Maus, Dick Kermerer, Tom Rennabaum, Odré Christiansen.



Slide 12. Black Pine Mine, Pegasus, Ginna and Mr. Lloyd with 277 oz 80% gold ore  
worth \$81,000



Slide 13. Placer Dome drilling at Kilgore.



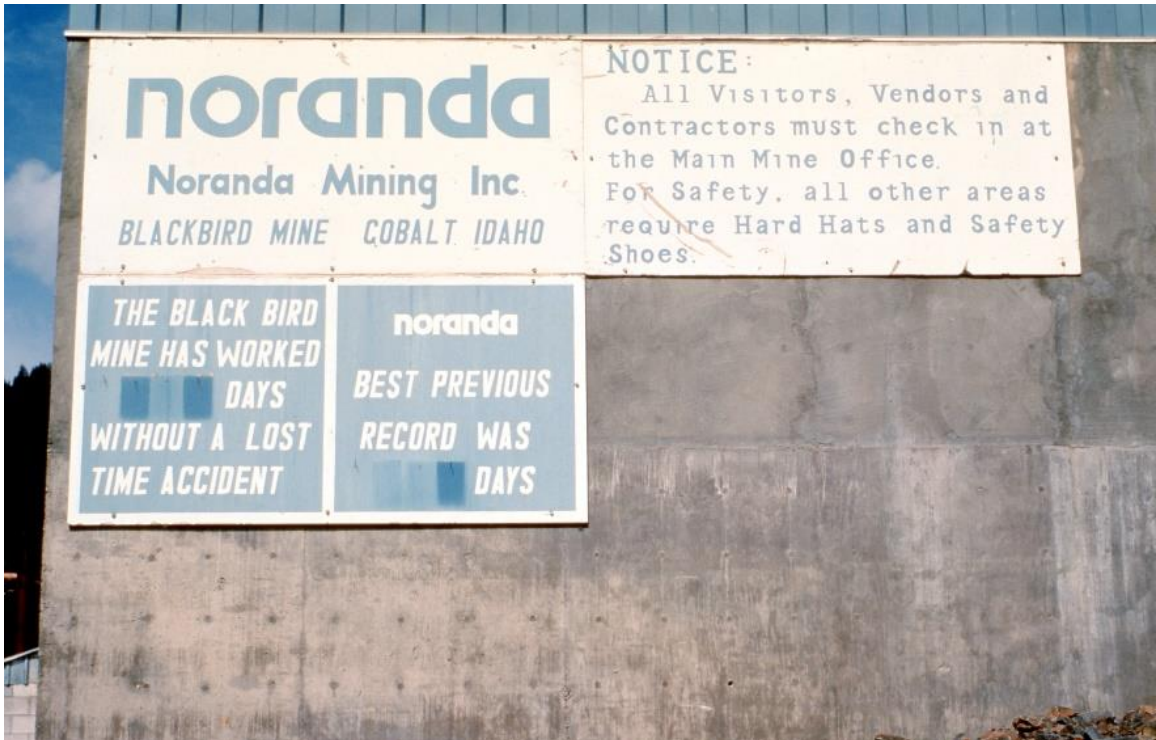
Slide 14. Idaho Almaden Hg mine.



Slide 15. Atlas drilling at Musgrove Creek on Johnny's Point.



Slide 16. Earl and bob Bartlett at Teague Minerals (zeolites).



Slide 16. Noranda Blackbird.



Slide 18. Drill roads at Hecla's Grouse Creek.



Slide 19. BLM drilling at Unimin silica at Emmett.



Slide 20. Emerald Creek Garnet washing plant.



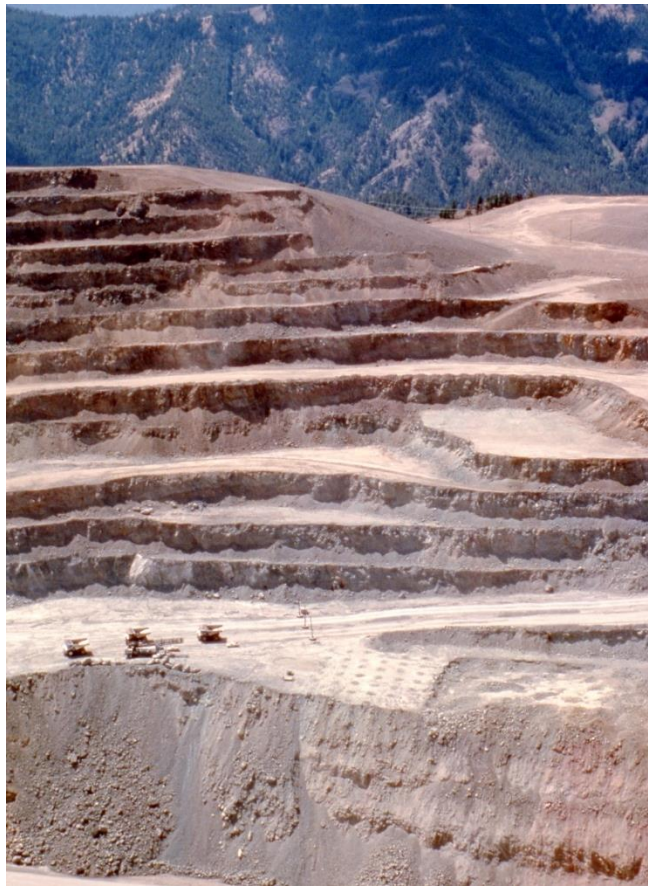
Slide 21. Ash Grove Cement, Inkom, ID.



Slide 22. Idaho Travertine, Idaho Falls, gang saw.



Slide 23. Eldon Modrow splitting core at Hecla-Barrick JV at Stibnite.



Slide 24. Cyprus Thompson Creek.



Slide 25. Rhone Poulenc loadout. Rasmussen Ridge in background.



Slide 26. Conveyor at ChemStar Lime, Bancroft.



Slide 27. ChemStar Lime, vertical Maerz kiln.



Slide 28. DeLamar mine, 7/1992.



Slide 29. Yellowjacket Mine, 1990, Tobacco Root field trip.



Slide 30. Idaho Gold Corp, Champagne Mine.



Slide 31. Midnite Pit, Stibnite Mines, Inc.



Slide 32. Yellowpine pit area, reclamation.



Slide 33. New Rescue Mine vein, Jim Striker, Warren, ID, 1992.



Slide 34. Nu-West plant at Conda.



Slide 35. Conda Partnership, Mountain Fuels lease.



Slide 36. Kerr Magee Plant, Soda Springs.



Slide 37. Monsanto elemental phos plant, Soda Springs.



Slide 38. Monsanto, Enoch Valley mine.



Slide 39. Simplot, Smoky Canyon.



Slide 40. FMC elemental phos plant, Pocatello.



Slide 41. FMC Dry Valley mine, Pit A area.



Slide 42. J. R. Simplot, Don fertilizer plant, Pocatello, ID.

*No speaker's notes are available for this year's presentation.*