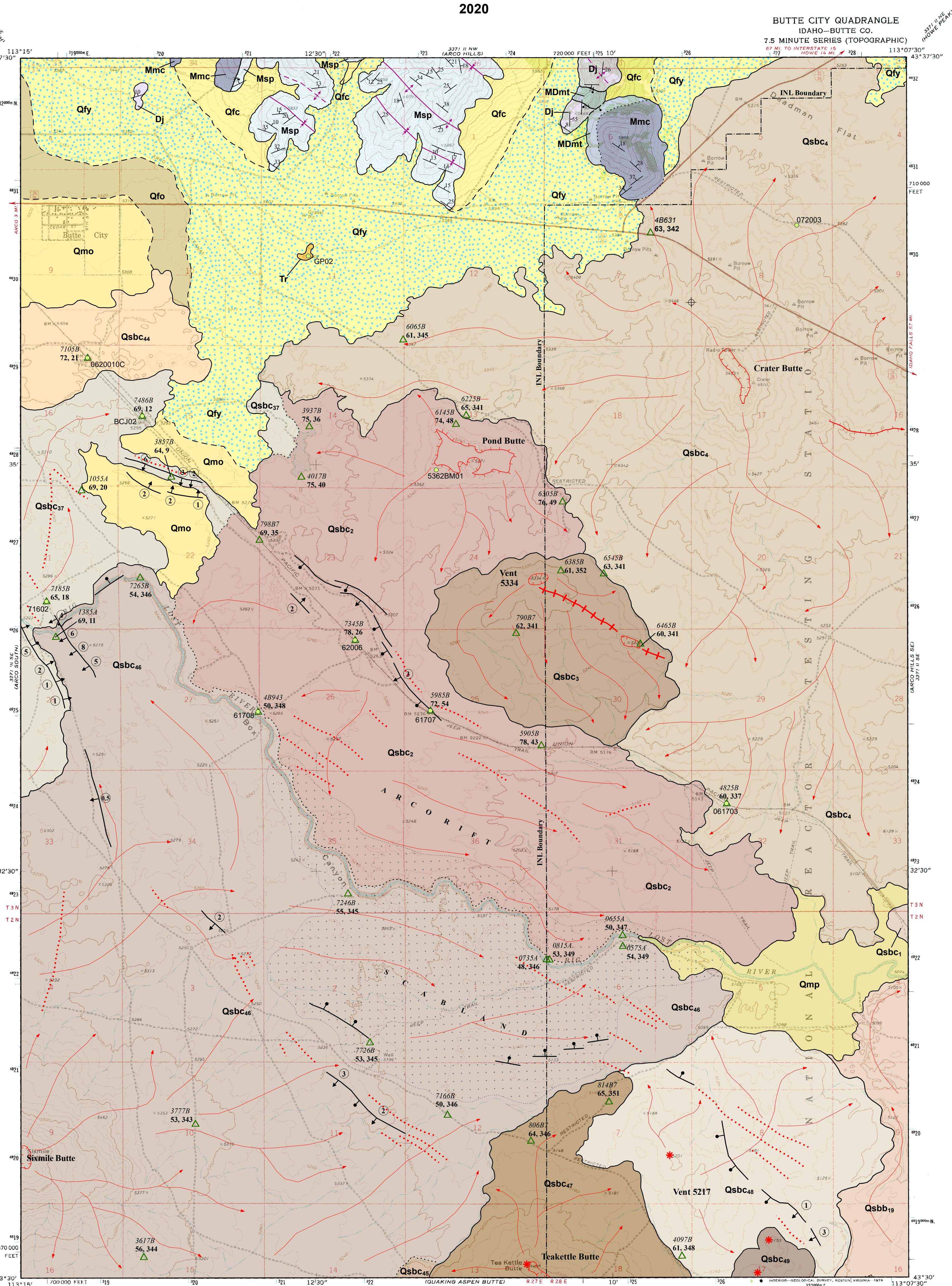


# Geologic Map of the Butte City 7.5' Quadrangle, Butte County, Idaho

by  
Samuel L. Helmuth<sup>1</sup>, Evan J. Martin<sup>1</sup>, Mary K.V. Hodges<sup>2</sup>, and Duane E. Champion<sup>3</sup>

<sup>1</sup>National Association of Geoscience Teachers/U.S. Geological Survey Intern, INL Project Office, Idaho Falls, Idaho  
<sup>2</sup>U.S. Geological Survey, INL Project Office, Idaho Falls, Idaho  
<sup>3</sup>U.S. Geological Survey, Volcano Hazards Program, Alaska Volcano Center, Menlo Park, California

2020



**Base Map Credit:**  
Base digitally scanned from 24,000-scale USGS film separates, 1997.  
Topography by photogrammetric methods from aerial photographs taken 1971. Field checked 1972.  
Projection and 10,000-foot grid ticks: Idaho coordinate system, central zone (Transverse Mercator).  
100-meter Universal Transverse Mercator grid ticks, zone 12, shown in blue. 1927 North American datum.

CONTOUR INTERVAL 20 FEET  
DOTTED LINES REPRESENT 100-FOOT CONTOURS  
NATIONAL GEODETIC DATUM OF 1929  
1792  
AMG 3311 IS DW-SKEWED 7890

**BUTTE CITY, IDAHO**  
N4330-11307 5/7.5  
1972

This Technical Report is a reproduction of independent geologic mapping from non-data Geologic Survey personnel. Its content, quality, and format does not conform to U.S. Geological Survey standards. This preliminary geologic map is published by the IGS to further future scientific studies.

