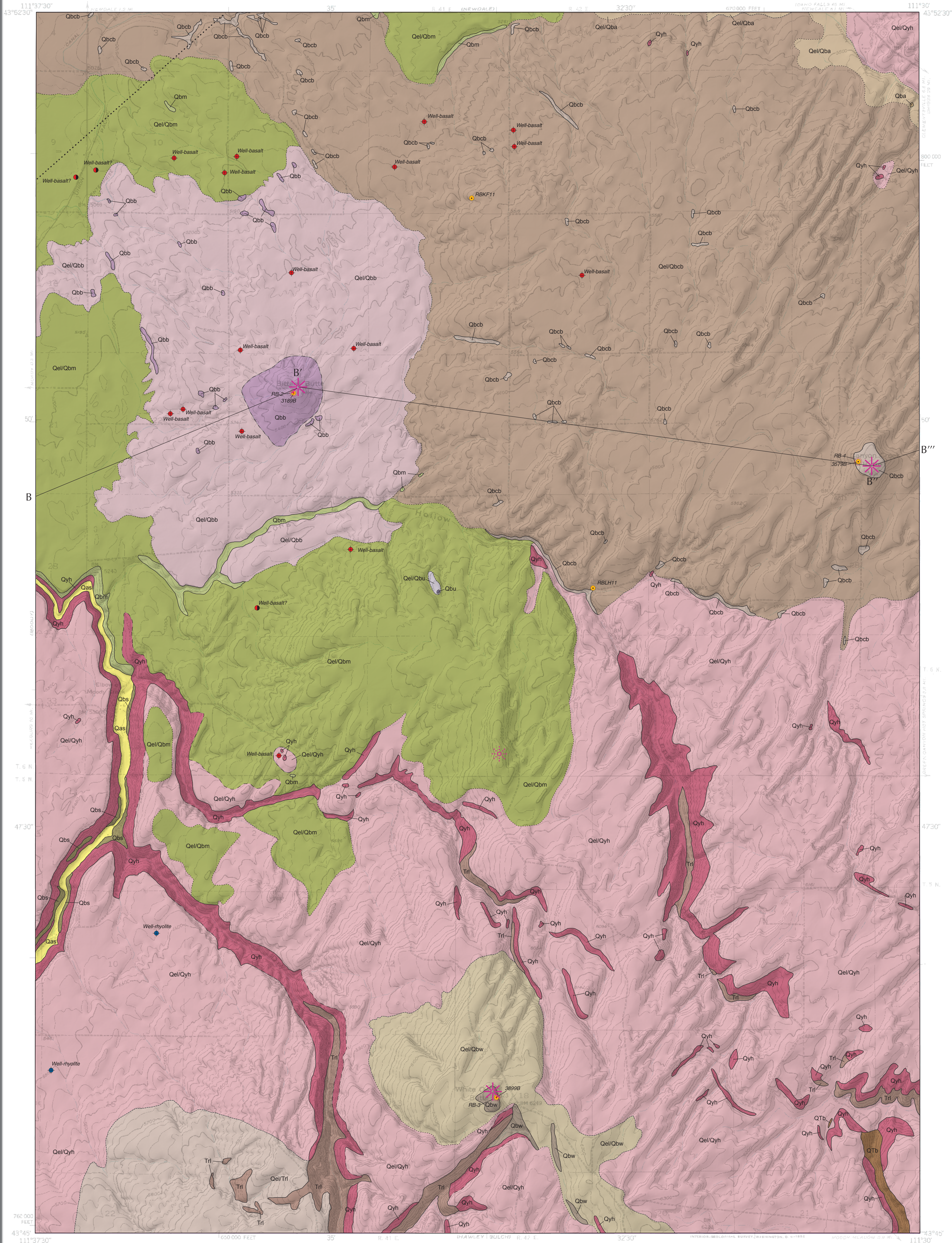


GEOLOGIC MAP OF THE WHITE OWL QUADRANGLE, MADISON COUNTY, IDAHO

Glenn F. Embree¹, Daniel K. Moore¹, William M. Phillips², and Harold J. Prostka³

2016

This Technical Report is a reproduction of independent mapping. Its content, quality, and format may not conform to IGS standards.



SYMBOLS

- Contact: dashed where approximately located; dotted where concealed.
- Normal fault: dotted where concealed.
- Vent.
- Concealed vent.
- Geochemistry sample site.
- Paleomagnetic sample site.
- Well-basalt: Water well showing lithology encountered below loess based on drillers log. Well is approximately located.
- Well-basalt inferred: Water well showing lithology encountered below loess based on drillers log. Well is approximately located.
- Well-rhyolite: Water well showing lithology encountered below loess based on drillers log. Well is approximately located.
- Well-rhyolite inferred: Water well showing lithology encountered below loess based on drillers log. Well is approximately located.

EXPLANATION

See booklet for further details.

ALLUVIAL UNITS

- Qas Alluvium of Moody Creek and unnamed side streams (Holocene).

EOLIAN UNITS

- Qel Loess (late Pleistocene).

VOLCANIC ROCKS

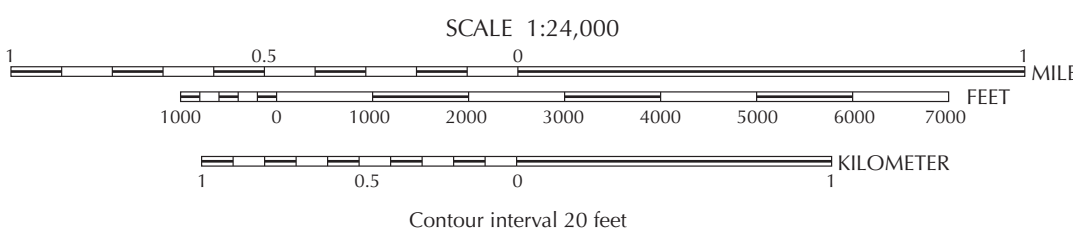
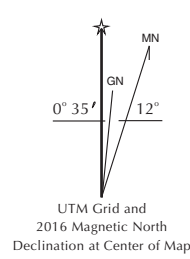
Basalts

- Basalt of Ards Farm (early Pleistocene)—Shown as Qel/Qba where concealed by loess.
- Basalt of Canyon Creek Butte (early Pleistocene)—Shown as Qel/Qbcb where concealed by loess.
- Basalt of Bitters Butte (early Pleistocene)—Shown as Qel/Qbb where concealed by loess.
- Basalt of Moody (early Pleistocene)—Shown as Qel/Qbm where concealed by loess.
- Basalt of White Owl Butte (early Pleistocene)—Shown as Qel/Qbw where concealed by loess.
- Basalt of Sommers Butte volcanic rift zone (early Pleistocene)—Shown as Qel/Qbs where concealed by loess.
- Basalt, unnamed and undivided (Pleistocene)—Shown as Qel/Qbu where concealed by loess.
- Basalt, undivided (early Pleistocene-Pliocene).

Rhyolites

- Huckleberry Ridge Tuff (early Pleistocene)—Shown as Qel/Qyh where concealed by loess.
- Rhyolite of Long Hollow (Pliocene)—Shown as Qel/Trl where concealed by loess.
- Heise volcanic field rhyolites (Pliocene-late Miocene)—Cross section only.

Base Map Credit
Shaded elevation from 10 m DEM.
Topography by multiplex methods and by plane-table surveys, 1951. Aerial photographs taken 1946. Field checked 1951.
Projection: Idaho coordinate system, east zone (Transverse Mercator), 1927 North American Datum.
10,000-foot grid ticks based on Idaho coordinate system, east zone.
1000-meter Universal Transverse Mercator grid ticks, zone 12.
Declination from NOAA National Geophysical Data Center.



NE	N	NW
White Owl	White Owl	White Owl
White Owl	White Owl	White Owl
White Owl	White Owl	White Owl

¹Department of Geology, Brigham Young University—Idaho, Rexburg, Idaho 83460-0510.
²Idaho Geological Survey, University of Idaho, Moscow, ID 83844-3014.
³U.S. Geological Survey (deceased).
Field work conducted 1978-2014.
Digital cartography by Jane S. Freed at the Idaho Geological Survey's Digital Mapping Lab.
Map version 4-7-2016.
PDF (Acrobat Reader) map may be viewed online at www.idahogeology.org.

The IGS does not guarantee this map or digital data to be free of errors nor assume liability for interpretations made from this map or digital data, or decisions based thereon.